

93<sup>RD</sup> ANNUAL

# LEEUWENBURGH LANGUS

BULL SALE



TUESDAY, MARCH 18, 2014  
1:00 PM - BALOG AUCTION  
LETHBRIDGE, ALBERTA

PLEASE BRING THIS CATALOGUE TO THE SALE

Friends & Fellow Cattlemen

Welcome to our 23<sup>rd</sup> Annual Leeuwenburgh Angus Bull Sale. It just might be the most exciting and rewarding time right now, to be in the cattle industry. The cattle market continues to exceed projections, and the future has never looked more favourable.

Our many, many thanks, to our loyal customers, that continue to support us year after year! The success of our customers is very satisfying, and remains our TOP priority! With that in mind, we are committed more than ever to enhance the profitability of our client's cow/calf operations. We've said it before, but we truly believe that this is the industry's heart beat, and it can never be strong enough. Every decision we make, is with the cowman in mind, who sells pounds for a living, and demands profitable, low maintenance cattle. This years bull crop is very consistent, and has an excellent variety of bulls for your heifers, or for powering up your cowherd.

The feeding program hasn't changed, and we have had many positive comments and feed back regarding this. The bulls are raised on a high roughage ration here at the farm, and are designed to work in a rancher's environment. We do nothing less than our best to breed performance into our cattle, - not to feed it into them! This is the fuel for our breeding program, and since we run our own commercial herd, sell our calves by the pound, just like everyone else, we realize that *efficient cattle* are of utmost importance! Great producing cows equals productive calves, that will produce better margins!

Please feel free to come to our farm to evaluate our bulls and females, ask any questions that you may have, or if it's just visiting you have in mind, we're open to that too!! We look forward to seeing you all!

from all of us at Leeuwenburgh Angus



**BALOG AUCTION SERVICES LTD**

Fellow Cattlemen

The Premier producer has waited a very long time for their turn, but the wait is over! Record prices for all classes of feeders and stockers, and it will only get better as 2014 and 2015 go by! Now the good news! You persevered in the cattle business— it's your turn to reap the benefits. The way to stay in the top echelon of the industry, is to buy the best replacement stock available and that's where Leeuwenburgh's come in. Twenty three years of successful, selective breeding — industry leading sires, combined with one of the most proven, efficient cow herds in the nation, gives you, the purebred and commercial man, the opportunity to pick from the top. The Leeuwenburgh family knows and lives the cattle business. Share in their success and take your herd to the next level. Join us at the Leeuwenburgh's 23<sup>rd</sup> Annual Sale .

Respectfully, Bob Balog

**SALE DAY PHONES**

DENNIS LEEUWENBURGH - 403.308.3003  
JOHNNY LEEUWENBURGH - 403.382.1794  
JACK LEEUWENBURGH - 403.330.6123

BALOG AUCTION  
403.320.1980

LOUIS BALOG - 403.331.0611  
BRAD BALOG - 403.642.7444  
MARK LENZ - 403.330.7600  
ANDY CARROLL - 403.308.9493

WELCOME TO OUR 23<sup>RD</sup> ANNUAL BULL SALE

### SALE DAY PHONES

BALOG AUCTION - 403.320.1980  
 DENNIS LEEUWENBURGH - 403.308.3003  
 JOHNNY LEEUWENBURGH - 403.382.1794  
 JACK LEEUWENBURGH - 403.330.6123

DENNIS



JOHNNY



JACK



### SALE STAFF

#### AUCTIONEER

BOB BALOG

#### RINGMEN

LOUIS BALOG - 403.331.0611

BRAD BALOG - 403.642.7444

MARK LENZ - 403.330.7600

ANDY CARROLL - 403.308.9493

### ALL BULLS ARE FULLY TESTED AND 100% GUARANTEED NO BULLS SOLD PRIOR TO THE SALE!

Everything possible will be done to assure that every bull in this sale will be a breeder. Dr. Mitch Oviatt, (Ranch Docs, Lethbridge) will scrotal measure and physically evaluate every bull. Any animal that has not proven itself **within 6 months** of sale, (**September 30, 2014**) if in healthy condition, may be returned to the seller at the buyer's expense. The seller reserves the privilege of trying for a 6-month period to prove the animal a breeder. The seller at his option may either return the purchase price or replace the animal with another of equal quality in full settlement and satisfaction of all claims. Any complaints regarding any animal in this sale shall be made to the breeder. All complaints must be reported in writing by the buyer to the seller **within 6 months** and any animal returned must be free of disease and in good health.

#### CATALOGUE INFORMATION

All information is up to date as of publication date. Pedigree's and EPD's are supplied by the Canadian Angus Association, and all other information has been supplied by the seller. Information in this catalogue is believed to be accurate, but any errors discovered in the catalogue, will be corrected by announcements, from the auction stand at sale time, and such corrections will take precedence over the printed matter in this document.

#### IN - HERD SEMEN INTEREST

Leeuwenburgh Angus reserves the right to draw semen on any bull sold at the buyer's convenience and our cost.

#### DELIVERY

Assistance will be given in making delivery after the sale.

#### PRESALE LUNCH

Join us for lunch at 11:30 a.m. Sale Day

#### INSURANCE

Available at Balog Auction Services

Maureen- 403-320-1980

We strongly suggest you insure your bull purchases.

#### ACCOMMODATIONS - in Lethbridge, less than a 10 minute drive

Quality Inn & Suites - 403-331-6440

Hampton Inn & Suites - 403-327-1386

Holiday Inn - 403-380-5050

Premier Inn & Suites - 403-380-6677

Comfort Inn - 403-320-6993

Call 403-327-9618 if you need assistance with accommodations.

**BULL SELECTION** is more important now than it has ever been, in order to MAXIMIZE your cowherd's potential. Settling for just any bull, because he is a couple of hundred dollars cheaper, could deprive you of thousands later. Remember, pounds add up! Find the time to evaluate a bull's performance and EPD'S alike and consider if a breeder's program is similar to your ranch environment - your buying a piece of the program!

### HOW MUCH CAN YOU AFFORD TO PAY FOR A TOP BULL?

#### COMMAN FORMULA

Increase in pounds per calf from a top-performance bull

X No. of cows bred to him per year

X No. of years to keep the bull

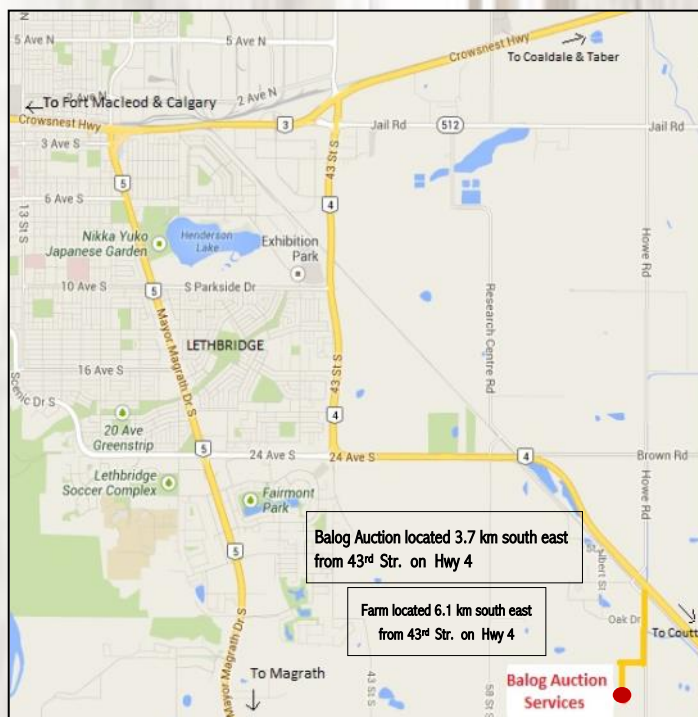
X Expected selling price of calves

= Additional dollars you can pay for a better bull

Example: A bull who will add 30 lbs to the weaning weight of each of his calves mated to 25 cows per year for 4 years and you sell the calves for \$1.50 per pound.

$$30 \times 25 = 750 \times 4 = 3000 \times 1.50 = \$4,500$$

This bull is worth \$4,500 more than the average bull who will keep your weaning weights the same. Take this formula and put your own figures in and see what you can afford to pay. This equation does not consider the increase in value due to calving-ease, higher quality replacement heifers, yearling growth, feedlot gain and improved carcass quality.



## ... IF YOU CAN'T BE HERE!

GIVE US A CALL- DENNIS - 403.308.3003 or JOHNNY - 403.382.1794

The only living we make is mainly with livestock, along with some crop farming, so we understand it is critical to select the right bulls every year. Let us help ahead of the sale in any way. We know our herd and genetics, better than anyone, so questions are welcome. The same person writing this, calves, feeds, shovels you know what, and AI's cows and doesn't visit the farm, but lives on it. Feel confident that if you cannot make the sale, that we can make your bull buying experience a pleasurable one, with a lot less stress and hassle. Call ahead for details, so we can find the right bull and right price range. You will be satisfied. **100% guaranteed** or money back, no questions!!

SALE INFORMATION

View Catalog online at: [www.balogauction.com](http://www.balogauction.com)



## RED MESSMER PACKER S008

IMP 008S ~ 1481359 ~ 2/12/2006 OSF MAF

RED BECTON JULIAN GG B571  
**SIRE: RED MESSMER JOSHUA 019P OSF**  
 RED MESSMER PANDORA M186

RED VGW TOP PICK 130  
**DAM: RED MESSMER MILLIE 124P OSF**  
 RED MESSMER MILLIE 9416

RED BKT JULIAN 7526G  
 RED BKT MARTA 9A13 JL  
 RED LELAND MARIAS 271K  
 RED MESSMER PANDORA 9976  
 RED NEO-SHO MILLENIUM 065G  
 RED VGW KURUBA-RAM 9308  
 RED BUF CRK CHF 824-1658  
 RED NODAKLADY POUNDMAKER

BW	Adj. 205D wt	Adj. 365D wt
88	762	1411

- Carcass quality
- Maternal ability
- Strong balanced EPD's

2014 EPD'S	
BW	-2.9
WW	+69
YW	+111
Milk	+5
TM	+40



Dam of Packer S008



## RED TED CATALYST 107T

TED 107T ~ 1374343 ~ 4/2/2007

RED GLACIER MARIAS 548  
**SIRE: RED GP CATALYST 025**  
 RED BCRA MS DINA 9723

RED LCHMN GOLD ROBBER 1909E  
**DAM: RED TED GOLD ROBBER 23L**  
 RED TED FED'S BO 36J

RED LCC HEAVEN OR BUST 1000B  
 RED GLACIER REBALAS  
 RED LMAN ROBIN HOOD 1174B  
 LEACHMAN DINA 5919  
 RED LMAN KING ROB 8621  
 RED LACHMAN LARKABA 6384  
 RED TED FED'S BO 7G  
 RED TED BUSTER 78G

BW	Adj. 205D wt	205 Index	Adj. 365D wt	365D Index
81	738	116	1380	123

- Our heaviest used sire to date
- Will add volume, depth and length of spine with a smooth shoulder
- Superior calving-ease and growth
- Heaviest weaning sire group, both male & female, 4 years consecutively

2014 EPD'S	
BW	-2.9
WW	+81
YW	+130
Milk	+19
TM	+60

## RED RCR MAX 262Y

RCR 262Y ~ 1628239 ~ 4/24/2011

RED CROWFOOT 6253S  
**SIRE: RED ML MAX 9007W**  
 RED ML JULIAN ANGEL 109L

RED SIX MILE INDEED 808S  
**DAM: RED 999 INDEED 630"823U**  
 RED RED999 SV 823'630S

CROWFOOT MAX 1743L  
 CROWFOOT PIED PIPER 3859N  
 RED BUF CRK JULIAN 4229  
 RED ML ANGEL 23J  
 RED TOWAW INDEED 104H  
 RED SIX MILE FANNY 405P  
 RED SVR COPPERTONE 89P  
 RED 999 RIGHT FORME 823

BW	Adj. 205D wt	205 Index	Adj. 365D wt	365D Index
85	797	119	1346	122

- Use to inject calf vigor
- First calves had moderate birth weights and solid performance
- Maternal pedigree

2014 EPD'S	
BW	+2.6
WW	+66
YW	+106
Milk	+21
TM	+53

## RED LSF CONQUEROR 0026X

IMP 0026X ~ 1659105 ~ 1/6/2010 OSF MAF

RED BECTON JULIAN GG B57  
**SIRE: RED HXC CONQUEST 4405P OSF MAF**  
 RED HXC ELLIE MAY MA638

RED FEDES BIG SKY R9  
**DAM: RED LSF DINA R5000 U8039**  
 RED LSF DINA N3044

RED BKT JULEAN 7526G  
 RED BKT MARTA 9A13 JL  
 RED BFCK CHEROKEE CNYN4912  
 RED HXC 529E  
 RED BIEBER MAKE MIME 7249  
 RED FEDES LAKINA 310  
 RED LCHMN ENTERPRISE 1370H  
 RED LSV DINA J1404

BW	Adj. 205D wt	Adj. 365D wt
66	748	1306

- Calving-ease specialist
- Smooth shouldered, moderate framed progeny
- Excellent EPD profile and performance

2014 EPD'S	
BW	-5.0
WW	+70
YW	+122
Milk	+27
TM	+62



REFERENCE SIRE

## RED LAZY MC CC DETOUR 2W

LDEL 2W ~ 1494226 ~ 1/15/2009 OSF MAF AMF NHF DMF

RED 5L NORSEMAN KING 2291  
**SIRE: RED RMI REDMAN 1T**  
 CROWFOOT KURUBA 4033P

RED RED VGW KING OF THE WEST  
 RED NORSEMAN 1312PJM  
 O C C HUNTER 928H  
 RED CROWFOOT KURUBA 2020M  
 RED SSS BOOMER 803B  
 RED LAURON YB ROSA 11G  
 RED SODAK PRECISION 7408-97  
 RED LAZY MC AM'S BEST 11H

2014 EPD'S	
BW	-4.0
WW	+41
YW	+76
Milk	+23
TM	+43



BW	Adj. 205D wt	205 Index	Adj. 365D wt	365D Index
89	768	107	1297	89

- Stout, thick and moderate framed
- Phenotypically sound
- Will sire beautiful feminine females



Dam of Detour 2W

## RED TED CATALYST 30Y ~ ~ ~ TWO SONS SELL

TED 30Y ~ 1602999 ~ 1/6/2011

~ Lots 61 & 126 ~

RED GP CATALYST 025  
**Sire: RED TED CATALYST 107T**  
 RED TED GOLD ROBBER 23L

RED HOLDEN HI HO 715  
**Dam: RED TED HOLDEN HI HO 52N**  
 RED TED BOOM BOOM 67G



30Y First calves came in 2013 . Lots of vigour and calving ease. Sire had explosive growth traits and femininity. Lots of length and smooth shouldered. Will produce efficient, easy fleshing females.

\*Owned with Count Ridge Angus.

2014 EPD'S	
BW	-3.9
WW	+61
YW	+101
Milk	+17
TM	+48



## RED 6 MILE FULL THROTTLE 171T

SIXM 171T ~ 1386647 ~ 2/19/2007 OSF

RED HEARTLAND KNIGHT CHARM 11L  
**SIRE: RED TER-RON FULLY LOADED 540R**  
 RED TER-RON GOLDIE 240L

RED PASQUIA ARAB 28E  
**DAM: RED SIX MILE WITZEL 360J**  
 RED CY WITZEL 392Z

RED YY RED KNIGHT 640F  
 RED CARRUTHERS TRIBECCA 7F  
 RED LAZY MC DIVIDE 8J  
 RED TER-RON GOLDIE 240J  
 RED GET-A-LONG ARAB 159  
 RED ALMAR SHAWNEE 8A  
 RED SIX MILE CONNECTION 654T  
 RED BAR 3 H WITZEL 80R

2014 EPD'S	
BW	+1.2
WW	+60
YW	+105
Milk	+1
TM	+30



BW	Adj. 205D wt	205 Index	Adj. 365D wt	365D Index
83	870	132	1479	100

-Breed leader for depth and capacity and soft sided cattle



Red Sixmile Witzel 360J

REFERENCE SIRE

5



5

**RED TED BANK STATEMENT 5A**

TED 5A ~ 1726591 ~ 1/3/2013



RED LIC MISSION STATEMENT P27  
**Sire: TNS BANK STATEMENT T272**  
 RED NSFM MISS DYNAMICS M14

RED TED BARNEY 89H  
**Dam: RED TED BARNEY 140K**  
 RED TEX ANGELO RED SILVEIRAS 23F

RED LIC LANCER 806  
 RED LIC HANNAH 106  
 RED BUF CRD DYNAMICS 3820  
 RED NSFM MISS IIMPACT G933  
 RED BUF CRK BARNEY 3474  
 RED TED MISS SHAWTOM 28D  
 RED SILVEIRAS REDFORD  
 RED TED LEADING BOOT LADY 5X

'14 EPD'S

BW -3.6

WW +39

YW +64

Milk+13

TM +33

AOD	BW	WW	205D	ADG	365D	ADG (Lifetime)	MARB	REA	CWT
13	71	847	681	2.97	1295	3.34	+37	+43	+3

**5A** An excellent calving ease bull that ranks 2<sup>nd</sup> in the group with a yearling index of 119. He is packed with volume and capacity. The Ted 140K dam still is one of our best uddered and sound footed cows at 14 years of age. Recommended for heifers with the added value of performance.

6

**RED TED CONQUEROR 6A**

TED 6A ~ 1770817 ~ 1/4/2013



RED HXC CONQUEST 4405P  
**Sire: LSF CONQUEROR 0026X**  
 RED LSF DINA R5000 U8039

BHR GOLDEN BOY 453B  
**Dam: RED TED GOLDEN BOY 119Y**  
 RED TED GLACIER MARIAS 101L

RED BECKTON JULIAN GG B571  
 RED HXC ELLIE MAY MA638  
 RED FEDDES BIG SKY R9  
 RED LSF DINA N3044  
 RED LMB GOLDEN BOY 719  
 RED MISS BHR LOGAN 017  
 RED GLACIER MARIAS 548  
 RED TED LA ROUX DESIGN 2778

'14 EPD'S

BW -7.2

WW +40

YW +68

Milk+22

TM +42

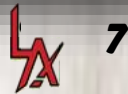
AOD	BW	WW	205D	ADG	365D	ADG (Lifetime)	MARB	REA	CW
2	60	825	711	3.17	1108	2.65	+75	+20	+27



**6A** This Conqueror Son represents sound, calving ease genetics and performance. Check out the 60 lb BW to 711 205D; and the -7.2 BW along with a +22 Milk Epd. He's moderate framed so it looks like the added value in him is that he has the potential to be able to breed heifers for a few years.

RED ANGUS

7



**RED TED WANDER 7A**

TED 7A ~ 1750869 ~ 1/4/2013

RED BUF CRK HOBO 1961  
**Sire: RED GET-A-LONG WANDER 905**  
 RED SSFA JOANNA 93T

RED BUF CRK HOBO 1413  
 BUF CR CARRIE VC1174  
 RED GET-A-LONG GOLD MEDAL 7106  
 RED GET-A-LONG JOANNA 276  
 RED GP CATALYST 025  
 RED TED GOLD ROBBER 23L  
 RED TED GLACIER LOGAN 53K  
 RED TED KING RED 80G

RED TED CATALYST 107T  
**Dam: RED TED CATALYST 72Y**  
 RED TED GLACIER LOGAN 126M

'14 EPD'S
BW -2.3
WW +64
YW +100
Milk +18
TM +50

**7A** A true calving-ease tabulation combined with the performance that you rarely find in a low birth weight bull. WW and YW Epd's in the top 5% of the breed, with a weaning index of 109. The Wander bulls that we have this year have great feet and legs with that extra length. The 72Y Catalyst dam has given us a set of female twins so adding some fertility never hurts.  
**HERDSIRE PROSPECT**

AOD	BW	WW	205D	ADG	365D	ADG (Lifetime)	MARB	REA	CWT
2	70	890	762	3.38	1291	3.16	+0.36	-0.05	+26



**RED GET-A-LONG WANDER 905**

GAL 5W ~ 1529124 ~ 1/25/2009 OSF MAF AMF NHF

RED BIR HOBO 800  
 RED BUF CRK HOBO 1413  
 RED LANA 3140-302  
**SIRE: RED BUF CRK HOBO 1961**  
 BUF CRK TOMAHAWK 529  
 RED CR CARRIE VC1174  
 BFLO CRK CARIE VC473

RED ROYAL BRAVEHEART  
 RED GET-A-LONG GOLD MEDAL 7106  
 RED GET-A-LONG SOAPY 043  
**DAM: RED SSFA JOANNA 93T**  
 RED RAINMAKER OF CUDLOBE 2K  
 RED GET-A-LONG JOANNA 276  
 RED GET-A-LONG JOANNA 0151

<b>2014 EPD'S</b>
BW -2.7
WW +62
YW +95
Milk +14
TM +46

BW	Adj. 205D wt	205 Index
70	707	111

REFERENCE SIRE



11

**11A** Super complete calving-ease bull with thickness and volume and natural good looks. Good indexes of 101 for weaning and 105 for his yearling. Use with confidence on heifers and expect market topping calves that start light and end heavy. Top 3% in the breed for REA.

**11 RED TED BANK STATEMENT 11A**  
 TED 11A ~ 1726597 ~ 1/7/2013

'14 EPD'S	
BW	-3.1
WW	+54
YW	+89
Milk+13	
TM	+40

RED LIC MISSION STATEMENT P27  
 Sire: **TNTS BANK STATEMENT T272**  
 RED NSFMS MISS DYNAMICS M14

RED LIC LANCER 806  
 RED LIC HANNAH 106  
 RED BUF CRD DYNAMICS 3820  
 RED NSFMS MISS IIMPACT G933  
 RED GP CATALYST 025  
 RED TED GOLD ROBBER 23L  
 RED TED BARNEY 89H  
 RED TEX ANGELO RED SILVEIRAS 23F

AOD	BW	WW	205D	ADG	365D	ADG (Lifetime)	MARB	REA	CWT
2	77	825	721	3.14	1261	3.08	+41	+49	+19

**13 RED TED WANDER 13A**  
 TED 13A ~ 1726596 ~ 1/7/2013

'14 EPD'S	
BW	-2.0
WW	+70
YW	+106
Milk+14	
TM	+49

BUF CRK HOB0 1961  
 Sire: **RED GET-ALONG WANDER 905**  
 RED SSFA JOANNA 93T

RED BUF CRK HOB0 1413  
 BUF CR CARRIE VC1174  
 RED GET-A-LONG GOLD MEDAL  
 RED GET-A-LONG JOANNA 276  
 RED GP CATALYST 025  
 RED TED GOLD ROBBER 23L  
 RED HOLDEN HI HO 7151  
 RED TED NONE BETTER 86H

RED TED CATALYST 107T  
 Dam: **RED TED CATALYST 18Y**  
 RED TED HOLDEN HI HO 76L

AOD	BW	WW	205D	ADG	365D	ADG (Lifetime)	MARB	REA	CWT
2	76	908	784	3.45	1289	3.13	+33	-0.4	+29



13

**13A** It's hard to find a bull with a 76 lb birth weight and an actual weaning of 908 lbs. The combination of Wander and Catalyst really seems to fit well. He's in the top 1% for Weaning Epd and top 2% in Yearling and indexed at 111 on both as well. Look no further if you need a sound bull that can impact the heifer program and pound down the scale, the type ranchers prefer.

RED ANGUS

**LX 23****RED TED 23A**

TED 23A ~ CM342202 ~ 1/10/2013 TW

RED BADLANDS NET WORTH 23U  
 Sire: **RED TED 82Y**  
 RED TED GRAND CANYON 154R

RED LCHMN GOLD ROBBER 1909E  
 Dam: **RED TED GOLD ROBBER 23L**  
 RED TED FED'S BO 36J

PFF R SHAQ 607  
 RED BADLANDS MEDORA 406  
 RED LCHMN GRND CANYON 1244G  
 RED TED BOOM BOOM 55H  
 RED LMAN KING ROB 8621  
 RED LACHMAN LARKABA 6384  
 RED TED FED'S BO 7G  
 RED TED BUSTER 78G

'14 EPD'S PED EST
BW -0.4
WW +54
YW +78
Milk+23
TM +50

AOD	BW	WW	205D	ADG	365D	ADG (Lifetime)	MARB	REA	CWT
2	85	831	687	2.94	1195	3.00	-0.11	+52	+16

**23A** A power bull with a can't miss maternal pedigree. If you want ever to retain heavy milking females with that brood cow look, this bull will do that and more. The 23L Gold Robber dam has a 108 lifetime index on all of her 11 calves. She has sons at Count Ridge Angus, Blades Angus and Larry Grossman. Beef cattle continue to be sold by the pound and this son is equipped for the task. He is a half brother to the Catalyst 30Y reference sire and half brother to Lot 107A in this years sale.

**LX 35****RED TED 35A**

TED 35A ~ CM342204 ~ 1/12/2013

RED BADLANDS NET WORTH 23U  
 Sire: **RED TED 82Y**  
 RED TED GRAND CANYON 154R

RED TED KINCHEN SAGE 57M  
 Dam: **RED TED KINCHEN SAGEBRUSH 14U**  
 RED TED MAKE MY DAY 6L

PFF R SHAQ 607  
 RED BADLANDS MEDORA 406  
 RED LCHMN GRND CANYON 1244G  
 RED TED BOOM BOOM 55H  
 RED KINCHEN SAGEBRUSH 487  
 RED TED NONE BETTER 25J  
 RED BIR MAKE MY DAY 981  
 RED TED FED'S BO 50J

'14 EPD'S PED EST
BW -1.0
WW +37
YW +49
Milk+21
TM +40

AOD	BW	WW	205D	ADG	365D	ADG (Lifetime)	MARB	REA	CWT
5	87	850	679	2.89	1272	3.30	-.11	+52	-3

**35A**

- Will improve udder quality and help improve milk
- Smooth fronted and long bodied
- Dam defines efficiency and maternal function

**LX 41****RED TED SPITFIRE 41A**

TED 41A ~ 1726612 ~ 1/13/2013

RED BIR MAKE MY DAY 981  
 Sire: **RED TED MAKE MY DAY 31R**  
 RED TED ABOVE & BEYOND 107N

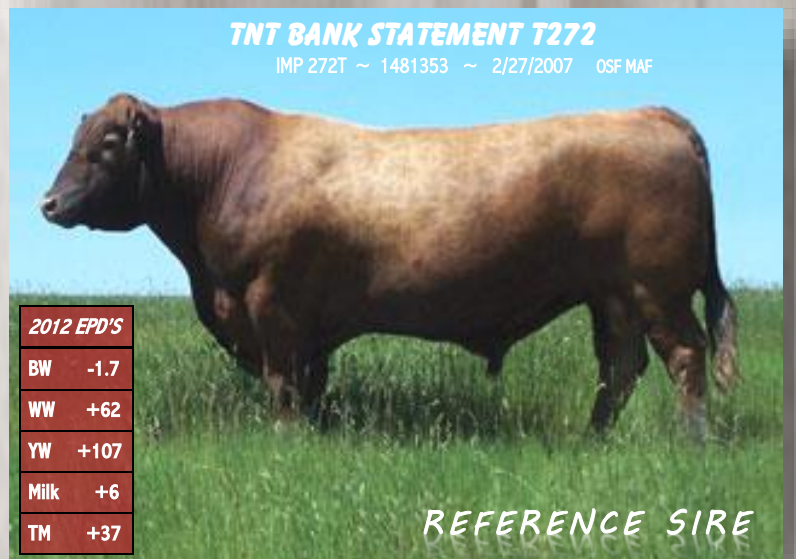
RED GLACIER MARIAS 548  
 Dam: **RED TED NONE BETTER 37J**  
 RED TED NONE BETTER 37J

RED BIR EASY RIDER 781  
 RED BIR TOW KANA 117-710  
 RED LCC ABOVE&BEYOND 1300J  
 RED TED MOIRA THE DUKE 19E  
 RED LCC HEAVEN OR BUST 1000B  
 RED GLACIER REBALAS  
 RED LMAN NONE BETTER 9604  
 RED TED ATALAYA REDFORD 39E

'14 EPD'S
BW+1.6
WW +66
YW+100
Milk+16
TM +49

AOD	BW	WW	205D	ADG	365D	ADG (Lifetime)	MARB	REA	CWT
14	101	995	798	3.40	1239	3.08	+0.72	+06	+31

**41A** A big, powerful growth and performance bull with high powered numbers. He will add payweight and sire the type and kind of feeder calves that bring a premium in the marketplace. An excellent choice if finishing cattle is your thing. He has that extra frame that can carry a lot of weight with the added bonus of having a Marbling Epd in the top 1% . His pedigree has the ability of producing quality females that will be strong phenotypic cows and have good longevity.



This Son of Mission Statement, stands down on a nearly ideal set of feet and legs. Use to incorporate the genetics of his sire and powerful, easy fleshing dam. They add a lot of depth with outstanding growth.



RED BECKTON LANCER T 1664  
**RED LIC LANCER 806**  
 RED LIC HB LIZZIE 606  
**SIRE: RED LIC MISSION STATEMENT P27**  
 RED HOLDEN HI HO  
**RED LIC HANNAH 106**  
 RED LIC KJ JAMIE 516

RED RCN DYNAMO 732  
**RED BUF CRK DYNAMICS 3820**  
 RED BUF CRK PRIMROSE 3150  
**DAM: RED NSF M MISS DYNAMICS M14**  
 RED BIEBER IMPPACT 4399  
**RED NSF M MISS IMPACT G933**  
 RED RRM TAWNI TK-516

2012 EPD'S
BW -1.7
WW +62
YW +107
Milk +6
TM +37

BW	Adj. 205D wt	205 Index	Adj. 365D wt	365D Index
90	807	101	1528	104

**RED ANGUS**



**LA** 43

**RED TED WANDER 43A**

TED 43A ~ 1771109 ~ 1/13/2013 OSF

RED BUF CRK HOBO 1961  
**Sire: RED GET-ALONG WANDER 905**  
 RED SSFA JOANNA 93T

RED WEBR DOC HOLLIDAY 2N  
**Dam: RED TED HOLLIDAY 47Y**  
 RED TED ROMEO 124S OSC

RED BUF CRK HOBO 1413  
 BUF CR CARRIE VC1174  
 RED GET-A-LONG GOLD MEDAL 7106  
 RED GET-A-LONG HOANNA 276  
 RED MLK CRK CUB 722  
 RED WEBR MS DOLLY 1L  
 RED BUF CRK ROMEO L081  
 RED TED NEW TREND 85P

'14 EPD'S	
BW	0.0
WW	+60
YW	+95
Milk+17	
TM	+47

AOD	BW	WW	205D	ADG	365D	ADG (Lifetime)	MARB	REA	CWT
2	86	905	798	3.48	1375	3.36	+ .37	+7	+34

**LA** 44

**RED TED FULL THROTTLE 44A**

TED 44A ~ CM347369 ~ 1/13/2013 MAC

RED TER-RON FULLY LOADED 540R  
**Sire: RED 6 MILE FULL THROTTLE 171T**  
 RED SIX MILE WITZEL 360J

RED BRYLOR MASTER PLAN 17M MAC  
**Dam: RED TED MASTER PLAN 84T** MAC  
 RED TED MCDALTON 141K

RED HEARTLAND KNIGHT CHARM  
 RED TER-RON GOLDIE 240L  
 RED PASQUIA ARAB 28E  
 RED C Y WITZEL 392Z  
 RED BASIN SENSATION 702E  
 RED BRYLOR BONITA 66K  
 RED TED LAZY DALTON 46H  
 RED TED THE DUKE 116H

'14 EPD'S PED EST	
BW	-0.5
WW	+46
YW	+82
Milk	+3
TM	+26

AOD	BW	WW	205D	ADG	YW	ADG (Lifetime)	MARB	REA	CWT
6	89	955	764	3.29	1325	3.27	+ .19	-.26	+18



**44A** A typical Throttle Son that is deep and has as much volume and capacity as any bull that will sell this year. Thick topped and heavy muscled right down low into his legs. An easy fleshing dam with loads of milk and a good square udder.

RED ANGUS



**45**

**RED TED FULL THROTTLE 45A**

TED 45A ~ 1726616 ~ 1/14/2013 TW

RED TER-RON FULLY LOADED 540R  
**Sire: RED 6 MILE FULL THROTTLE 171T**  
 RED SIX MILE WITZEL 360J

RED HEARTLAND KNIGHT CHARM  
 RED TER-RON GOLDIE 240L  
 RED PASQUIA ARAB 28E  
 RED C Y WITZEL 392Z  
 RED SSS MONU 4X 237C  
 RED RCRA SAMANTHA  
 RED TKP BODACIOUS 693  
 RED TED MISS BJR QUEENIE

RED BJR MONU 4X-303  
**Dam: RED TED MONU 189T**  
 RED TED BODACIOUS 37L

'14 EPD'S
BW+0.4
WW +59
YW +98
Milk +9
TM +38

AOD	BW	WW	205D	ADG	365D	ADG (Lifetime)	MARB	REA	CWT
6	66	784	628	2.74	1108	2.86	+0.20	-0.09	+29

**45A** A bull who's dam is something that a herd should be built around. Fertility, easy fleshing, with impeccable udder quality, long bodied with that good square top and base width that is unmatched. A half brother went to Wolf Creek Colony for \$6000 in the 2013 sale.



**50**

**RED TED CONQUEROR 50A**

TED 50A ~ 1758867 ~ 1/15/2013

Red HXC CONQUEST 4405P  
**Sire: RED LSF CONQUEROR 0026X**  
 RED LSF DINA R5000 U8039

RED BECKTON JULIAN GG B571  
 RED HXC ELLIE MAY MA638  
 RED FEDDES BIG SKY R9  
 RED LSF DINA N3044  
 RED GP CATALYST 025  
 RED TED GOLD ROBBER 23L  
 RED LSF COMBINATIONA301M  
 RED TED NONE BETTER 24J

RED TED CATALYST 107T  
**Dam: RED TED CATALYST 63Y**  
 RED TED COMBINATION 40T

'14 EPD'S
BW -2.8
WW +66
YW+110
Milk+20
TM +53

AOD	BW	WW	205D	ADG	365D	ADG (Lifetime)	MARB	REA	CWT
2	77	812	728	3.18	1319	3.25	+0.52	+0.13	+32

**50A** A smooth fronted bull that is highly recommended for heifers. Exceptional Epd with yearling in the top 1%. Moderate framed with usage on heifers likely for a number of years. The true definition of "sleep at night" calving ease.



**48**

**RED TED SPITFIRE 48A**

TED 48A ~ 1726618 ~ 1/15/2013

RED BJR MAKE MY DAY 981  
**Sire: RED TED MAKE MY DAY 31R**  
 RED TED ABOVE & BEYOND 107N

RED BJR EASY RIDER 781  
 RED BJR TOW KANA 117-710  
 RED LCC ABOVE&BEYOND 1300J  
 RED TED MOIRA THE DUKE 19E  
 RED LARSON MONU'S EMPIRE  
 RED JHK BUELL SWEETS  
 RED LEACHMAN HEAVENLY 8141  
 RED TED 811 FAUSTINE 20B

RED KINCHEN SAGEBRUSH 487  
**Dam: RED TED KINCHEN SAGEBRUSH 24P**  
 RED TED HEAVENLY TEMPEST 49D

'14 EPD'S
BW+2.6
WW +65
YW+103
Milk+14
TM +47

AOD	BW	WW	205D	ADG	365D	ADG (Lifetime)	MARB	REA	CWT
9	101	955	772	3.27	1264	3.18	+0.67	+0.05	+35

**48A** A heavy power bull from a cow that does nothing but throw power performed based calves. Yearling index of 105 and Weaning and Yearling Epd in the top 4%. He displays heavy muscle and masculinity. A true cow bull with Marbling in the top 1% and CWT in the top 2%.



RED ANGUS



**LA 55**

**RED TED BIG SKY 55A**

TED 55A ~ 1726623 ~ 1/16/2013

RED BIEBER MAKE MIME 7249  
**Sire: RED FEDDES BIG SKY R9**  
 RED REDDES LAKINA 310  
  
 RED SLC STORM 225P  
**Dam: RED CRIPPS DYNAMO 619S**  
 RED CRIPPS 426P

RED BJR MAKE MY DAY 981  
 RED BIEBER SIRENA 6708  
 RED LCHMN GRND CANYON 1244G  
 RED FEDDES LAKINA 954  
 RED YY STORM 901J  
 RED SLC PRALEE 188G  
 RED SSS BEDROCK 68H  
 RED WBR MISS DYNAMO 70'95

'14 EPD'S
BW +1.8
WW +62
YW +91
Milk +24
TM +54

AOD	BW	WW	205D	ADG	365D	ADG (Lifetime)	MARB	REA	CWT
7	96	925	750	3.19	1266	3.21	+0.59	+0.13	+27

**55A** A powerful bull with the pedigree capability of siring exceptional females with perfect udders. If your looking to bring some milk back into your cowherd this will be just the bull to do it. His females should be stamped with thickness, feet quality and exceptional docility. Milk EPD in the top 3% and Total Maternal in the top 1%.

**LA 61**

**RED TED CATALYST 61A**

TED 61A ~ 1767026 ~ 1/17/2013 MAF

RED TED CATALYST 107T  
**Sire: RED TED CATALYST 30Y**  
 RED TED HOLDEN HI HO 52N  
  
 RED BRYLOR MASTER PLAN 17M MAC  
**Dam: RED TED MASTER PLAN 99T MAC**  
 RED TED HOBO 83H

RED GP CATALYST 025  
 RED TED GOLD ROBBER 23L  
 RED HOLDEN HI HO 7151  
 RED TED BOOM BOOM 67G  
 RED BASIN SENSATION 702E  
 RED BRYLOR BONITA 66K  
 RED BUF CRK HOBO 1961  
 RED TED HORATIA BOOT 22E

'14 EPD'S
BW -3.7
WW +48
YW +85
Milk +10
TM +34

AOD	BW	WW	205D	ADG	365D	ADG (Lifetime)	MARB	REA	CWT
6	79	820	666	2.86	1179	3.04	+0.08	+0.01	+25



Red Feddes Big Sky - Sire to Lot 55

**61A** The first sons of Catalyst 30Y did not disappoint, and the females might even be better. He truly is a consistent calving ease sire who transmits growth, performance and eye catching style. This son is stout and thick while maintaining plenty of femininity with a clean front end. Recommended for heifers. The dam has flawless feet and legs with superior fleshing ability.

RED ANGUS

65



**65A** It's not hard to see why the Fully Loaded sire has been so popular over the years, with the substance and mass he transmits. This calf is no different and will sire calves that will have excellent payweight. He is backed by three generations of cows that had excellent udder quality and milk. His dam has a +27 Milk EPD.



**65**

**RED TED FULL THROTTLE 65A**

TED 65A ~ 1726628 ~ 1/18/2013

RED TER-RON FULLY LOADED 540R  
Sire: **RED 6 MILE FULL THROTTLE 171T**  
RED SIX MILE WITZEL 360J

RED HEARTLAND KNIGHT CHARM  
RED TER-RON GOLDIE 240L  
RED PASQUIA ARAB 28E  
RED C Y WITZEL 392Z  
SSS BLACK TREND 13B  
RED MEADOW CK MISS SEAMAN 31A  
RED GLACIER MARIAS 548  
RED TED THE DUKE 44G

RED BRYLOR NEW TREND 22D  
Dam: **RED TED NEW TREND 29R**  
RED TED GLACIER MARIAS 24L

'14 EPD'S
BW+2.3
WW +58
YW +96
Milk+12
TM +41

AOD	BW	WW	205D	ADG	365D	ADG (Lifetime)	MARB	REA	CWT
8	96	860	703	2.96	1249	2.88	+44	-.10	+31



**79**

**RED TED FULL THROTTLE 79A**

TED 79A ~ 1726637 ~ 1/21/2013

RED TER-RON FULLY LOADED 540R  
Sire: **RED 6 MILE FULL THROTTLE 171T**  
RED SIX MILE WITZEL 360J

RED HEARTLAND KNIGHT CHARM<sup>11L</sup>  
RED TER-RON GOLDIE 240L  
RED PASQUIA ARAB 28E  
RED C Y WITZEL 392Z  
RED LCHMN TOP BRASS 1049H  
RED WHF LASS 27G-29J  
RED BJR MAKE MY DAY 981  
RED TED FED'S BO 45J

RED LSF COMBINATION  
Dam: **RED TED COMBINATION 129T**  
RED TED MAKE MY DAY 57L

'14 EPD'S
BW+1.5
WW +65
YW+109
Milk +2
TM +34

AOD	BW	WW	205D	ADG	365D	ADG (Lifetime)	MARB	REA	CWT
6	94	903	744	3.17	1122	2.77	+49	-.03	+37

79



**79A** An attractive bull for the cows here. Complete, sound in his structure and definite foot improver. His dam has a tidy udder with small teats and has perfect feet and legs. Use to add length and the type of calves that will market well. Yearling EPD in the top 1%.

RED ANGUS



**83 RED TED BANK STATEMENT 83A**  
 TED 83A ~ CM347813 ~ 1/22/2013 OSC

RED LIC MISSION STATEMENT P27  
**Sire: TNTS BANK STATEMENT T272**  
 RED NSF M MISS DYNAMICS M14

RED BUF CRK ROMEO L081 OSC  
**Dam: RED TED ROMEO 124S** OSC  
 RED TED NEW TREND 85P

RED LIC LANCER 806  
 RED LIC HANNAH 106  
 RED BUF CRD DYNAMICS 3820  
 RED NSF M MISS IIMPACT G933  
 RED BECKTON JULIAN GG B571  
 RED BUF CRK PRIMROSE 5679  
 RED BRYLOR NEW TREND 22D  
 RED TED ELDRIDA SILVEIRAS 24F

'14 EPD'S PED EST
BW+0.5
WW +70
YW+115
Milk+17
TM +52

AOD	BW	WW	205D	ADG	YW	ADG (Lifetime)	MARB	REA	CWT
7	93	890	736	3.14	1288	3.31	+ .32	+ .41	+ .34

**83A** This bull is one of my personal favorites for a few reasons. He has an excellent profile, he's docile, and his now deceased dam had a perfect udder and feet. Weaning Epd in the top 1% along with Yearling Epd and quality carcass data that goes along with being a Bank Statement Son. Clean and smooth in the front end, he should provide excellent replacement heifers.

**85**

**RED TED 85A**

TED 85A ~ CM342215 ~ 1/22/2013

RED BADLANDS NET WORTH 23U  
**Sire: RED TED 82Y**  
 RED TED GRAND CANYON 154R

RED LCHMN GOLD ROBBER 1909E  
**Dam: RED TED GOLD ROBBER 97N**  
 RED TED GLACIER MARIAS 113L

PFF R SHAQ 607  
 RED BADLANDS MEDORA 406  
 RED LCHMN GRND CANYON 1244G  
 RED TED BOOM BOOM 55H  
 RED LMAN KING ROB 8621  
 RED LACHMAN LARKABA 6384  
 RED GLACIER MARIAS 548  
 RED TED ODESSA BUST

'14 EPD'S
BW N/A
WW N/A
YW N/A
Milk N/A
TM N/A

AOD	BW	WW	ADG	YW	ADG (Lifetime)
10	88	770	5.60	1184	4.61

**85A** -Sound footed and great hair  
 - Pedigree is loaded with maternal super sires, such as Glacier Marias 548, Gold Robber 1909E, & Grand Canyon  
 -Nice blend of performance and maternal



**87**

**RED TED PACKER 87A**

TED 87A ~ 1750875 ~ 1/23/2013

RED MESSMER JOSHUA 019P  
**Sire: RED MESSMER PACKER 008S**  
 RED MESSMER MILLIE 124P

RED BRYLOR NEW TREND 22D  
**Dam: RED TED NEW TREND 11L**  
 RED TED ANGELICA IOWA 29E

RED BECKTON JULIAN GG B571  
 RED MESSMER PANDORA M186  
 RED VGW TOP PICK 130  
 RED MESSMER MILLIE 9416  
 SSS BLACK TREND 13B  
 RED MEADOW CK MISS SEAMAN 31A  
 RED SCHULER IOWA 0741  
 RED TED CHIEF FEALTY 23A

'14 EPD'S
BW -0.8
WW +62
YW+101
Milk+12
TM +43

AOD	BW	WW	205D	ADG	365D	ADG (Lifetime)	MARB	REA	CWT
12	89	1021	871	3.82	1336	3.29	+ .40	+ .34	+ 29

**87A** -Big time performance bull with added frame & length  
 - Actual weaning at 1021lbs the heaviest of the entire calf crop  
 - Dam has a flawless phenotype and gentle disposition  
 - Weaning index of 123  
 - Yearling Epd in the top 5%

RED ANGUS

94

**94A** An absolute train of a bull that would work on heifers. Smooth front end and sound footed. A -3 BW Epd and balanced performance data. REA in the top 5%. Grandam 52N is the dam of the reference sire Catalyst 30Y. He will add femininity and length along with a good hair coat. One of the most complete bulls in the offering that will cover all the bases.  
**HERDBULL PROSPECT**



94

**RED TED PACKER 94A**

TED 94A ~ 1750878 ~ 1/24/2013

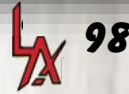
RED MESSMER JOSHUA 019P  
**Sire: RED MESSMER PACKER 008S**  
 RED MESSMER MILLIE 124P

OHRD DAKOTA COPPER 29K  
**Dam: RED TED DAKOTA COPPER 11U**  
 RED TED HOLDEN HI HO 52N

RED BECKTON JULIAN GG B571  
 RED MESSMER PANDORA M186  
 RED VGW TOP PICK 130  
 RED MESSMER MILLIE 9416  
 RED LCHMAN COPPER ROB 1204D  
 RED MESSMER OPHELIA 9502  
 RED HOLDEN HI HO 715  
 RED TED BOOM BOOM 67G

'14 EPD'S
BW -3.0
WW +61
YW +96
Milk+12
TM +43

AOD	BW	WW	205D	ADG	365D	ADG (Lifetime)	MARB	REA	CWT
5	81	901	748	3.25	1186	3.00	+41	+46	+22



98

**RED TED SAKIC 98A**

TED 98A ~ 1726645 ~ 1/25/2013

RED SIX MILE AVIATOR 217P  
**Sire: SIX MILE SAKIC 832S**  
 RED SIX MILE SIERA 257P

RED TED CATALYST 107T  
**Dam: RED TED CATALYST 90Y**  
 RED TED KINCHEN SAGEBRUSH 163R

RED WILDMAN DENALI 19L  
 RED RSL SUE 400F  
 RED SIX MILE CUJO 800M  
 RED BOUNTY B MISS SIERA BAR  
 RED GP CATALYST 025  
 RED TED GOLD ROBBER 23L  
 RED KINCHEN SAGEBRUSH 487  
 RED TED BASIN DRIFTER 95M

'14 EPD'S
BW -2.4
WW +57
YW +83
Milk+18
TM +47

AOD	BW	WW	205D	ADG	365D	ADG (Lifetime)	MARB	REA	CWT
2	69	689	649	2.83	1188	2.92	+20	-.10	+16

98

**98A** A stylish bull with built in calving-ease. Expect moderate framed females, that will be functional and correct. Great hair and docility . Highly recommended for heifers.



RED ANGUS



105

**LA 105** **RED TED CATALYST 105A**  
 TED 105A ~ 1726650 ~ 1/28/2013

RED GP CATALYST 025  
**Sire: RED TED CATALYST 107T**  
 RED TED GOLD ROBBER 23L

RED BADLANDS BONUS 702G  
**Dam: RED TED FARGO 28L**  
 RED TED CREEK CLEO 2Z

RED GLACIER MARIAS 548  
 RED BCRA MS DINA 9723  
 RED LCHMN GOLD ROBBER1909E  
 RED TED FED'S BO 36J  
 RED VGW BONUS 429  
 RED RACHEL R405  
 RED CREEK SIDE COPPER  
 RED MEM SPICY CREST 104T

'14 EPD'S  
 BW -1.1  
 WW +62  
 YW +95  
 Milk+18  
 TM +49

AOD	BW	WW	205D	ADG	365D	ADG (Lifetime)	MARB	REA	CWT
12	81	853	746	3.24	1260	3.16	+36	+09	+24

**105A** -Clean fronted and correct with added length  
 -Solid Epd profile along with actual data  
 - One of the heaviest milking dams in the herd

**LA 106** **RED TED 106A**  
 TED 106A ~ CM342209 ~ 1/28/2013

RED BADLANDS NET WORTH 23U  
**Sire: RED TED 82Y**  
 RED TED GRAND CANYON 154R

RED GLACIER MARIAS 548  
**Dam: RED TED GLACIER MARIAS 27N**  
 RED TED SOMETHIN SPECIAL 114K

PFFR SHAQ 607  
 RED BADLANDS MEDORA 406  
 RED LCHMN GRND CANYON 1244G  
 RED TED BOOM BOOM 55H  
 RED LCC HEAVEN OR BUST 1000B  
 RED GLACIER REBALAS  
 RED KIM SOMETHIN SPECIAL  
 RED TED CLYMENE HANDFORD 16E

'14 EPD'S  
 BW -0.4  
 WW +40  
 YW +49  
 Milk+22  
 TM +42

AOD	BW	WW	205D	ADG	365D	ADG (Lifetime)	MARB	REA	CWT
10	70	703	593	2.55	1086	2.82	+-.11	+17	-2

**106A**  
 - Nice option for heifers  
 - Will add vigor to your calves at birth  
 - Heavy milking dam with a Milk Epd in the top 10%



109

**LA 109** **RED TED FULL THROTTLE 109A**  
 TED 109A ~ 1726654 ~ 1/30/2013

RED TER-RON FULLY LOADED 540R  
**Sire: RED 6 MILE FULL THROTTLE 171T**  
 RED SIX MILE WITZEL 360J

RED FABULOUS FRONT LINE 315N  
**Dam: RED TED FRONT LINE 50W**  
 RED TED CATALYST 139T

RED HEARTLAND KNIGHT CHARM11L  
 RED TER-RON GOLDIE 240L  
 RED PASQUIA ARAB 28E  
 RED C Y WITZEL 392Z  
 RED TED HI HO 52K  
 RED CRESCENT CREEK ANNIE 1G  
 RED GP CATALYST 025  
 RED TED ROBIN HOOD 15L

'14 EPD'S  
 BW+1.9  
 WW +63  
 YW+103  
 Milk +7  
 TM +39

AOD	BW	WW	205D	ADG	365D	ADG (Lifetime)	MARB	REA	CWT
4	93	882	767	3.29	1294	3.25	+34	-.03	+34

**LA 112** **RED TED DETOUR 112A**  
 TED 112A ~ 1726653 ~ 1/30/2013

RED RMJ REDMAN 1T  
**Sire: RED LAZY MC CC DETOUR 2W**  
 RED LAZY MC BESS 12S

RED LCC CHEYENNE B221L  
**Dam: RED TED CHEYENNE 20U**  
 RED TED GOLD ROBBER 97N

RED 5L NORSEMAN KING 2291  
 CROWFOOT DURUBA 4033P  
 RED LAZY MC SMASH 41N  
 RED LAZY MC BESS 73N  
 RED BFCK CHEROKEE CNYN 4912  
 RED HXC 701G  
 RED LCHMN GOLD ROBBER 1909E  
 RED TED GLACIER MARIAS 113L

'14 EPD'S  
 BW -4.0  
 WW +46  
 YW +86  
 Milk+24  
 TM +46

AOD	BW	WW	205D	ADG	365D	ADG (Lifetime)	MARB	REA	CWT
5	80	700	597	2.52	1130	2.93	+31	+15	+16

**112A** - Recommended for heifers  
 - Will infuse calf vigor  
 - Top 3% for Milk and - 4 for BW Epd

**109A** A standout calf from birth with his thick hair, muscle expression and length. He is loaded with volume and substance. One of the better cow bulls in the offering. The bottom of his pedigree has some of the deepest wedge shaped cows we have ever owned. Yearling Epd in the top 5%. Weaning index of 106 and Yearling index of 102

RED ANGUS

**LX 116****RED TED MAX 116A**

TED 116A ~ 1726659 ~ 2/1/2013

RED ML MAX 9007W  
**Sire: RED RCR MAX 262Y**  
 RED 999 INDEED 630S'823U

RED LSF COMBINATION A301M  
**Dam: RED TED COMBINATION 51Y**  
 RED TED KINCHEN SAGEBRUSH 70R

RED CROWFOOT 6253S  
 RED ML JULIAN ANGEL 109L  
 RED SIX MILE INDEED 808S  
 RED 999 SV 823'630S  
 RED LCHMN TOP BRASS 1049H  
 RED WHF LASS 27G-29J  
 RED KINCHEN SAGEBRUSH 487  
 RED TED GLACIER MARIAS 10L

'14 EPD'S

BW -0.6

WW +56

YW +88

Milk+11

TM +39

AOD	BW	WW	205D	ADG	365D	ADG (Lifetime)	MARB	REA	CWT
2	71	650	631	2.73	1142	2.78	+42	-.05	+21

**116A** Heifer bull with ample growth. The Max 262Y calves were extremely vigorous at birth, an added value any heifer program will more than appreciate.

**LX 120****RED TED MAX 120A**

TED 120A ~ 1726663 ~ 2/5/2013

RED ML MAX 9007W  
**Sire: RED RCR MAX 262Y**  
 RED 999 INDEED 630S'823U

RED CROWFOOT OLES'S OSCAR 2042M  
**Dam: RED TED OLES'S OSCAR 133W**  
 RED TED GLACIER MARIAS 27N

RED CROWFOOT 6253S  
 RED ML JULIAN ANGEL 109L  
 RED SIX MILE INDEED 808S  
 RED 999 SV 823'630S  
 RED MLK CRK CUB 722  
 RED CROWFOOT OMEGA 9179J  
 RED GLACIER MARIAS 548  
 RED TED SOMETHIN SPECIAL114K

'14 EPD'S

BW -1.5

WW +51

YW +78

Milk+20

TM +45

AOD	BW	WW	205D	ADG	365D	ADG (Lifetime)	MARB	REA	CWT
4	79	758	675	2.91	1175	2.98	+49	+04	+14

**120A**

- Calving ease bull with the right conformation to work on heifers
- Dam is one of the best young cows in the herd phenotypically
- Solid Epd profile and performance
- Maternally charged pedigree that should leave outstanding daugh-

**LX 121****RED TED SAKIC 121A**

TED 121A ~ 1726664 ~ 2/5/2013

RED SIX MILE AVIATOR 217P  
**Sire: SIX MILE SAKIC 832S**  
 RED SIX MILE SIERA 2 57P

TNTS BANK STATEMENT T272  
**Dam: RED TED BANK STATEMENT 53Y**  
 RED TED MAKE MY DAY 215P

RED WILDMAN DENALI 19L  
 RED RSL SUE 400F  
 RED SIX MILE CUJO 800M  
 RED BOUNTY B MISS SIERA BAR  
 RED LC MISSION STATEMENT T272  
 RED NSFM MISS DYNAMICS M14  
 RED TED MAKE MY DAY 74J  
 RED TED NONE BETTER 25J

'14 EPD'S

BW -0.7

WW +60

YW +90

Milk+15

TM +45

AOD	BW	WW	205D	ADG	365D	ADG (Lifetime)	MAB	REA	CWT
2	82	720	701	3.02	1271	3.11	+20	+06	+22

**121A** Balanced bull out of a first calf heifer. An excellent number spread on this moderate, easy fleshing bull. Another calving-ease bull that will compliment anyone's cowherd. Big topped, stout and lots of hair.



126



**126A** This Catalyst Son is a moderate, thick beef bull with volume and capacity. He demonstrates pounds in the right package. Thick hair coat and great disposition. A bull I would not be afraid to throw on heifers and then graduate to the cowherd without compromising your performance goals. Half brothers reside at Parkland Colony and Wolf Creek Colony.

**127A**

-Moderate, easy fleshing and heavy milking dam.  
- Will add hair and a pleasant disposition



**126**

**RED TED CATALYST 126A**

TED 126A ~ 1726666 ~ 2/7/2013

'14 EPD'S
BW -3.0
WW +45
YW +72
Milk+17
TM +39

RED TED CATALYST 107T  
Sire: **RED TED CATALYST 30Y**  
RED TED HOLDEN HI HO 52N

RED GP CATALYST 025  
RED TED GOLD ROBBER 23L  
RED HOLDEN HI HO 7151  
RED TED BOOM BOOM 67G  
RED KINCHEN SAGEBRUSH 487  
RED TED NONE BETTER 25J  
RED GOLD-BAR JACKPOT 803B  
RED TED GLACIER FIRE 59H

RED TED KINCHEN SAGEBRUSH 57M  
Dam: **RED TED KINCHEN SAGEBRUSH 196S**  
RED TED JACKPOT 18M

AOD	BW	WW	205D	ADG	365D	ADG (Lifetime)	MARB	REA	CWT
7	84	790	692	2.97	1239	3.19	+37	+0.09	+9



**127**

**RED TED 127A**

TED 127A ~ CM342211 ~ 2/7/2013

'14 EPD'S
BW -1.1
WW +41
YW +49
Milk+21
TM +41

RED BADLANDS NET WORTH 23U  
Sire: **RED TED 82Y**  
RED TED GRAND CANYON 154R

PFF R SHAQ 607  
RED BADLANDS MEDORA 406  
RED LCHMN GRND CANYON 1244G  
RED TED BOOM BOOM 55H  
RED LARSON MONU'S EMPIRE  
RED JHK BUELL SWEETS  
RED GLACIER MARIAS 548  
RED TED BARNEY 3X

RED KINCHEN SAGEBRUSH 487  
Dam: **RED TED KINCHEN SAGEBRUSH 74R**  
RED TED GLACIER MARIAS 26L

AOD	BW	WW	205D	ADG	365D	ADG (Lifetime)	MARB	REA	CWT
8	84	813	712	3.06	1143	2.88	-.11	+0.52	-3



**132**

**RED TED DETOUR 132A**

TED 132A ~ 1726670 ~ 2/8/2013

'14 EPD'S
BW+0.2
WW +46
YW +81
Milk+16
TM +39

RED RMJ REDMAN 1T  
Sire: **RED LAZY MC CC DETOUR 2W**  
RED LAZY MC BESS 12S

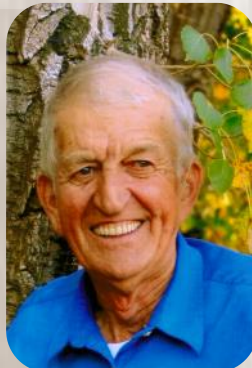
RED 5L NORSEMAN KING 2291  
CROWFOOT DURUBA 4033P  
RED LAZY MC SMASH 41N  
RED LAZY MC BESS 73N  
RED TER-RON FULLY LO ADED540R  
RED SIX MILE WITZEL 360J  
RED TED NEW TREND 13L  
RED TED BODACIOUS 37L

RED 6 MILE FULL THROTTLE 171T  
Dam: **RED TED FULL THROTTLE 82X**  
RED TED NEW TREND RE RUN 138N

AOD	BW	WW	205D	ADG	365D	ADG (Lifetime)	MARB	REA	CWT
3	96	682	641	2.66	185	2.94	+0.13	+0.11	+19

**132A** -Expressive muscle shape with a table top  
-Stout, rugged with superb structure and soundness

TED BOUWMAN - February 24, 1938 - May 31, 2013  
Ted worked with us for 28 years and will be dearly missed. He was a devoted worker who took pride in a job well done. He worked full time, and rarely missed a day of work, up until two weeks before his sudden passing. Besides his loving wife Hennie, children and grandchildren, his passion was feeding, bedding and fencing; along with camping and fishing on his days off. Ted will forever remain in our hearts.



136

**136A** A unique bull in the amount of natural thickness, muscle and fleshing ability that he incorporates into a low birth weight package. The Romeo 149S dam is the model of efficiency and is a beautiful wedge shaped cow. He represents everything we look for in a commercial breeding bull whether it be marketing heavy calves in the fall or holding back a pen of replacement heifers.



**136**

**RED TED MAX 136A**

TED 136A ~ CM347814 ~ 2/9/2013 OSC

'14 EPD'S PED EST
BW -0.5
WW +56
YW +92
Milk+21
TM +48

RED ML MAX 9007W  
**Sire: RED RCR MAX 262Y**  
 RED 999 INDEED 630S'823U

RED BUF CRK ROMEO L081  
**Dam: RED TED ROMEO 149S OSC**  
 RED TED HOLDEN HI HO 52N

RED CROWFOOT 6253S  
 RED ML JULIAN ANGEL 109L  
 RED SIX MILE INDEED 808S  
 RED 999 SV 823'630S  
 RED BECKTON JULIAN GG B571  
 RED BUF CRK PRIMROSE 5679  
 RED HOLDEN HI HO 7151  
 RED TED BOOM BOOM 67G

AOD	BW	WW	205D	ADG	YW	ADG (Lifetime)	Marb.	REA	CWT
7	81	836	N/A	3.19	1202	3.20	+0.33	-0.03	+24



**137**

**RED TED 137A**

TED 137A ~ CM342212 ~ 2/10/2013

'14 EPD'S
BW+0.1
WW +47
YW +62
Milk+21
TM +45

RED BADLANDS NET WORTH 23U  
**Sire: RED TED 82Y**  
 RED TED GRAND CANYON 154R

SIX MILE SAKIC 832S  
**Dam: RED TED SAKIC 3W**  
 RED TED CHATEAU 15T

PFF R SHAQ 607  
 RED BADLANDS MEDORA 406  
 RED LCHMN GRND CANYON 1244G  
 RED TED BOOM BOOM 55H  
 RED SIX MILE AVIATOR 217P  
 RED SIX MILE SIERA 257P  
 RED GLACIER CHATEAU 744  
 RED TED NEOMA THE DUKE 30E

AOD	BW	WW	205D	ADG	365D	ADG (Lifetime)	MARB	REA	CWT
3	94	887	802	3.45	1348	3.39	-0.11	+0.52	+6

137

**137A** These 82Y Sons bring the basics of efficiency, real world fleshing ability with incredible length, muscle and superior foot quality. This bull is no different with high performance and will add pounds and profit to every calf he sires. Yearling index of 106 and Weaning index of 111. Half brother working at Greg Romeril's.



RED ANGUS



138

**138A** A massive, thick, rugged cow bull who is our best indexing bull this year, WI 113 and YI 126. An all-around beef bull that would be a major asset to anyone who is backgrounding or finishing cattle.

**139A** Sound footed, moderate framed and complete. YI 108

**LX 138**

**RED TED MAX 138A**

TED 138A ~ 1726674 ~ 2/11/2013

RED ML MAX 9007W  
**Sire: RED RCR MAX 262Y**  
 RED 999 INDEED 630S'823U  
  
 OHRR DAKOTA COPPER 29K  
**Dam: RED TED DOKOTA COPPER 144W**  
 RED TED BODACIOUS 37L

RED CROWFOOT 6253S  
 RED ML JULIAN ANGEL 109L  
 RED SIX MILEINDEED 808S  
 RED 999 SV 823'630S  
 RED LCHMAN COPPER ROB 1204D  
 RED MESSMER OOPHELJA 9502  
 RED TKP BODACIOUS 693  
 RED TED MISS BJR QUEENIE

'14 EPD'S

BW+0.4
WW +64
YW +98
Milk+22
TM +54

AOD	BW	WW	205D	ADG	365D	ADG (Lifetime)	MARB	REA	CWT
4	88	892	808	3.51	1458	3.75	+0.24	+0.03	+29

**LX 139**

**RED TED 139A**

TED 139A ~ CM342213 ~ 2/11/2013

RED BADLANDS NET WORTH 23U  
**Sire: RED TED 82Y**  
 RED TED GRAND CANYON 154R  
  
 RED GLACIER HI COUNTRY 926  
**Dam: RED TED HIGH COUNTRY 51P**  
 RED TED VALERIE SILVEIRAS

PFF R SHAQ 607  
 RED BADLANDS MEDORA 406  
 RED LCHMN GRND CANYON 1244G  
 RED TED BOOM BOOM 55H  
 RED GLACIER CHATEAU  
 RED GLACIER VERDALE  
 RED SILVEIRAS REDFORD  
 RED TED HOB TABITHA

'14 EPD'S

BW+0.0
WW +46
YW +64
Milk+14
TM +37

AOD	BW	WW	205D	ADG	365D	ADG (Lifetime)	MARB	REA	CWT
9	84	751	668	2.85	1226	3.17	+0.11	+0.52	+8



139

RED ANGUS

**LX 142****RED TED DETOUR 142A**

TED 142A ~ 1726677 ~ 2/13/2013

RED RMI REDMAN 1T  
**Sire: RED LAZY MC CC DETOUR 2W**  
 RED LAZY BESS 12S

RED CROWFOOT OLES'S OSCAR 2042M  
**Dam: RED TED OLES OSCAR 121X**  
 RED TED GRAND CANYON 124T

RED 5L NORSEMAN KING 2291  
 CROWFOOT KURUBA 4033P  
 RED LAZY MC SMASH 41N  
 RED LAZY MC BESS 73N  
 RED MLK CRK CUB 722  
 RED CROWFOOT OMEGA 9179J  
 RED LCHMN GRND CANYON 1244G  
 RED TED NEW TREND 85P

'14 EPD'S  
 BW -2.3  
 WW +51  
 YW +90  
 Milk+23  
 TM +49

AOD	BW	WW	205D	ADG	365D	ADG (Lifetime)	MARB	REA	CWT
3	84	770	728	3.14	1262	3.14	+0.31	+0.23	+21

**142A** Attractive and balanced in both phenotype and numbers and comes from one of the best young cows in our herd. Strong maternal dam whose bull calf this year already looks like another stud of a bull calf. One of the top all around bulls in the offering. Keep every female in complete confidence.

**LX 145****RED TED CATALYST 145A**

TED 145A ~ 1726679 ~ 2/16/2013

RED GP CATALYST 02S  
**Sire: RED TED CATALYST 107T**  
 RED TED GOLD ROBBER 23L

RED BJR RAMBLER 516Z  
**Dam: RED TED RAMBLER 52L**  
 RED TED BEAU 109G

RED GLACIER MARIAS 548  
 RED BCRA MS DINA 9723  
 RED LCHMN GOLD ROBBER 1909E  
 RED TED FED'S BO 36J  
 RED FCC RAMBO 502  
 BJR GOLDE 355-1122  
 RED ROSELEA BEAU 142D  
 RED TED PERFECTA C-CHIEF 22C

'14 EPD'S  
 BW -2.2  
 WW +61  
 YW +99  
 Milk+22  
 TM +53

AOD	BW	WW	205D	ADG	365D	ADG (Lifetime)	MARB	REA	CWT
12	85	837	785	3.42	1283	3.20	+0.36	+0.20	+25

**145A** A smooth made, long bodied individual that will provide zero calving issues and reduce labor. The calves will perform as good as any. Very well balanced Epd's and performance. WI 110

**LX 152****RED TED CONQUEROR 152A**

TED 152A ~ 1768161 ~ 2/23/2013 OSF

RED HXC CONQUEST 4405P  
**Sire: LSF CONQUEROR 0026X**  
 RED LSF DINA R5000

RED LCHMN GRND CANYON 1244G  
**Dam: RED TED GRAND CANYON 31M**  
 RED TED BJR CLEMENTIIA 28A

RED BECTON JULIAN GG B571  
 RED HXC ELLIE MAY MA638  
 RED FEDDES BIG SKY R9  
 RED LSF DINA N3044  
 RED BUF CRK CHF 824-1658  
 RED KRN REBA'S ROBIN  
 RED CREEK SIDE COPPER  
 RED TED LEADING BOOT LADY 5X

'14 EPD'S  
 BW -1.7  
 WW +64  
 YW+104  
 Milk+24  
 TM +56

AOD	BW	WW	205D	ADG	365D	ADG (Lifetime)	MARB	REA	CWT
11	88	771	746	3.21	1245	3.10	+0.75	+0.10	+27

**152A** The youngest red calf in the sale with an impressive Epd profile. Top 5% for Weaning Epd, top 3% for Yearling Epd, Marbling top 1%, CWT top 10%, REA top 15% and Milk in the top 3%. The dam indexed 113 on 9 calves. Half brothers have sold in the past to Lourens Van Essen and Ewelme Farming.

**RED ANGUS**



GRP

**LX** 38

**TED NETWORK 38A Red Carrier**

TED 38A ~ 1750874 ~ 1/13/2013

S A V 8180 TRAVELER 004  
**Sire: S A V NETWORK 4200**  
 S A V MAY 6269

RED GLACIER MARIAS 548  
**Dam: RED TED GLACIER MARIAS 39X**  
 RED TED SHOCO DATA 68T

SITZ TRAVELER 8180  
 BOYD FOREVER LADY 8003  
 S A F 598 BANDO 5175  
 S A V MAY 6269  
 RED LCC HEAVEN OR BUST 1000B  
 RED GLACIER REBALAS  
 RED SHOCO DATA  
 RED TED GRAND CANYON 31M

'14 EPD'S
BW+0.4
WW +66
YW+108
Milk+26
TM +59

AOD	BW	WW	205D	ADG	365D	ADG (Lifetime)	MARB	REA	CWT
3	82	834	706	3.04	1193	2.95	+78	+23	+35

**38A** We decided to combine two of our favorite sire's together, with Network 4200 and Glacier Marias 548 and this bull did not disappoint. Three generations of superior fertility and maternal on the Red side of the pedigree and the Network 4200 cattle have proven themselves time and time again. Impressive performance along with Epd profile. Weaning weight in the top 3%, Yearling weight in the top 2%, Milk in the top 1%, along with Total Maternal. He adds carcass quality as well, with CWT in the top 2% and Marbling in the top 1%. A predictable pedigree that will genetically advance any cattle operation.

**S A V NETWORK 4200**



**RED GLACIER MARIAS 548 - SIRE OF TED 39X**



73



**73A** A Red Carrier bull that has a feminine look while still maintaining exceptional thickness and volume. Beautiful hair, and he stands out in the pen. A power bull with loads of performance on a frame that will require very little calving assistance. Good neck extension and shoulders. Yearling Index 118



**73**

**TED 82Y - 73A** Red Carrier

TED 73A ~ CM 342206 ~ 1/19/2013

RED BADLANDS NETWORK 23U  
**Sire: RED TED 82Y**  
 RED TED GRAND CANYON 154R  
 MYTTY IN FOCUS  
**Dam: TED IN FOCUS 114W**  
 TED BORDER BUTTE KATHLEEN 21'02

PFF R SHAQ 607  
 RED BADLANDS MEDORA 406  
 RED LCHMN GRND CANYON 1244G  
 RED TED BOOM BOOM 55H  
 S A F FOCUS OF ER  
 MYTTY COUNTESS 906  
 STEVENSON RAINMAKER 630G  
 CUDLOBE KATHLEEN 92K

'14 EPDS

BW -0.5  
 WW +49  
 YW +77  
 Milk +27  
 TM +51

AOD	BW	WW	205D	ADG	365D	ADG (Lifetime)	MARB	REA	CWT
4	96	928	776	3.32	1382	3.51	-.11	+.52	+15

MTTY IN FOCUS - SIRE OF TED 114W



RED LCHMN GRAND CANYON 1244G - SIRE OF TED 154R



BW - 0.4  
WW +52  
YW +86  
Milk +19  
TM +45

BW - 89  
205D - 681  
365D - 1257



HALF BROTHER - NEW ERA 87Y

## RED MRLA FLEX

MRLA 49Z ~ 1685353 ~ 1/15/2012

SAV NET WORTH 4200  
**Sire: MRLA 53W**  
RED BROX MS CHEROKEE 13N

RED BJR MAKE MY DAY 981  
**Dam: RED GET-A-LONG FIREFLY 363**  
RED WCR MAVERICK'S FIREFLY 11L

S A V 8180 TRAVELER 004  
S A V MAY 2410  
RED RAINMAKER OF CUDLOBE 2K  
RED BROX MS CHEROKEE 43L  
RED BJR EASY RIDER 781  
RED BJR TOW KANA 117-710  
RED SSS MAVERICK 249W  
RED SSS FIREFLY 685A

- Network 4200 Grandson
- High Seller from MRLA at \$50,000
- Unmatched base width, on perfect feet and legs
- Incredible profile and muscle definition
- Half Brother to 2013 National/Reserve Grand Champion bull, New Era 87Y at Six Mile.



FLEX AS A YEARLING



BW - 0.7  
WW +65  
YW +116  
Milk +25  
TM +58

AOD	BW	WW	205D	ADG	365D	ADG (Lifetime)	MARB	REA	CWT
3	78	844	752	3.29	1167	2.85	+0.56	+0.24	+39

## TED HARVESTOR 108A (RC)

TED 104A ~ 1726651 ~ 1/29/2013

S A V HERITAGE 6295  
**Sire: S A V HARVESTOR 0338**  
S A V EMBLYNETT 7749

RED CROWFOOT OLE'S OSCAR 2042M  
**Dam: RED OLES OXCAR 139X**  
RED TED KINCHEN SAGEBRUSH 164P

CAR DUKE 104  
S A V BLACKCAP MAY 4136  
S A V NET WORTH 4200  
S AV EMBLYNETTE DIAMOND 6377  
RED MLK CRK CUB 722  
RED CROWFOOT OMEGA 9179J  
RED TED KINCHEN SAGEBRUSH 57M  
RED TED LEADER LOGAN 96M

- Low birth weight Red Carrier Son of S A V super sire HARVESTOR
- Thick made, wide based, incredible volume and rib
- Awesome hair, feet and legs
- YW EPD in top 1%, Milk in top 2% and TM in top 1%
- Top 3% for Marb. and top 1% for Carcass Weight

Dam of Harvestor 108A



BW +3.4  
WW +77  
YW +139  
Milk +16  
TM +54

AOD	BW	WW	205D	ADG	365D	ADG (Lifetime)	MARB	REA	CWT
7	104	840	787	3.33	1369	3.48	+0.22	+0.15	+58

## TED HARVESTOR 154A (RC)

TED 154A ~ 1754922 ~ 2/24/2013 OSF MAF

S A V HERITAGE 6295  
**Sire: S A V HARVESTOR 0338**  
S A V EMBLYNETT 7749

RED BRYLOR MASTER PLAN 17M  
**Dam: RED TED MASTER PLAN 137S**  
RED TED FARGP 33L

CAR DUKE 104  
S A V BLACKCAP MAY 4136  
S A V NET WORTH 4200  
S AV EMBLYNETTE DIAMOND 6377  
RED BASIN SENSATION 702E  
RED BRYLOR BONITA 66K  
RED BADLANDS BONUS 702  
RED TED MAJESTA REDFORD 57D

- S A V HARVESTOR Red Carrier Son
- Explosive growth, stout, rugged, heavy duty frame
- Thick power bull with a performance pedigree
- WW & YW EPD in the top 1%, top 1% for Carcass Weight
- Expressive muscle definition
- Perfect structure

# For 2014 & Beyond

## GMRA PEACEMAKER 1216

VGW JUSTICE 614  
**Sire: FRITZ JUSTICE 8013**  
 FRITZ CHRIS 6047

BUF CRK PATRIOT M183  
 VGW M82-FIREFLY 0479  
 5L HOBO BEN 04-4422  
 FRITZ CRIS 1051  
 LC LANCER 806  
 LC HANNAH 106  
 BIF CRK BARNEY 3474  
 GMRA THELMA 733

LC MISSION STATEMENT P27  
**Dam: GMRA THELMA 930**  
 GMRA THELMA 319

- 2012 High Seller at GMRA
- First calves in 2014 that we've had, are CALVING EASE with ample vigour and hair
- Attractive EPD's and individual performance.
- Quality Carcass Merit

BW - 5.0  
 WW +71  
 YW +116  
 Milk +23  
 TM +58

MARB +.44  
 REA +.58  
 CWT +37

BW - 74  
 205D - 788  
 365D - 1312  
 Scrotal - 41cm



## BEIBER ROLLIN DEEP Y118

RED BEIBER ROUGH RIDER 10712  
**Sire: RED BEIBER ROOSEVELT W384**  
 RED BEIBER SHEBA 9602

RED BASIN TRENDSETTER 6074  
 RED BEIBER ADELLE 8958  
 C A FUTURE DIRECTION 5321  
 RED BEIBER SHEBA 5537  
 RED BEIBER BOONE 6927  
 RED BEIBER QUE 6007  
 RITO 1/2 OF 2536 RITO 616  
 RED BEIBER TILLY 7334

RED BEIBER BOONE 8000  
**Dam: RED BEIBER TILLY 399W**  
 RED BEIBER TILLY 3035

- High Seller at Beiber's 2012 sale at \$33,000
- Cow Maker
- Calves are exceptionally long with clean shoulders
- Carcass Merit Sire

BW +0.3  
 WW +69  
 YW +109  
 Milk +29  
 TM +63

MARB +.66  
 REA +.54  
 CWT +35

BW - 93  
 205D - 643  
 365D - 1295  
 Scrotal - 41cm



## RED BRYLOR RED KODIAK 3A

LMP 3A ~ 1736024 ~ 1/11/2013

HF KODIAK 5R  
**Sire: BLACK BRYLOR KODIAK 204Y**  
 RED XXX LAKME 70M

SANDY BAR ADVANTAGE 43M  
 WILBAR RUBY 955N  
 RED BRYLOR NEW TREND 22D  
 RED FINE LINE LAKME 21J  
 RED VGW RAMBLER 1000  
 RED XXX LAKME 70M  
 RED TED HI HO 35K  
 RED DUS FAYETTE 8G

RED BRYLOR SDL PASQUALE 213P  
**Dam: RED BRYLOR FAYETT 40Y**  
 RED FL FAYETT 33M

- Red Son of the High Impact Kodiak 5R
- Calving ease pedigree
- Fresh, yet proven genetics

BW - 3.6  
 WW +54  
 YW +86  
 Milk +22  
 TM +48

BW - 75  
 205D - 812



## RED TED PACKER 107Z

TED 107Z ~ 1672628 ~ 2/1/2012

RED MESSMER JOSHUA 019P  
**Sire: RED MESSMER PACKER S008**  
 RED MESSMER MILLIE 124P

RED BECKTON JULIAN GG B571  
 RED MESSMER PANDORA M186  
 RED VGW TP [OCK 130  
 RED MESSMER MILLIE 9416  
 RED MEADOW CK 904 52K  
 RED KRN CRESCENT CREEK ANNIE 1G  
 RED LCHMN GOLD ROBBEY 1909E  
 RED TED FED'S BO 36J

RED FABULOUS FRONT LINE 315N  
**Dam: RED TED FRONTLINE 151W**  
 RED TED GOLD ROBBEY 23L

- Exceptional volume and stout
- Calves in 2014 are already displaying superior thickness with moderate birth weights
- Best hair coat we've seen on a Packer son
- Top 3% on REA
- Calving Ease

BW - 1.5  
 WW +63  
 YW +102  
 Milk +11  
 TM +42



BW	WW	205D	ADG	365D	ADG (Lifetime)	MARB	REA	CWT
83	717	694	2.98	1181	2.92	+0.36	+0.46	+28

## S A V HARVESTOR 0338

IMP 0338X ~ 1633982 ~ 4/18/2010

CAR DUKE 104  
**SIRE: S A V HERITAGE 6295**  
 S A V BLACKCAP MAY 4136

CAR TRACKER 904  
 C A R MISS RAINCANCER 421  
 S A V 8180 TRAVELER 004  
 S A V MAY 2397  
 S A V 8180 TRAVELER 004  
 S A V MAY 2410  
 PRO TREND 9042  
 S A V SKY DIAMOND 2582

S A V NETWORTH 4200  
**DAM: S A V EMBLYNETTE 7749**  
 S A V EMBLYNETTE DIAMOND 6377

BW	WW	YW
87	988	1631

### 2014 EPD'S

BW	+6.5
WW	+75
YW	+150
Milk	+33
TM	+71

- Recognized as one of the greatest breeding achievements in S A V history
- Top performing, top scanning, record selling sire group in history
- Perfect structure, width, volume and muscle expression
- Daughters look to be potentially the best heifers we've raised



## S A V BRAND NAME 9115

IMP 9115W ~ 1600096 ~ 3/1/2009 AMF CAF MHF DDF

G A R GRID MAKER  
**SIRE: S A V BISMARCK 5682**  
 S A V ABIGAIL 0451

G A D R TRAVELER 044  
 G A R PRECISION 2536  
 SCHOENES FIX IT 826  
 S A V ABIGALE 6062  
 PARAMONT AMBUSH 2172  
 RC ANITA T BANDO 918903  
 LEACHMAN RIGHT TIME  
 S A R PROSPECTOR MAY 9124

B B C BUSHWACKER 41-93  
**DAM: S A V BLACKCAP MAY5530**  
 S A V MAY 7238

BW	Adj. 205D wt	Adj. 365D wt
78	1007	1563

### 2014 EPD'S

BW	+3.3
WW	+67
YW	+109
Milk	+28
TM	+62

- Sires easy fleshing, high performance cattle
- Exceptional depth, volume, and thickness



## CONNELLY FINAL PRODUCT

IMP 7212T ~ 1643843 ~ 1/23/2007 AMF CAF NHF DMF DDF

G A R RETAIL PRODUCT  
**SIRE: CONNELLY PRODUCT 568**  
 PRIDE FINE OF CONANGA 566

G A R PRECISION 1680  
 G A R EXT 4927  
 BON VIEW NEW DESIGN 878  
 PRIDE FAN OF CONANGA 6456  
 LARKS CANYON 74D4  
 RONNA OF CONANGA 64452  
 PAPA UNIVERSE 515  
 EBONY ASY OF CONANGA

CONNELLY DEEP CANYON 454  
**DAM: EBONISTA OF CONANGA 471**  
 EBONISA OF CONANGA 5468

BW	Adj. 205D wt	205 Index	Adj. 365D wt	365D Index
73	752	N/A	1341	N/A

### 2014 EPD'S

BW	+0.8
WW	+65
YW	+119
Milk	+44
TM	+77

- Sires attractive functional cattle with muscle, power and performance
- First calf heifers are very complete phenotypically and very long bodied
- Will add vigor to calf crop and explosive growth at an early stage
- Maternal pedigree



REFERENCE SIREs



### TED FINAL PRODUCT 8A TED 8A ~ 1750868 ~ 1/4/2013

CONNEALY PRODUCT 568  
Sire: **CONNEALY FINAL PRODUCT 7212**  
EBONISTA OF CONANGA 471

LOMA LANES VIKING 90J  
Dam: **SANDUNE 'S ERROLLINE 101M**  
SANDUNE 'S ERROLLINE 129D

GAR RETAIL PRODUCT  
PRIDE FINE OF CONANGA 566  
CONNEALY DEEP CANYON 454  
EBONISA OF CONANGA 5469  
VIKING CRACKER JACK 153F  
LOMA LANES BARDELLA 90W  
LOMA LANES ADEN 87B  
SOUTHOLM ERROLLINE 129W

'14 EPD'S
BW +4.1
WW +44
YW +79
Milk +30
TM +52

AOD	BW	WW	205D	ADG	365D	ADG (Lifetime)	MARB	REA	CWT
11	99	918	743	3.14	1151	3.01	+1.0	+22	+8

**8A** Product Son out of a elite cow that never misses. Will add pounds and be a superb cow maker



### TED FINAL PRODUCT 9A TED 9A ~ 1750870 ~ 1/7/2013

CONNEALY PRODUCT 568  
Sire: **CONNEALY FINAL PRODUCT 7212**  
EBONISTA OF CONANGA 471

S A V FINAL ANSWER 0035  
Dam: **TED FINAL ANSWER 10Y**  
SANDUNE 'S ERROLLINE 101M

GAR RETAIL PRODUCT  
PRIDE FINE OF CONANGA 566  
CONNEALY DEEP CANYON 454  
EBONISA OF CONANGA 5469  
SITZ TRAVELER 8180  
S A V EMULOUS 8145  
LOMA LANES VIKING 90J  
SANDUNE 'S ERROLLINE 129D

'14 EPD'S
BW +2.7
WW +60
YW +102
Milk +34
TM +64

AOD	BW	WW	205D	ADG	365D	ADG (Lifetime)
2	88	933	806	3.50	1360	3.30

**9A** A maternal bull with the ability to sire very good payweight and good yearling growth. Milk Epd in the top 10%. The Product daughters we've calved have exceptional udder quality.



### TED BRAND NAME 19A TED 19A ~ 1726605 ~ 1/10/2013

S A V BISMARK 5682  
Sire: **S A V BRAND NAME 9115**  
S A V BLACKCAP MAY 5530

BAD LANDS REVIVAL 5G  
Dam: **TED REVIVAL 113P**  
SANDUNE 'S ERROLLINE 101M

GAR GRID MAKER  
S A V ABIGALE 0451  
BCC BUSHWACKER 41-93  
S A V MAY 7238  
C H REVIVAL 104  
SOUTHERN HYALITE HEDY 35T  
LOMA LANES VIKING 90J  
SANDUNE 'S ERROLLINE 129D

'14 EPD'S
BW +4.1
WW +48
YW +80
Milk +20
TM +44

AOD	BW	WW	205D	ADG	365D	ADG (Lifetime)	MARB	REA	CWT
9	92	870	692	2.92	1303	3.37	-.11	+39	+11

**19A** A long bodied bull from a functional easy fleshing dam. If your looking to add length, take a look here.



### TED HARVESTOR 21A TED 21A ~ 1726604 ~ 1/10/2013

S A V HERITAGE 6295  
Sire: **S A V HARVESTOR 0338**  
S A V EMBLYNETT 7749

S A V BISMARK 5682  
Dam: **TED BISMARK 50Y**  
TED COMMANDER 26W

CAR DUKE 104  
S A V BLACKCAP MAY 4136  
S A V NET WORTH 4200  
SAV EMBLYNETT DIAMOND 6377  
GAR GRID MAKER  
S A V ABIGALE 0451  
BORDER BUTTE COMMANDER 69'06  
TED STOCKMAN 157P

'14 EPD'S
BW +4.5
WW +70
YW +130
Milk +30
TM +65

AOD	BW	WW	205D	ADG	365D	ADG (Lifetime)
2	88	957	832	3.63	1385	3.27

**21A** A Harvestor Son that is sure to catch your eye when you enter the pen. Stylish with a square hip, expressive muscle shape and plenty of bone and substance. The Bismark dam is perfect uddered with exceptional feet and docility. The best young cow in our herd. You would have to see her to appreciate her. This bull will add raw pounds, but also produce females that will exceed expectations, guaranteed! **HERDSIRE PROSPECT**

# BLACK ANGUS

**29****29****TED NEW STANDARD 29A**

TED 29A ~ 1726607 ~ 1/11/2013

BON VIEW NEW DESIGN 1407  
**Sire: LCC NEW STANDARD**  
 LCC SUNSET K3118

SAV NETWORK 4200  
**Dam: TED NETWORK 83Y**  
 TED OBJECTIVE 83U

B/R NEW DESIGN 036  
 BON VIEW PRIDE 664  
 WAR VENTURE 8030 6008  
 LEACHMAN SUNSET G3008  
 S A V 8180 TRAVELER 004  
 S A V MAY 2410  
 S S OBJECTIVE T510 OT26  
 TED GRID MAKER 63S

'14 EPD'S

BW +0.9

WW +57

YW +106

Milk +31

TM +60

AOD	BW	WW	205D	ADG	365D	ADG (Lifetime)
2	78	858	755	3.30	1200	2.86



GRP

**29A** A moderate framed, stout made bull that gets thickness from both sides of the pedigree. Beautiful uddered Network dam. A rare combination of calving ease, muscle and growth.

**31A** A feminine smooth fronted calf with loads of volume and rib. Will add a lot of vigor to a calf crop. Maternally charged pedigree with Weaning, Yearling, Milk and Total Maternal all in the top 1% of the breed. A bull that could breed heifers and slide nicely into the cow herd as he matures. Weaning Index 115

**31****TED FINAL PRODUCT 31A**

TED 31A ~ 1750873 ~ 1/11/2013

CONNEALY PRODUCT 568  
**Sire: CONNEALY FINAL PRODUCT 7212**  
 EBONISTA OF CONNANGA 471

SAV BISMARK 5682  
**Dam: TED BISMARK 58Y**  
 TED IN FOCUS 16W

G A R RETAIL PRODUCT  
 PRIDE FINE OF CANNANGA 566  
 CONNEALY DEEP CANYON 454  
 EBONISA OF CANNANGA 5469  
 G A R RID MAKER  
 S A V ABIGALE 0451  
 MYTTY IN FOCUS  
 VWB PRIDE LADY 124T

'14 EPD'S

BW +0.6

WW +64

YW +111

Milk +37

TM +69

AOD	BW	WW	205D	ADG	365D	ADG (Lifetime)
2	80	930	812	3.57	1358	3.31



GRP

**31****BLACK ANGUS**



### TED NEW STANDARD 54A

TED 54A ~ 1726622 ~ 1/16/2013

'14 EPD'S

BW+0.7

WW +63

YW+109

Milk+29

TM +61

BON VIEW NEW DESIGN 1407  
Sire: **LCC NEW STANDARD**  
LCC SUNSET K3118

B/R NEW DESIGN 036  
BON VIEW PRIDE 664  
WAR VENTURE 8030 6008  
LEACHMAN SUNSET G3008  
SITZ TRAVELER 8180  
S A V EMULOUS 8145  
G A R GRID MAKER

S A V FINAL ANSWER 0035  
Dam: **TED FINAL ANSWER 67Y**  
TED GRID MAKER 63S

AOD	BW	WW	205D	ADG	365D	ADG (Lifetime)
2	73	850	746	2.98	1279	3.16

**54A** -Caving Ease, predictability and high efficiency  
-Calf vigor  
-Stout and hairy  
-Standard Sons sold in 2013 to Darrus Sturtevant, Grant Daines, John Althen



### TED BRAND NAME 58A

TED 58A ~ 1726627 ~ 1/17/2013

'14 EPD'S

BW +5.0

WW +55

YW +94

Milk +25

TM +53

S A V BISMARCK 5682  
Sire: **S A V BRAND NAME 9115**  
S A V BLACKCAP MAY 5530

G A R GRID MAKER  
S A V ABIGALE 0451  
B C C BUSHWACKER 41-93  
S A V MAY 7238  
B/R NEEW DESIGN 036  
WHITE FENCE PRIDE H1  
SOUTHERN OLYMPIEAN 40D  
SOUTHERN ERICA 26E

B/R NEW FRONTIER 095  
Dam: **SOUTHERN ERICA 53S**  
SOUTHERN ERICA 4H

AOD	BW	WW	205D	ADG	365D	ADG (Lifetime)
7	102	980	797	3.39	1409	3.61

**58A** -Mammoth growth  
-Loads of width, volume, and muscle  
-Packed with meat that will add big time payweight  
-YI:119 WI:109



### TED BRAND NAME 60A

TED 60A ~ 1750883 ~ 1/17/2013

'14 EPD'S

BW +2.9

WW +44

YW +81

Milk +24

TM +46

S A V BISMARCK 5682  
Sire: **S A V BRAND NAME 9115**  
S A V BLACKCAP MAY 5530

G A R GRID MAKER  
S A V ABIGALE 0451  
B C C BUSHWACKER 41-93  
S A V MAY 7238  
S V F BANDOLIER  
BOYD FOREVER LADY 7122  
LONE STAR UPPERCUT 7L  
LONE STAR ELMARETTA 11G

S A V BANDOLIER 1916  
Dam: **LONE STAR ELMARETTA 6S**  
WETTOWN ELLM ARETTA 1P

AOD	BW	WW	205D	ADG	365D	ADG (Lifetime)	MARB	REA	CWT
7	85	754	615	2.58	1177	3.05	+11	+62	+28

**60A** -Long bodied, moderate framed  
-Exceptional maternal dam, with high efficiency



### TED HARVESTOR 72A

TED 72A ~ 1726634 ~ 1/19/2013

'14 EPD'S

BW +5.7

WW +59

YW+117

Milk +29

TM +59

S A V HERITAGE 6295  
Sire: **S A V HARVESTOR 0338**  
S A V EMBLYNETTE 7749

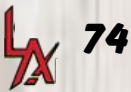
CAR DUKE 104  
S A V BLACKCAP MAY 4136  
S A V NET WORTH 4200  
S A V EMBLYNETTE DIAMOND 6377  
SITZ TRAVELER 8180  
SITZ BARBARAMERE JET 2698  
NICHOLS EXTRA H6  
MVF HI LITE 32M

SITZ ALLIANCE 6595  
Dam: **TED SITZ ALLIANCE 151S**  
TED EXTRA H6 95P

AOD	BW	WW	205D	ADG	365D	ADG (Lifetime)	MARB	REA	CWT
7	96	904	741	3.14	1219	3.07	+47	+23	+51

**72A** Another power packed Harvestor Son with a moderate frame, but packs as much volume, substance and muscle as any in the sale. A moderate easy fleshing dam that never misses. If ever you need a bull to sire feeder cattle that grow, this would be the one. Yearling Epd in the top 1%





### TED HARVESTOR 74A

TED 74A ~ 1726633 ~ 1/19/2013

S A V HERITAGE 6295  
Sire: **S A V HARVESTOR 0338**  
S A V EMBLYNETTE 7749

BASIN MAX 602C  
Dam: **TED 602C 11S**  
SANDUNE 'S ERROLLINE 101M

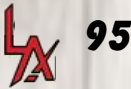
CAR DUKE 104  
S A V BLACKCAP MAY 4136  
S A V NET WORTH 4200  
S A V EMBLYNETT DIAMOND 6377  
G T MAXIMUM  
BASIN ELINE ERICA 315U  
LOMA LANES VIKING 90J  
SANDUNE 'S ERROLLINE 129D

'14 EPD'S
BW +6.2
WW +38
YW +89
Milk +23
TM +42

AOD	BW	WW	205D	ADG	365D	ADG (Lifetime)
7	100	680	563	2.26	1147	2.95

**74A** -Beautiful thickness, big topped with complete substance  
- Good all around raw bull that will throw big broody females

**88A** A thick topped beef bull. Incredibly deep and wide. He will add pounds and profit into every calf he sires. Loaded with meat and muscle from front to back and powerfully built through his rump and hind quarters. These are the kind of bulls that every rancher is looking for. WI:112



### TED FINAL PRODUCT 95A

TED 95A ~ 1750877 ~ 1/24/2013

CONEALY PRODUCT 568  
Sire: **CONNELLY FINAL PRODUCT 7212**  
EBONISA OF CONANGA 471

SITZ ALLIANCE 6595  
Dam: **TED SITZ ALLIANCE 98T**  
BAR MM JANE 9M

GAR RETAIL PRODUCT  
PRIDE FINE OF CONANGA 566  
CONNELLY DEEP CANYON 454  
EBONISA OF CONANGA 5469  
SITZ TRAVELER 8180  
SITZ BARBARAMERE JET 2698  
CRESCENT CREEK CHIEF 43J  
BAR DOUBLE M JANE 35H

'14 EPD'S
BW +2.0
WW +58
YW+103
Milk +31
TM +60

AOD	BW	WW	205D	ADG	365D	ADG (Lifetime)	MARB	REA	CWT
6	88	936	778	3.37	1290	3.28	+35	+32	+24



GRP

**95A** Power bull that is a favorite of everybody that sees him. Beautiful power cow that always brings home a big strong calf. This bull has as much profit potential for whoever takes him home as any in the sale. He's long, deep, docile, and powerfully built through his rump and hind quarters. Half brother sold to Peter Heins and Sons in 2013. WI: 108



### TED BRAND NAME 88A

TED 88A ~ 1726642 ~ 1/23/2013

S A V BISMARCK 5682  
Sire: **S A V BRAND NAME 9115**  
S A V BLACKCAP MAY 5530

MYTTY IN FOCUS  
Dam: **TED IN FOCUS 16W**  
VWB PRIDE LADY 124T

G A R GRID MAKER  
S A V ABIGALE 0451  
B C C BUSHWACKER 41-93  
S A V MAY 7238  
S A F FOCUS OF E R  
MYTTY COUNTESS 906  
RAINBOW HILLS PRIME CUT 114P  
PRIDE LADY OF RAINBOW HILLS 1N

'14 EPD'S
BW +2.0
WW +65
YW+105
Milk +28
TM +61

AOD	BW	WW	205D	ADG	365D	ADG (Lifetime)
4	88	950	802	3.49	1226	3.03



BLACK ANGUS

# PERFORMANCE DATA

# TERMS & CONDITIONS

## Average EPD's for all Red Calves born in 2013

BW	WW	YW	Milk	Total Maternal	MARB	REA	FAT
-0.6	+47	+73	+16	+39	+0.29	+0.05	-0.12

## Average EPD's for all Black Calves born in 2013

BW	WW	YW	Milk	Total Maternal	MARB	REA	FAT
+2.7	+43	+73	+19	+41	+0.31	+0.23	+0.10

**EPD:** Expected Progeny Difference is the prediction of how progeny of each animal are expected to perform relative to the progeny of other animals in the Angus breed. As data continues to accumulate, accuracy levels rise and EPD's can shift accordingly.

**BW:** Birth weight is related to calving ease. Lower birth weights tend to reduce the incidence of calving difficulties. Lower birth weight EPD is more desirable for heifers.

**WW:** Weaning Weight is an indicator of growth from birth to weaning (205 days of age). During this period, the calf's growth is influenced by its mother's ability to produce milk and its own ability to grow.

**YW:** Yearling Weight is an indicator of growth from birth to yearling (365 days of age). The calf's growth during this period is influenced by its own ability to grow plus its mother's maternal abilities. It is the best estimate for total growth.

**Milk:** Milk EPD reflects the milking ability of a sire's daughters expressed in pounds of calf weaned.

**TM:** The Total Maternal EPD predicts the difference in weaning weight of the sire's daughter's progeny due to the combination of growth genetics and milking ability. It is equal to one-half of the weaning weight EPD plus the milk EPD.

## — CARCASS EPD —

**MARB:** (%IMF) Marbling EPD is a predictor of the level of intramuscular fat and is derived using CUP ultrasound data and actual carcass data. Marbling determines quality grade.

**REA:** (Ribeye Area) Ribeye area is expressed in inches<sup>2</sup> and is a predictor of the area of ribeye muscle at the 12th/13th rib.

**CWT:** Is a predictor of transmitting ability for hot carcass weight.

## ACTUAL WEIGHTS

Actual weights to be taken March 18, 2014. These will be available, along with scrotal measurements and carcass data, as a supplementary sheet on sale day.

**TERMS** - The terms of the sale are cash or cheque payable at par to Balog Auction Services Ltd., Lethbridge, Alta. The right of property shall not pass until settlement is made. All settlements must be made with the clerks of the sale before any cattle will be released.

**BIDS** - Every animal entering the sale ring will be sold to the highest bidder. A floor price will apply to each animal consigned.

**DISPUTES** - In case of disputes, bidding will be reopened between parties involved. If no further bid is made, the buyer will be the person from whom the auctioneer accepted the last bid. The auctioneer's decision in such matters will be final.

**PURCHASER'S RISK** - Each animal becomes the risk of the purchaser as soon as sold.

**ANNOUNCEMENTS** - Errors discovered in the catalogue will be corrected by announcements from the Auction Stand at sale time and such corrections will take precedence over the printed matter in the catalogue.

**CERTIFICATE OF REGISTRY** - A certificate of registry duly transferred will be furnished to the buyer for each animal after the settlement is made.

**SHIPPING** - Assistance will be given in making shipment after the sale, but Balog Auction Services Ltd., or the seller assumes no risk. Expenses incurred are the responsibility of the purchaser. Purchasers are requested to furnish shipping instructions when making settlement. Any additional expenses are the responsibility of the buyer, including duty, brokerage fees, etc.

**ACCIDENTS** - Although every precaution will be taken to protect the safety and comfort of buyers, neither the sales manager, auctioneer nor the owner assumes any responsibility in this matter and disclaims any liability, legal or otherwise, in the event of accident or loss of property.

**LIABILITY** - Balog Auction Services Ltd. are acting as agents only and assume no responsibility for representations by the seller. Purchasers must look to the seller for fulfillment of all guarantees and representations made hereunder.

## FUSOGARD VACCINE

All sale bulls have been vaccinated with Fusogard as an aid in the reduction of footrot, on February 8, 2014 and given a booster shot on February 28, 2014. Fusogard is an alternative for natural and organic beef producers because it's not an antibiotic. It is recommended to revaccinate annually as a preventative against signs of footrot. All bulls are on the Pfizer Gold Program.



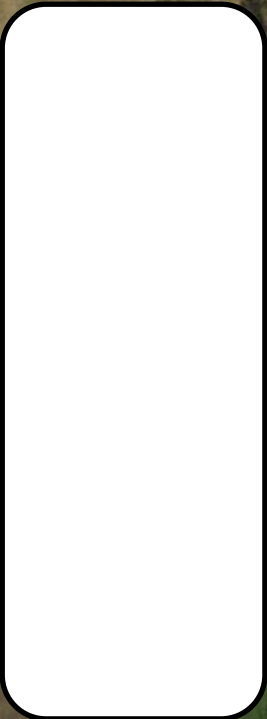
Leeuwenburgh Angus  
Box 25  
Lethbridge, AB  
T1J 3Y3

*Thank You to all of our valued Customers  
who have supported our program to date!*

- Don Althen
- John Balderson\*
- Count Ridge Stock Farm\*
- Jeff Belisle\*
- CCRA Ranching\*
- Don Carlson
- Grant Daines
- Ewelme Farming Co. Ltd\*
- Hicken Ranch\*
- Peter Heins & Sons Ltd\*
- Keho Lake Colony\*
- John Mazutinec\*
- Gordon Wudrich\*
- Rocking P Ranch
- Ricke Strate\*
- Richard Thacker
- Lourens Vanessen\*
- Kay Wynder
- Fath Farms\*
- Jerry Frey
- Hays Stock Grazing
- Park Livestock Ltd.
- Greg Romeril\*
- Schuld Farms\*
- John Hofer\*
- Nevin Heidinger
- Darrus Strutevant\*
- Ivan Locke
- Mayfield Colny
- Wolf Creek Colony\*
- John Moens
- Andy Quiring\*
- Brenda Sanders\*
- Doug Hansen
- Joe Horvath
- Parker Morrison
- Melissa Mallcus
- John Althen
- Ken Benson\*
- Gloria Blades\*
- T.L. Cattle Co.\*
- Cattle Creek Ranching
- ML Angus
- Ober Bros. Farming Ltd.
- Les Obbagy\*
- Monique Slingerland\*
- Remington Land & Cattle
- Sean Coppieters\*
- Rosedale Colony\*
- Raymond Speaker\*
- Brian Harbours\*
- Brian Mckimmon
- Henry Van Heerden
- Conrad VanHeerden
- Merlin Huber\*

*\*Repeat Buyers*

23<sup>RD</sup> ANNUAL BULL SALE  
TUESDAY, MARCH 18, 2014  
1:00 PM - BALOG AUCTION  
LETHBRIDGE, ALBERTA



PLEASE BRING THIS CATALOGUE TO THE SALE