



33rd Annual

B U L L S A L E

MARCH 12 • 2024

BALOG AUCTION | LETHBRIDGE, AB | 1:00PM

Also Featuring Select Females

33rd Annual BULL SALE MARCH 12 • 2024

BALOG AUCTION | LETHBRIDGE, AB | 1:00PM

Also Featuring Select Females

SALE DAY PHONES

BALOG AUCTION (403) 320-1980
DENNIS LEEUWENBURGH (403) 308-3003
JOHNNY LEEUWENBURGH (403) 382-1794
JACK LEEUWENBURGH (403) 330-6123

SALE STAFF

AUCTIONEER

BOB BALOG

RING STAFF

LOUIS BALOG (403) 331-0611
BRAD BALOG (403) 642-7444
MARK LENZ (403) 330-7600

CASTLE ROCK MARKETING

SHANE CASTLE (306) 741-7485
DEVIN WARRILOW (780) 581-4329
MARK FORSYTH (306) 784-7844

DELIVERY - \$100 CREDIT IF BULL IS TAKEN HOME SALE DAY

Assistance will be given in making delivery after the sale.

PRE-SALE LUNCH

Join us for lunch at 11:30am Sale Day

INSURANCE

Available at Balog Auction Services - Maureen- 403-320-1980
We strongly suggest you insure your bull purchases.

ACCOMMODATIONS in Lethbridge, less than a 10 minute drive

Hampton Inn & Suites by Hilton (403) 942-2142
Best Western Plus Service Inn & Suites (403) 329-6844
Quality Inn & Suites (403) 331-6440
Fairfield Inn & Suites by Marriott (587) 425-0388

Internet Bidding Available

D | L | M | S
www.dlms.ca

Bull videos available online at cattlevids.ca

VISIT US ONLINE AT
www.leeuwenburghangus.com

CATALOGUE INFORMATION

Cattle will sell under the standard terms and conditions put forward from the breed association and Balog Auction. These are available upon request.

ALL BULLS ARE FULLY TESTED AND 100% GUARANTEED NO BULLS SOLD PRIOR TO THE SALE!

Everything possible will be done to assure that every bull in this sale will be a breeder. Dr. Storm Bartshoff will scrotal measure and physically evaluate every bull. Any animal that has not proven itself within 6 months of sale, (September 30, 2024 if in healthy condition, may be returned to the seller at the buyer's expense. The seller reserves the privilege of trying for a 6-month period to prove the animal a breeder. The seller at his option may either return the purchase price or replace the animal with another of equal quality in full settlement and satisfaction of all claims. Any complaints regarding any animal in this sale shall be made to the breeder. All complaints must be reported in writing by the buyer to the seller within 6 months and any animal returned must be free of disease and in good health.

CATALOGUE INFORMATION

All information is up to date as of publication date. Pedigree's and EPD's are supplied by the Canadian Angus Association, and all other information has been supplied by the seller. Information in this catalogue is believed to be accurate, but any errors discovered in the catalogue, will be corrected by announcements, from the auction stand at sale time, and such corrections will take precedence over the printed matter in this document.

IN-HERD SEMENT INTEREST

Leeuwenburgh Angus reserves the right to draw semen on any bull sold at the buyer's convenience and our cost.

It as always great to be working with the great folks at Leeuwenburgh Angus, a large family run operation involved in all aspects of Agriculture. A family committed to doing their very best possible in whatever way they are involved in. With no fear of work their successes are brought on by their customer support backed by integrity and honesty as the backbone to it all.

Passion accurately describes the breeding program in fine tuning the genetics set forth on a regular basis. Not looking for outliers rather the consistency and predictability that is needed for any seedstock operation. The focus on making sure the female end of things is at the top of the checklist when touring the herd will come up in conversation repeatedly. This is not for posture, rather the spirit which drives them on a daily basis.

The pen of bulls presented to you comes highly regarded from the repeat buyers and their pride in their seedstock supplier. The bulls in the pen come sound and stout with the basic attributes that are needed to remain competitive in the commercial marketplace. Take the time for a farm visit if you haven't yet to see the program at work along with its many facets involved, you will not be disappointed.

If we at Castlerock can be of service feel welcome to reach out to us as we are here to help.

See you sale day!

Shane Castle

Shane Castle | Castlerock Marketing

WELCOME FELLOW CATTLEMEN! TO THE LEEUWENBURGH 33RD ANNUAL BULL SALE!

Finally, the cattle industry has graduated to the level we have all needed and have been waiting for! The Leeuwenburgh program has been a leader for years and years!

TOP PROVEN GENETICS, TOP PERFORMANCE NUMBERS AND A STRONG EMPHASIS ON CALVINS EASE AND MILK EPD'S, REPEAT BUYERS ARE THE BACK BONE OF A SUCCESSFUL PROGRAM AND ONCE AGAIN LEEUWENBURGH BULLS ARE THE LEADERS.

The selection criteria for every program will be more important in the next few years than ever before. Once again, the Leeuwenburgh's are at the head of the pack!

Come to the sale and buy into the strongest program and genetics in the industry! See you at the Sale!

See you sale day!

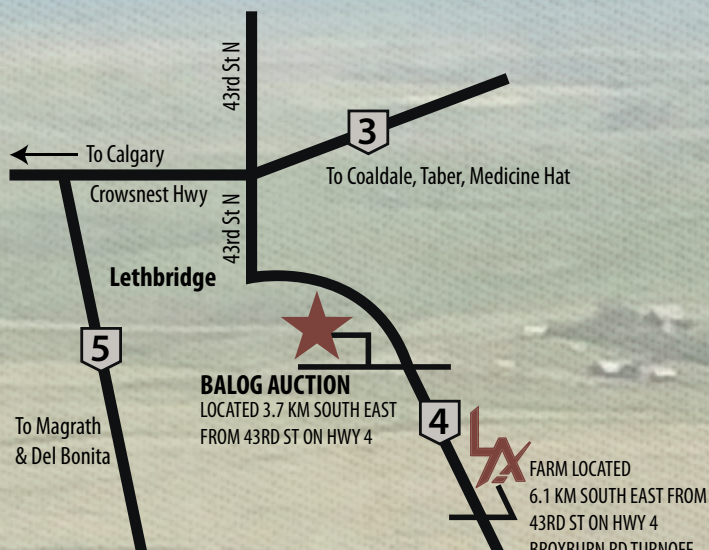
Bob Balog

R.C.(Bob) Balog | Balog Auction

Welcome to our Sale

Welcome to our 33rd Annual bull Sale. First off, a huge thanks to those that supported us last year and continue to use Leeuwenburgh genetics, it's humbling and not something we take for granted. It's hard to believe that it's time again to begin another bull sale season and that another year is behind us. For us and many of you, dry conditions sure made things challenging but as I write this, we just started to feed our cows, which is something I'd never thought would happen, if you asked me in August our grass was starting to look like the desert. Very thankful for the fall moisture and the fact we were able to stubble graze right into Christmas. Also, the fact that the cattle prices were quite strong throughout the year sure injected some much needed relief and optimism. That being said about twenty years ago we made a tough decision and tried to reinvent our cowherd somewhat by only selecting genetics that we thought would be able to not only survive these pockets of dry years but actually perform under these conditions. This made for a lot of culling of the mainstream genetics at the time and we adjusted our focus to feed efficiency, fertility, maternal traits and leg and foot structure. We also started to finish our own commercial calves, this really opened our eyes to what is needed in bulls that go out and work at a commercial operation. Cattle need to go out and grow on grass but equally important, in order to market your calves successfully to a feedlot operation your calves need to gain on feed. Time and time again you see at the auctions the progressive cowherds get paid more than the average ones because historically their cattle gain significantly more in the feedlot and ultimately harvest a bigger carcass. We strongly feel our bulls and cowherd can deliver in this regard. Our cowherd is not the biggest in the nation, but it's been close to 40 years in the slow cooker, and you can be assured it works its tail off and is potent. No free passes on udder quality and feet as many of you already know. We are very thankful for the repeat customers and friends we have in the business and the trust they have put in our program. We are forever grateful and do not take this for granted. Our bull pen this year is as solid as it's ever been, and we are quite excited to see the uniformity and quality of the group. Herd bulls like Slowburn 102H has a great set of sons that are even better than last year and Mclovin 757E is as popular as ever now that his daughters are absolutely crushing it in there first years of production. Our high selling Adrenaline 28J is doing what we thought he would as well, the black division is the best we've ever had thanks to an old 91S donor cow you'll have to ask Warrilow about and the acquisition of the herdsire Eastondale Triggs 98J. His consistency in the bull pen and heifer pen alike are quite impressive. Please feel free to call anytime or better yet come on out to the farm to see for yourselves. See you all soon.

Dennis Leeuwenburgh



WILLARD, GERARDA, JACK



DENNIS, MICHELLE & THE KIDS



JOHNNY, JEN & THE KIDS



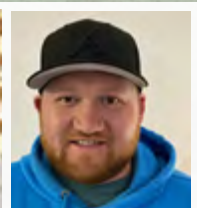
CHARLES, LORI & THE KIDS



DALE WEIR



ERIC VANDER VEEN



JORDAN LEUSINK

In Appreciation

Thanks Dale, Eric and Jordan for all your help and effort throughout the year!



REF
SIRE **A**

RED LWNBRG ADRENALINE 28J

SIRE OF LOTS 1 TO 10



TED 28J

TED 28J • 2230626 • JANUARY 06

RED ANDRAS FUSION R236
RED LWNBRG ELECTRIC 4D
RED LWNBRG SCARLET 62Z

ANDRAS IN FOCUS B175
RED ANDRAS BELLE B167
RED LAZY MC COWBOY CUT 26U
RED TED GRAND CANYON 144R

RED LWNBRG ROLLIN DEEP 90B
RED LWNBRG CROSS OVER 150D
RED TED ROMEO 149S OSC

RED BIEBER ROLLIN DEEP Y118
RED TED KINCHEN SAGEBRUSH 74R
RED BUF CRK ROMEO L081
RED TED HOLDEN HI HO 52N

PERF DATA	
BW	84
WW	891
205D	850
365D	1174

EPDS	BW: 1.9	WW: 72	YW: 119	M: 33	MARB: -0.11	REA 0.84	CWT: 59
	% 61	1	1	2	98	1	1

OWNED WITH MATEJKA FARMS, DERSTA FARMS, ERIC & LOUISE FALK

1



RED LWNBRG RESTLESS 100L

TED 100L • 2329396 • JANUARY 18 2023



TED 41E

HARVESTOR 154A

RED LWNBRG ELECTRIC 4D
RED LWNBRG ADRENALINE 28J
RED LWNBRG CROSS OVER 150D

RED ANDRAS FUSION R236
RED LWNBRG SCARLET 62Z
RED LWNBRG ROLLIN DEEP 90B
RED TED ROMEO 149S

RED LWNBRG HARVESTOR 41E
RED LWNBRG ESSENCE 115J
RED LWNBRG PEACEMAKER 30B

TED HARVESTOR 154A
RED TED KARWEIK 74T
RED GMRA PEACEMAKER 1216
RED TED SAKIC 27Z

PERF DATA	
BW	956
WW	77
205D	938
365D	1393

EPDS	BW: +2.2	WW: +77	YW: +127	M: +32	MARB:	REA	CWT:
	% 67	1	1	2	-	-	-

- A big time curve bending herd bull with blood red color, breed leading performance and cow making ability
- Rugged, powerfully built beef bull with loads of muscle, massive volume and added dimension
- The #1 ranked bull of his calf crop for weaning
- Top 1% of the breed for weaning and yearling
- Heavy milking cow family with high end fertility, consistency and fleshing ability
- The 41E daughters have exceptional udder quality, and have matured into some of our best cows
- CAA Elite grand dam 30B, and great grand dam is still going strong at 14 years of age and has the outcross herd bull POE 17L in this years offering
- RETAINING IN HERD SEMEN INTEREST

2

**RED LWNBRG ADRENALINE 31L**

TED 31L · 2335644 · January 11 2023

RED LWNBRG ELECTRIC 4D
RED LWNBRG ADRENALINE 28J
 RED LWNBRG CROSS OVER 150D

RED ANDRAS FUSION R236
 RED LWNBRG SCARLET 62Z
 RED LWNBRG ROLLIN DEEP 90B
 RED TED ROMEO 149S OSC

PERF DATA	
BW	94
WW	864
205D	837
365D	1380

RED T-K HIGH PRESSURE 148F
RED LWNBRG MISS RAMBO 185J
 RED LWNBRG AUTOMATIC 157G

RED T-K COBRA 34B
 RED T-K MISS RAMBO 69C
 RED BRYLOR AUTOMATIC 95B
 RED LWNBRG FUSION 5D

EPDS	BW: +4.8	WW: +74	YW: +128	M: +29	MARB:	REA	CWT:
%	96	1	1	9	-	-	-

- This guy will raise the performance bar as high as any in the offering.
- A thick heavy muscled beef bull with extra volume and length, his calves will push the scales down hard and will excel on feed
- Top 1% of the breed for weaning and yearling
- Potent cow family, Grandam 157G is a donor quality cow and great grandam 5D has done nothing but produce, with sons at Right Cross Ranch, Bar 4 Bar Ranch, Grunigers and a stud red carrier POE 234G in this years offering, her latest daughter was selected by Wood Coulee and Cockburn as pick of the bred heifers

3

**RED LWNBRG ADRENALINE 62L**

TED 62L · 2335679 · January 15 2023

RED LWNBRG ELECTRIC 4D
RED LWNBRG ADRENALINE 28J
 RED LWNBRG CROSS OVER 150D

RED ANDRAS FUSION R236
 RED LWNBRG SCARLET 62Z
 RED LWNBRG ROLLIN DEEP 90B
 RED TED ROMEO 149S

PERF DATA	
BW	80
WW	774
205D	693
365D	1151

RED TED CATALYST30Y
RED LWNBRG CATALYST 68B
 RED TED MAKE MY DAY 161R

RED TED CATALYST 107T
 RED TED HOLDEN HI HO 52N
 RED BJR MAKE MY DAY 981
 RED TED SPECIAL 25K

EPDS	BW: -0.1	WW: +53	YW: +93	M: +28	MARB: +0.04	REA +0.67	CWT: +45
%	25	14	12	14	86	4	5

- A super balanced bull with capacity, depth, softness and authentic angus qualities.
- A multi trait Adrenaline son that is easy to find in the pen and would work on heifers and fill the replacement pen
- Maternal cow power built in, dam is heavy milking and as consistent a cow as we own with 105 wean ratio on 11 natural calves
- Maternal brothers working at Powder Creek, Mayfield Colony, Keho Colony, and B&J Schneider Ranching

4

**RED LWNBRG ADRENALINE 216L**

TED 216L · 2315807 · February 15 2023

RED LWNBRG ELECTRIC 4D
RED LWNBRG ADRENALINE 28J
 RED LWNBRG CROSS OVER 150D

RED ANDRAS FUSION R236
 RED LWNBRG SCARLET 62Z
 RED LWNBRG ROLLIN DEEP 90B
 RED TED ROMEO 149S

PERF DATA	
BW	99
WW	670
205D	681
365D	1184

TED HARVESTOR 154A
LWNBRG HARVESTOR 79C
 RED TED MAKE MY DAY 161R

S A V HARVESTOR 0338
 RED LWNBRG ANISTON 137S
 RED BJR MAKE MY DAY 981
 RED TED SPECIAL 25K

EPDS	BW: +3.4	WW: +56	YW: +103	M: +25	MARB: +0.01	REA +0.68	CWT: +48
%	86	9	4	42	90	4	3

- Elite cow family that does nothing but produce pounds
- Real world ranch cows behind this guy that are models of efficiency and consistency
- One of the youngest bulls in the offering with maternal brothers selling to Pelleboer Farms, Mayfield Colony and Crescent Hill Farms



GRANDAM AUTOMATIC 157G

**MATERNAL BROTHERS**

FUSION 1D



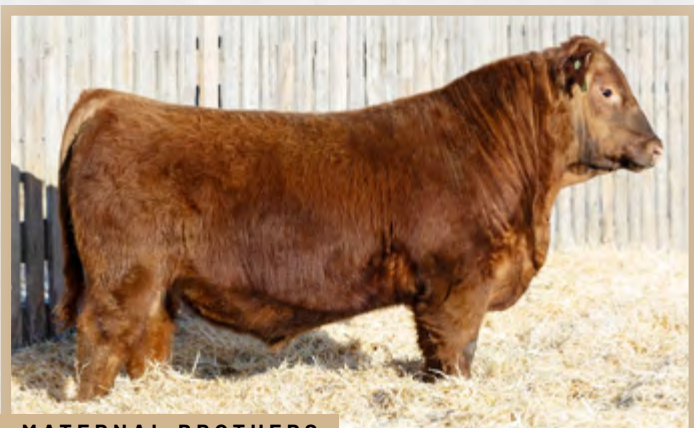
FUSION 2D



VOLTAGE 154F



FIRST CLASS 2H

**MATERNAL BROTHERS**

WESTWARD 104H



FIRST DOWN 50F



HIGH PRESSURE 163J

5



RED LWNBRG ADRENALINE 160L

TED 160L • 2315776 • JANUARY 28 2023



RED LWNBRG ELECTRIC 4D
RED LWNBRG ADRENALINE 28J
RED LWNBRG CROSS OVER 150D

RED T-K HIGH PRESSURE 148F
RED LWNBRG MISS RAMBO 111J
RED LWNBRG FIRST DOWN 16F

RED ANDRAS FUSION R236
RED LWNBRG SCARLET 62Z
RED LWNBRG ROLLIN DEEP 90B
RED TED ROMEO 149S

RED T-K COBRA 34B
RED T-K MISS RAMBO 69C
RED BAR-E-L FIRST DOWN 161D
RED LWNBRG ROLLIN DEEP 25C

PERF DATA	
BW	78
WW	770
205D	800
365D	1185

EPDS	BW: +0.2	WW: +59	YW: +89	M: +30	MARB:	REA	CWT:
%	30	5	17	5	-	-	-

- High quality calving ease option
- Heavy milk on the maternal side, moderate tanky females anchored by donor cow 25C who is CAA Premier and has sons working at Wolfcreek, McGowan's, M Bar Ranch and Gouw's
- High IQ, low maintenance cow maker



6



RED LWNBRG ADRENALINE 66L

TED 66L • 2320797 • January 16 2023

RED LWNBRG ELECTRIC 4D
RED LWNBRG ADRENALINE 28J
RED LWNBRG CROSS OVER 150D

RED LWNBRG QUADTRAC 61F
RED LWNBRG CHATEAU 79J
RED TED GOLDEN BOY 119Y

RED ANDRAS FUSION R236
RED LWNBRG SCARLET 62Z
RED LWNBRG ROLLIN DEEP 90B
RED TED ROMEO 149S

RED LWNBRG HARVESTOR 103C
RED LWNBRG CHATEAU 69B
RED BHR GOLDEN BOY 453B
RED TED GLACIER MARIAS 101L

PERF DATA	
BW	88
WW	824
205D	815
365D	1328

EPDS	BW: +4.3	WW: +68	YW: +118	M: +28	MARB: -	REA: -	CWT: -
%	94	1	1	14	-	-	-

- A stylish long bodied stud that is athletic and has been trying to breed cows since he was 3 months old
- Grass roots cow family that is the base of our cowherd
- Exceptional udder quality built in to go along with top 1% growth at both weaning and yearling

7 **RED LWNBRG ADRENALINE 63L**

TED 63L • 2315719 • January 15 2023

RED LWNBRG ELECTRIC 4D RED LWNBRG ADRENALINE 28J RED LWNBRG CROSS OVER 150D	RED ANDRAS FUSION R236 RED LWNBRG SCARLET 62Z RED LWNBRG ROLLIN DEEP 90B RED TED ROMEO 149S	PERF DATA
		BW 70
		WW 722
RED U2 BLUE COLLAR 295E RED LWNBRG ANEXA 174J RED LWNBRG FRONTIER 23E	RED U-2 RECKONING 149A RED U-2 ANEXA 439A RED LWNBRG FRONTIER 28C RED TED SAKI 16Y	205D 720
		365D 1134

EPDS	BW: +0.2	WW: +49	YW: +80	M: +27	MARB: -	REA -	CWT: -
%	30	25	34	21	-	-	-

- Sure fire calving ease
- Cow family is moderate but has exceptional milk, udder quality and fertility

9 **RED LWNBRG ADRENALINE 190L**

TED 190L • 2315798 • February 04 2023

RED LWNBRG ELECTRIC 4D RED LWNBRG ADRENALINE 28J RED LWNBRG CROSS OVER 150D	RED ANDRAS FUSION R236 RED LWNBRG SCARLET 62Z RED LWNBRG ROLLIN DEEP 90B RED TED ROMEO 149S	PERF DATA
		BW 77
		WW 740
RED LWNBRG HARVESTOR 103C RED LWNBRG HARVESTOR 105E RED LWNBRG KODIAK 35C	TED HARVESTOR 154A RED LWNBRG CADENCE 141Y RED BRYLOR RED KODIAK 3A RED XO CROWFOOT VERNICE 2453Z	205D 718
		365D 1035

EPDS	BW: -0.9	WW: +50	YW: +74	M: +26	MARB: -	REA -	CWT: -
%	15	22	48	30	80	17	14



TED 34H



SIXM 200K - DAUGHTER

RED LWNBRG HOT WIRE 34H SIRE OF LOT 11

OWNED WITH SIX MILE RED ANGUS

8 **RED LWNBRG ADRENALINE 94L**

TED 94L • 2315736 • January 18 2023

RED LWNBRG ELECTRIC 4D RED LWNBRG ADRENALINE 28J RED LWNBRG CROSS OVER 150D	RED ANDRAS FUSION R236 RED LWNBRG SCARLET 62Z RED LWNBRG ROLLIN DEEP 90B RED TED ROMEO 149S	PERF DATA
		BW 66
		WW 677
RED WHEEL MONOPOLY 85C RED LWNBRG BARBIE 82J RED LWNBRG FIRST DOWN	RED TER-RON MONOPOLY 84A BLACK WHEEL BARBIE 66A RED BAR-E-L FIRST DOWN 161D RED LWNBRG PEACEMAKER 96C	205D 687
		365D 1068

EPDS	BW: -0.9	WW: +47	YW: +80	M: +26	MARB: -	REA -	CWT: -
%	15	32	34	30	-	-	-

10 **RED LWNBRG ADRENALINE 239L**

TED 239L • 2315821 • February 27 2023

RED LWNBRG ELECTRIC 4D RED LWNBRG ADRENALINE 28J RED LWNBRG CROSS OVER 150D	RED ANDRAS FUSION R236 RED LWNBRG SCARLET 62Z RED LWNBRG ROLLIN DEEP 90B RED TED ROMEO 149S	PERF DATA
		BW 100
		WW 650
RED U-2 RENOWN 193C RED U2 BEAUTY 237E RED U2 BEAUTY 319W	RED U-2 RECKONING 149A RED U-2 ENVIOUS 147X RED U-2 BIG LEAGUE 544R RED FLYING K BEAUTY 11N	205D 697
		365D 1044

EPDS	BW: +4.2	WW: +51	YW: +81	M: +23
%	93	19	32	66
	MARB: -	REA -	CWT: -	
%	-	-	-	-



DAM U2 BEAUTY 237E

11 **RED LWNBRG HOT WIRE 33L**

TED 33L • 2315705 • January 11 2023

RED LWNBRG ELECTRIC 4D RED LWNBRG HOT WIRE 34H RED LWNBRG FLEX 85C	RED ANDRAS FUSION R236 RED LWNBRG SCARLET 62Z RED MRLA FLEX 49Z RED TED CATALYST 20Z	PERF DATA
		BW 84
		WW 919
RED BAR-E-L FIRST DOWN 161D RED LWNBRG FIRST DOWN 126F RED LWNBRG PEACEMAKER 109C	RED CROWFOOT 4ACES 2193Z RED BAR-E-L GLORIA 87R RED GMRA PEACEMAKER 1216 LWNBRG SILVER STAR REVA 122A	205D 809
		365D 1293

EPDS	BW: +0.0	WW: +54	YW: +94	M: +24	MARB: -	REA: -	CWT: -
%	27	12	11	54	-	-	-

- The only Hot Wire son in the offering, always a bull that stood out and caught your attention
- Super balanced, great spread from birth to yearling, 108 WI and 112 YI
- Sound from the ground up, long spined, stout and deep
- His dam is a world class First Down daughter with femininity, impeccable udder quality and great maternal instincts, she will be flushed this spring
- Couldn't recommend a better cow family in terms of fertility, easy fleshing and efficiency, grandam 109C is CAA Elite with a 106 ratio



PATERNAL BRO HOTWIRE 58K



RED LWNBRG ELECTRIC 4D

RED LWNBRG ELECTRIC 4D

SIRE OF LOT 12



12



RED LWNBRG ELECTRIC 23L

TED 23L · 2336029 · January 10 2023

RED ANDRAS FUSION R236
RED LWNBRG ELECTRIC 4D
RED LWNBRG SCARLET 62Z

ANDRAS IN FOCUS B175
RED ANDRAS BELLE B167
RED LAZY MC COWBOY CUT 26U
RED TED GRAND CANYON 144R

RED GLACIER CHATEAU 744
RED TED CHATEAU 6U
RED TED RAMBLER 52L

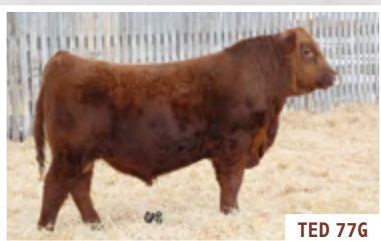
RED LMAN KING ROB 8621
RED GLACIER REBALA
RED BJR RAMBLER 5162
RED TED BEAU 109G

PERF DATA

BW	76
WW	830
205D	728
365D	1137

EPDS	BW: -0.8	WW: +54	YW: +95	M: +27	MARB: -0.02	REA +0.53	CWT: +39
%	18	12	10	30	91	15	10

- ET son of the Chateau 6U cow that was not our favourite colour of red but had deadly feet, a massive hip and is derived from grassroots genetics that flat out worked and produced in low inputs
- Combination of maternal and big time growth genetics
- Last Electric 4D son to offer, a bull that is a true curve bender, top of the breed calving ease and growth
- Brothers working Six Mile, Matejka's, Dersta's, Faulks, Baxter's, Lusts and KC Cattle



TED 77G

RED LWNBRG FIRESIDE 77G

SIRE OF LOT 13



13



RED LWNBRG FIRESIDE 27L

TED 27L · 2315700 · January 11 2023

RED ANDRAS FUSION R236
RED LWNBRG FIRESIDE 77G
RED LWNBRG PEACEMAKER 92B

ANDRAS IN FOCUS B175
RED ANDRAS BELLE B167
RED GMRA PEACEMAKER 1216
RED TED NEW TREND 108P

RED T-K IMPRINT 150D
RED LONE STONE BURGESS 18J
RED LONE STONE BURGESS

RED T-K COBRA 34B
RED CLAY INDIGO BABY 233U
RED MAF REALITY 28D
RED GLESBAR MISS BUR 61Y

PERF DATA

BW	85
WW	820
205D	797
365D	1313

EPDS	BW: +0.1	WW: +53	YW: +98	M: +27	MARB: -	REA: -	CWT: -
%	28	14	7	21	-	-	-

- This LWNBRG Fireside son came in dam from Lonestone Farms
- She set the bar pretty high for herself with this meat machine
- Moderate at birth with electric growth for a WI of 106 and a 119 YI ranking him 5th in the pen
- Money making growth and high end fertility to build a cowherd around

REF
SIRE**B****RED LWNBRG SLOWBURN 102H****SIRE OF LOTS 14 TO 26****RED ANGUS****TED 102H • 2169518 • JANUARY 30**

RED HOWE HESSTON 212C
RED U2 DOMINION
 RED U2 HIDEE HO 459D

RED U-2 RENOWN 193C
RED U2 FAVORITE 275F
 RED KBJ FAVORITE 931B

RED U6 HESSTON 14Z
 RED HOWE MS ARAB 170X
 RED HOWE MAGNUM 169W
 RED U-2 HIDEE HO 281Y

RED U-2 RECKONING 149A
 RED U-2 ENVIOUS 147X
 RED U-2 MAUI BUILT 38Y
 RED KBJ FAVORITE 888W

PERF DATA	
BW	79
WW	800
205D	840
365D	1378

EPDS	BW: +3.9	WW: +65	YW: +106	M: +22
	% 91	2	3	76
	MARB: +0.16	REA +0.48	CWT: +31	
	% 65	22	30	

**TED 102H YEARLING****TED 102H****14****RED LWNBRG INSTINCT 36L****TED 36L • 2315707 • JANUARY 12 2023**

RED U2 DOMINION AMF NHF
RED LWNBRG SLOWBURN 102H
 RED U2 FAVORITE 275F

RED TOPHAM MCLOVIN 757E
RED LWNBRG MS MADONA 33H
 RED LWNBRG CHATEAU 17B

RED HOWE HESSTON 212C
 RED U2 HIDEE HO 459D
 RED U-2 RENOWN 193C
 RED KBJ FAVORITE 931B

RED DWAJO SUNDANCE 114A
 RED TOPHAM MS MADONA 977W
 RED TED CHATEAU 142Y
 RED TED FRONTLINE 45W

PERF DATA	
BW	85
WW	918
205D	812
365D	1317

EPDS	BW: +2.6	WW: +58	YW: +97	M: +25	MARB:	REA	CWT:
	% 75	6	8	50	-	-	-

- A personal favorite with incredible phenotype, performance and maternal cow power
- In a league of his own for centre mass, rib shape and depth to go along with a massive top
- Massive chest floor, stands square and wide on all four corners
- Top of his class in performance with a WI of 108 and YI 117
- Will sire the type of highly fertile females that go out and graze in the harshest conditions, produce weight and will look great doing it
- Cow is a beauty, sporting udder and foot quality to go along with ample depth and softness
- Maternal side of the pedigree boasts 5 CAA Elite cows right up close and is anchored by red cow making legend Chateau 744
- RETAINING IN HERD SEMEN INTEREST

15



RED LWNBRG HURRICANE 59L

TED 59L • 2315717 • JANUARY 15 2023



RED U2 DOMINION AMF NHF
RED LWNBRG SLOWBURN 102H
RED U2 FAVORITE 275F

RED LWNBRG FIRST DOWN 45F
RED LWNBRG WANDER 90H
RED LWNBRG OUTSIDER 70E

RED HOWE HESSTON 212C
RED U2 HIDE HO 459D
RED U-2 RENOWN 193C
RED KBJ FAVORITE 931B

RED BAR-E-L FIRST DOWN 161D
RED TED PACKER 134A
RED SIX MILE OUTSIDER 387C
RED TED PACKER 117Z

PERF DATA	
BW	82
WW	868
205D	777
365D	1242

EPDS	BW: +1.5	WW: +53	YW: +90	M: +21	MARB: +0.12	REA: +0.39	CWT: +25
%	55	15	15	85	75	45	50

- Stunning herd bull with length, muscle and style
- Superior shape and substance to go along with authentic angus character and phenotype
- Hard to fault from any angle, an early favourite from a young age
- WI 104 and YI 107
- Dam is model angus cow, with beautiful body type, her first daughter is a stunner
- Outcross cow family featuring, Kodiak, SAV Bismarck and Eliminator



MATERNAL BROTHER
FUGITIVE 178K

16



RED LWNBRG SLOWBURN 57L

TED 57L • 2315715 • January 15 2023

RED U2 DOMINION
RED LWNBRG SLOWBURN 102H
RED U2 FAVORITE 275F

RED SIX MILE JOHN WICK 882E
RED LWNBRG LADY HARLOW 54H
RED LWNBRG HARVESTOR 43F

RED HOWE HESSTON 212C
RED U2 HIDE HO 459D
RED U-2 RENOWN 193C
RED KBJ FAVORITE 931B

RED U-2 RECKONING 149A
RED SIX MILE & CO GLORIA 29A
RED LWNBRG HARVESTOR 103C
RED LWNBRG FUSION 128D

PERF DATA	
BW	80
WW	840
205D	790
365D	1226

EPDS	BW: +1.8	WW: +65	YW: +110	M: +22	MARB:	REA	CWT:
%	60	2	2	76	-	-	-

- Hard to ignore in the bull pen, this stud blends natural muscle, bold rib shape and length into an athletic package
- Moderate birth combined with top 1% of the breed growth at weaning and yearling
- 5 generations of consistent, heavy milking, big barreled cows that worked extremely hard

17



RED LWNBRG SLOWBURN 87L

TED 87L • 2315731 • JANUARY 17 2023



RED U2 DOMINION AMF NHF
RED LWNBRG SLOWBURN 102H
RED U2 FAVORITE 275F

RED BRYLOR AUTOMATIC 95B
RED LWNBRG AUTOMATIC 157G
RED LWNBRG FUSION 5D

RED HOWE HESSTON 212C
RED U2 HIDE HO 459D
RED U-2 RENOWN 193C
RED KBJ FAVORITE 931B

RED WHEEL DODGE CITY 61Y
BLACK BRYLOR LAKME 155Y
RED ANDRAS FUSION R236
RED TED CATALYST 20W

PERF DATA

BW	90
WW	800
205D	739
365D	1307

- High calibre performance bull that is balanced in all traits
- Massive volume and dimension, superior structure and a really cool herd bull look
- Length of spine to go along with loads of rib shape, he should sire the easy keeping kind
- Dam is the front pasture type, dense, sound and stout with great instincts
- Maternal brother last year sold to Ken Gruninge



MATERNAL BROTHER
RIDGELINE 182K

EPDS	BW: +3.0	WW: +61	YW: +113	M: +21	MARB:	REA	CWT:
%	81	4	2	84			

18



RED LWNBRG SLOWBURN 157L

TED 157L • 2315774 • January 27 2023

RED U2 DOMINION
RED LWNBRG SLOWBURN 102H
RED U2 FAVORITE 275F

RED LWNBRG REVOLVE 166E
RED LWNBRG MAY DESIGN 170H
RED LWNBRG HARVESTOR 56E

RED HOWE HESSTON 212C
RED U2 HIDE HO 459D
RED U-2 RENOWN 193C
RED KBJ FAVORITE 931B

MRLA RELOAD 56C
RED LWNBRG ROLLIN DEEP 36B
RED LWNBRG HARVESTOR 103C
RED TED SHOCO DATA 116Z

PERF DATA

BW	83
WW	738
205D	731
365D	1164

EPDS	BW: +1.7	WW: +49	YW: +87	M: +23	MARB: +0.29	REA +0.46	CWT: +32
%	58	25	21	66	35	29	29

- Maternally charged Slowburn son
- Outcross cow family featuring SAV 1441 and SAV 0338
- Dam's sire has 3 CAA Elite cows stacked in the maternal side of his pedigree, 36B, 155P who had 13 natural calves with a ratio of 105 and then 26L who had 10 natural calves with a 106 ratio, all excellent footed cows
- Full brother sold in last year sale to Rohrich's at Cutting Edge Ranch



FULL BROTHER UNDIVIDED 63K



RED ANGUS

19



RED LWNBRG SLOWBURN 167L

TED 167L · 2315780 · JANUARY 29 2023



RED U2 DOMINION AMF NHF
RED LWNBRG SLOWBURN 102H
RED U2 FAVORITE 275F

RED TOPHAM MCLOVIN 757E
RED LWNBRG MS MADONA 60H
RED LWNBRG FUSION 117E

RED HOWE HESSTON 212C
RED U2 HIDEH HO 459D
RED U-2 RENOWN 193C
RED KBJ FAVORITE 931B

RED DWJO SUNDANCE 114A
RED TOPHAM MS MADONA 977W
RED ANDRAS FUSION R236
RED LWNBRG KODIAK 121C

PERF DATA	
BW	70
WW	732
205D	731
365D	1065

EPDS	BW: +1.6	WW: +50	YW: +80	M: +25	MARB:	REA	CWT:
%	56	22	34	42	-	-	-

- Twin bull
- Moderate made with a ton of thickness and awesome hair
- High libido, athletic and he's easy to find in the pen
- Dam has had twins two years in a row
- Cow family is moderate made but has excellent foot quality going back 4 generations
- Keep every female, they will be the money making kind



20



RED LWNBRG SLOWBURN 176L

TED 176L · 2315788 · January 31 2023

RED U2 DOMINION AMF NHF
RED LWNBRG SLOWBURN 102H
RED U2 FAVORITE 275F

RED LWNBRG OUTLOOK 14F
RED LWNBRG BELLE 72H
RED TED COWBOY CUT 96A

RED HOWE HESSTON 212C
RED U2 HIDEH HO 459D
RED U-2 RENOWN 193C
RED KBJ FAVORITE 931B

RED 5L DEFENDER 560-30Z
RED LWNBRG FUSION 7D
RED LAZY MC COWBOY CUT 26U
RED TED MAKE MY DAY 57L

PERF DATA	
BW	83
WW	770
205D	773
365D	1183

EPDS	BW: +1.4	WW: +58	YW: +95	M: +23
%	52	6	10	66
	MARB: -		REA -	CWT: -
%	-	-	-	-



OUTLOOK 14F

TWIN BROTHERS LOT 21 & 22



TED 13L



MS MADONA 30H
DAM OF TED 12L & 13L



FULL BROTHER
SLOWBURN 151K

RED U2 DOMINION AMF NHF
RED LWNBRG SLOWBURN 102H
RED U2 FAVORITE 275F

RED TOPHAM MCLOVIN 757E
RED LWNBRG MS MADONA 30H
RED LWNBRG CHATEAU 17B

RED HOWE HESSTON 212C
RED U2 HIDE HO 459D
RED U-2 RENOWN 193C
RED KBJ FAVORITE 931B

RED DWAJO SUNDANCE 114A
RED TOPHAM MS MADONA 977W
RED TED CHATEAU 142Y
RED TED FRONTLINE 45W

21

RED LWNBRG SLOWBURN 13L

TED 13L · 2315688 · January 07 2023



EPDS	BW: +3.9	WW: +55	YW: +92	M: +27
%	91	10	13	21

PERF DATA

BW	80
WW	755
205D	695
365D	1111

22

RED LWNBRG SLOWBURN 12L

TED 12L · 2315687 · January 07 2023



EPDS	BW: +3.9	WW: +55	YW: +92	M: +27
%	91	10	13	21

PERF DATA

BW	70
WW	590
205D	552
365D	1302

- Twin Slowburn sons that are thick, hairy and would be excellent at filling the replacement pen
- Excellent structure and balance
- Dam is a beautiful Mclovin daughter that has a potent maternal lineage
- Same cow family as herd bull candidate Instinct 36L
- Full brother sold in last years sale to Spring Creek

23 RED LWNBRG SLOWBURN 213L

TED 213L · 2335701 · February 14 2023



RED U2 DOMINION
RED LWNBRG SLOWBURN 102H
RED U2 FAVORITE 275F

RED HOWE HESSTON 212C
RED U2 HIDE HO 459D
RED U-2 RENOWN 193C
RED KBJ FAVORITE 931B

RED LWNBRG HARVESTOR 103C
RED LWNBRG CADENCE 17J
RED LWNBRG ROLLIN DEEP 85B

TED HARVESTOR 154A
RED LWNBRG CADENCE 141Y
RED BIEBER ROLLIN DEEP Y118
RED TED OLES OSCAR 74Z

PERF DATA

BW	80
WW	720
205D	804
365D	1207

EPDS	BW: +2.4	WW: +62	YW: +103	M: +23	MARB:	REA	CWT:
%	71	3	4	66	-	-	-

- Long spined and correct
- Moderate at birth with plenty of gas at weaning
- Cow maker
- Dam is an ET daughter of the CAA Elite donor cow 85B, she has six maternal sisters working in the herd
- She also has maternal brothers working at Ben Cooksley's, Schuld's, Lipa's and Ben Ashley's

24 RED LWNBRG SLOWBURN 209L

TED 209L · 2320827 · February 13 2023



RED U2 DOMINION
RED LWNBRG SLOWBURN 102H
RED U2 FAVORITE 275F

RED HOWE HESSTON 212C O
RED U2 HIDE HO 459D
RED U-2 RENOWN 193C
RED KBJ FAVORITE 931B

RED U2 BLUE COLLAR 295E
RED LWNBRG ANEXA 73J
RED LWNBRG GUNNER 121D

RED U-2 RECKONING 149A
RED U-2 ANEXA 439A
RED LAZY MC GUNNER 144B
RED TED MULBERRY 95U

PERF DATA

BW	70
WW	650
205D	730
365D	1140

EPDS	BW: +1.1	WW: +48	YW: +80	M: +24	MARB:	REA	CWT:
%	46	28	34	54	-	-	-



25 LAX **RED LWNBRG SLOWBURN 127L**

TED 127L · 2315753 · January 22 2023

RED U2 DOMINION AMF NHF
RED LWNBRG SLOWBURN 102H
RED U2 FAVORITE 275F

RED HOWE HESSTON 212C
RED U2 HIDEE HO 459D
RED U-2 RENOWN 193C
RED KBJ FAVORITE 931B

RED MINBURN COPENHAGEN 3Y
RED LWNBRG MINI MAY 117H
RED U-2 LEAH 382C

RED RMJ REDMAN 1T
MINBURN MAY 112M
RED U-2 RECKONING 149A
RED U-2 LEAH 179X

PERF DATA	
BW	84
WW	800
205D	774
365D	1303

EPDS	BW: +3.4	WW: +63	YW: +111	M: +25	MARB: -	REA: -	CWT: -
%	86	3	2	42	-	-	-

- Designed to add pounds at weaning and add accelerated appetite on feed
- Larger framed, with ample muscle, bone and length of spine
- Shag haired, thick topped this powerhouse was the 3rd ranked bull at a year or a 122 YI



26 LAX **RED LWNBRG SLOWBURN 108L**

TED 108L · 2315743 · January 19 2023

RED U2 DOMINION AMF NHF
RED LWNBRG SLOWBURN 102H
RED U2 FAVORITE 275F

RED HOWE HESSTON 212C O
RED U2 HIDEE HO 459D
RED U-2 RENOWN 193C
RED KBJ FAVORITE 931B

RED TOPHAM MCLOVIN 757E
RED LWNBRG MS MADAONA 28H
RED LWNBRG FLEX 51D

RED DWJO SUNDANCE 114A
RED TOPHAM MS MADONA 977W
RED LWNBRG FLEX 79B
RED TED BARNEY 28X

PERF DATA	
BW	84
WW	904
205D	859
365D	1165

EPDS	BW: +2.3	WW: +65	YW: +95	M: +24	MARB: -	REA: -	CWT: -
%	69	2	10	54	-	-	-

- A bigger framed cow bull with stretch
- 4th ranked bull in the pen at weaning with a 115 wean index
- Pedigree that will add size and performance



DUA 284F

RED U2 DOMINION SIRE OF LOT 27



27 LAX **RED LWNBRG DOMINION 168L**

TED 168L · 2315781 · January 29 2023

RED HOWE HESSTON 212C
RED U2 DOMINION
RED U2 HIDEE HO 459D

RED U6 HESSTON 14Z
RED HOWE MS ARAB 170X
RED HOWE MAGNUM 169W
RED U-2 HIDEE HO 281Y

BJ'S FIRE CRACKER 801
LWNBRG MERIT JILT 52J
RED LWNBRG HARVESTOR 54G

S A V SENSATION 5615
MERIT JILT 7091
RED LWNBRG HARVESTOR 41E
RED LWNBRG FUSION 114C

PERF DATA	
BW	100
WW	800
205D	832
365D	1341

EPDS	BW: +5.5	WW: +64	YW: +119	M: +27	MARB: -	REA: -	CWT: -
%	98	2	1	21	-	-	-

- Standout performance bull with as much shape and substance as any in the sale
- WI 109 and YI 117
- Outcross genetics
- High end cow making abilities built in from the maternal side, featuring SAV Sensation and the high end donor cow Merit Jilt 7091 that did an
- incredible job at BJ Cattle Company leaving a long trail of potent functional females
- Profit driving cow family



HARVESTOR 41E



MATERNAL GRANDAM
MERIT JILT 7091



SAV SENSATION 5615

REF
SIRE

C

RED TOPHAM MCLOVIN 757E

SIRE OF LOTS 28 TO 38



RED ANGUS



RED TOPHAM MCLOVIN 757E

TOP 757E • 1961020 • MARCH 16 2017

RED T-K RECOIL 72Y
RED DWAJO SUNDANCE 114A
RED DWAJO LUCY 21TRED FLYING K PATRICK 85S
RED TOPHAM MS MADONA 977W
RED TOPHAM MS MADONARED BAR-E-L WARDEN 144W
RED T-K ANNA 54T
RED U-2 ALL STAR 1513R
RED DWAJO LUCY 73N
RED PATRIOT 629 OSF
RED FLYING K BERRY 141K
RED BRYLOR SDL RICHTER 212R
RED TOPHAM MS MADONNA 438P

PERF DATA

BW	91
WW	710
205D	770
365D	1218

EPDS	BW: +2.3	WW: +51	YW: +81	M: +32
	% 69	19	32	2
	REA +0.39	CWT: +34	CWT: +37	
	% 51	47	22	



DAUGHTER MS MADONA 30H

28



RED LWNBRG MCLOVIN 22L

TED 22L • 2315696 • JANUARY 10 2023

RED DWAJO SUNDANCE 114A
RED TOPHAM MCLOVIN 757E
RED TOPHAM MS MADONA 977WRED U2 BLUE COLLAR 295E
RED LWNBRG ANEXA 69J
RED LWNBRG ROLLIN DEEP 85BRED T-K RECOIL 72Y
RED DWAJO LUCY 21T
RED FLYING K PATRICK 85S
RED TOPHAM MS MADONA 754T
RED U-2 RECKONING 149A
RED U-2 ANEXA 439A
RED BIEBER ROLLIN DEEP Y118
RED TED OLES OSCAR 74Z

PERF DATA

BW	74
WW	770
205D	750
365D	1259

- A proud herdsire prospect with length, muscle, smooth front end and stylish design
- Calving ease design and numbers
- Dam is a natural daughter of top donor cow 85B
- The Mclovin/ 85B/Blue Collar combo will add milk and improve udder quality

EPDS	BW: +0.4	WW: +51	YW: +90	M: +31	MARB: -	REA: -	CWT: -
	% 33	19	16	3	-	-	-

29



RED LWNBRG MCLOVIN 30L

TED 30L · 2315703 · JANUARY 11 2023



RED DWAJO SUNDANCE 114A
RED TOPHAM MCLOVIN 757E
RED TOPHAM MS MADONA 977W

RED WHEEL MONOPOLY 85C
RED LWNBRG BARBIE 72J
RED LWNBRG FIRST DOWN 21F

RED T-K RECOIL 72Y
RED DWAJO LUCY 21T
RED FLYING K PATRICK 85S
RED TOPHAM MS MADONA 754T

RED TER-RON MONOPOLY 84A
BLACK WHEEL BARBIE 66A
RED BAR-E-L FIRST DOWN 161D
RED LWNBRG KODIAK 51C

PERF DATA

BW	70
WW	747
205D	732
365D	1113

EPDS	BW: -0.6	WW: +44	YW: +74	M: +26	MARB:	REA	CWT:
%	19	43	48	30			

- Stout made heifer bull packed full of red meat
- Sound from the ground up, athletic with high libido
- The Monopoly daughters are the most moderate cows we have, very tidy udders and all caught to AI as heifer



30 LX

RED LWNBRG MCLOVIN 74L

TED 74L · 2315722 · January 16 2023

RED DWAJO SUNDANCE 114A
RED TOPHAM MCLOVIN 757E
RED TOPHAM MS MADONA 977W

RED BRYLOR RED KODIAK 3A
RED LWNBRG KODIAK 121C
RED TED WANDER 119A

RED T-K RECOIL 72Y
RED DWAJO LUCY 21T
RED FLYING K PATRICK 85S
RED TOPHAM MS MADONA 754T

BLACK BRYLOR KODIAK 204Y
RED BRYLOR FAYETTE 40Y
RED GET-A-LONG WANDER 90S
RED TED SPITFIRE 96Y

PERF DATA

BW	81
WW	770
205D	692
365D	977

EPDS	BW: +0.3	WW: +43	YW: +60	M: +27	MARB: +0.11	REA +0.49	CWT: +33
%	32	48	80	21	76	22	25

- Straight Canadian pedigree
- Two sisters working in the herd
- Dam is excellent footed to go along with an impressive production record
- Maternal brothers working at Tempest Red Angus, Cavan Ranch, White Ranch, and Hicken Ranch



MATERNAL BROTHER
BLUE COLLAR 41J



MATERNAL BROTHER
ENDZONE 37F



FULL BROTHER
FIRST DOWN 91G

31



RED LWNBRG MCLOVIN 175L

TED 175L · 2315787 · JANUARY 31 2023



RED ANGUS



RED DWAJO SUNDANCE 114A O
RED TOPHAM MCLOVIN 757E
RED TOPHAM MS MADONA 977W

RED LWNBRG REVOLVE 166E
RED LWNBRG REVOLVE 16G
RED LWNBRG CONTENDER 32E

RED T-K RECOIL 72Y
RED DWAJO LUCY 21T
RED FLYING K PATRICK 85S
RED TOPHAM MS MADONA 754T

MRLA RELOAD 56C
RED LWNBRG ROLLIN DEEP 36B
RED SSS CONTENDER 121B
RED TED PATRIOT 41Z

PERF DATA

BW	89
WW	805
205D	785
365D	-

- Classy bull that is easy to find in the pen
- Herd bull presence, sound structured and athletic
- Outcross cow family

EPDS	BW: +1.7	WW: +46	YW: +77	M: +27	MARB: +0.31	REA +0.43	CWT: +30
%	55	35	40	25	30	35	35

32



RED LWNBRG MCLOVIN 93L

TED 93L · 2315735 · January 18 2023



RED DWAJO SUNDANCE 114A
RED TOPHAM MCLOVIN 757E
RED TOPHAM MS MADONA 977W

RED SIX MILE JOHN WICK 882E
RED LWNBRG LADY HARLOW 118H
RED LWNBRG ICON 124F

RED T-K RECOIL 72Y
RED DWAJO LUCY 21T
RED FLYING K PATRICK 85S
RED TOPHAM MS MADONA 754T

RED U-2 RECKONING 149A
RED SIX MILE & CO GLORIA 29A
RED COUNT RIDGE ICON 1D
RED LWNBRG AUTOMATIC 77D

PERF DATA

BW	94
WW	900
205D	854
365D	1323

EPDS	BW: +3.8	WW: +64	YW: +109	M: +32	MARB: -	REA: -	CWT: -
%	90	2	2	2	-	-	-

- An absolute train of a beef bull
- Hair, length of spine, bone and a ton of mass
- Wean index of 113 ranking him 6th of 87 red bulls and YI 108
- Top of the breed growth
- Straight Canadian pedigree



33



RED LWNBRG MCLOVIN 181L

TED 181L · 2315793 · February 02 2023

RED DWAJO SUNDANCE 114A 0
RED TOPHAM MCLOVIN 757E
RED TOPHAM MS MADONA 977W

RED T-K RECOIL 72Y
RED DWAJO LUCY 21T
RED FLYING K PATRICK 85S
RED TOPHAM MS MADONA 754T

PERF DATA	
BW	84
WW	740
205D	712
365D	1096

RED ANDRAS FUSION R236
RED LWNBRG FUSION 7D
RED LWNBRG ROLLIN DEEP 36B

ANDRAS IN FOCUS B175
RED ANDRAS BELLE B167
RED BIEBER ROLLIN DEEP Y118
RED TED LODI PRINCE 155P

EPDS	BW: +1.1	WW: +44	YW: +72	M: +31	MARB: +0.44	REA +0.35	CWT: +36
%	46	43	53	3	11	58	19

34



RED LWNBRG MCLOVIN 88L

TED 88L · 2315732 · January 18 2023

RED DWAJO SUNDANCE 114A
RED TOPHAM MCLOVIN 757E
RED TOPHAM MS MADONA 977W

RED T-K RECOIL 72Y
RED DWAJO LUCY 21T
RED FLYING K PATRICK 85S
RED TOPHAM MS MADONA 754T

PERF DATA	
BW	85
WW	809
205D	733
365D	1197

RED TED CHATEAU 142Y
RED LWNBRG CHATEAU 17B
RED TED FRONTLINE 45W

RED GLACIER CHATEAU 744
RED TED RAMBLER 52L
RED FABULOUS FRONT LINE 315N
RED TED ROMEO 46P

EPDS	BW: +1.1	WW: +43	YW: +72	M: +31	MARB: +0.27	REA +0.32	CWT: +19
%	46	48	53	3	38	68	74



FULL SISTER 30H

FULL BROTHER MCLOVIN 20K

35



RED LWNBRG MCLOVIN 71L

TED 71L · 2335677 · January 17 2023

RED DWAJO SUNDANCE 114A
RED TOPHAM MCLOVIN 757E
RED TOPHAM MS MADONA 977W

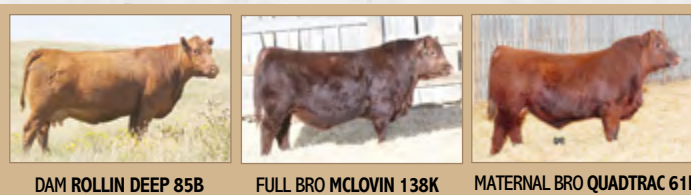
RED T-K RECOIL 72Y
RED DWAJO LUCY 21T
RED FLYING K PATRICK 85S
RED TOPHAM MS MADONA 754T

PERF DATA	
BW	78
WW	752
205D	679
365D	1165

RED BIEBER ROLLIN DEEP Y118
RED LWNBRG ROLLIN DEEP 85B
RED TED OLES OSCAR 74Z

RED BIEBER ROOSEVELT W384
RED BIEBER TILLY 399W
RED CROWFOOT OLE'S OSCAR 2042M
RED TED SHOCO DATA 18W

EPDS	BW: +1.5	WW: +51	YW: +88	M: +31	MARB: +0.40	REA +0.42	CWT: +37
%	54	19	19	3	16	38	16



DAM ROLLIN DEEP 85B

FULL BRO MCLOVIN 138K

MATERNAL BRO QUADTRAC 61F

36



RED LWNBRG MCLOVIN 177L

TED 177L · 2315789 · January 31 2023

RED DWAJO SUNDANCE 114A
RED TOPHAM MCLOVIN 757E
RED TOPHAM MS MADONA 977W

RED T-K RECOIL 72Y
RED DWAJO LUCY 21T
RED FLYING K PATRICK 85S
RED TOPHAM MS MADONA 754T

PERF DATA	
BW	88
WW	770
205D	735
365D	1132

RED 5L DEFENDER 560-30Z
RED LWNBRG DEFENDER 36F
RED LWNBRG AUTOMATIC 23D

RED 5L ADVOCATE 817-14W
5L BLACK ADINA 525-560
RED BRYLOR AUTOMATIC 95B
RED LWNBRG PEACEMAKER 30B

EPDS	BW: +1.0	WW: +47	YW: +81	M: +28	MARB:	REA	CWT:
%	44	32	32	14	-	-	-

37



RED LWNBRG MCLOVIN 37L

TED 37L · 2320794 · January 12 2023

RED DWAJO SUNDANCE 114A
RED TOPHAM MCLOVIN 757E
RED TOPHAM MS MADONA 977W

RED T-K RECOIL 72Y
RED DWAJO LUCY 21T
RED FLYING K PATRICK 85S
RED TOPHAM MS MADONA 754T

PERF DATA	
BW	81
WW	828
205D	733
365D	1277

RED LWNBRG HARVESTOR 103C
RED LWNBRG HARVESTOR 43F
RED LWNBRG FUSION 128D

TED HARVESTOR 154A
RED LWNBRG CADENCE 141Y
RED ANDRAS FUSION R236
RED TED OLES OSCAR 121X

EPDS	BW: +3.2	WW: +57	YW: +97	M: +28
%	83	9	0	14
	MARB: -	REA -	CWT: -	
%	-	-	-	-



MATERNAL BRO. FUGITIVE 178K

38

RED LWNBRG MCLOVIN 236L

TED 236L · 2315793 · February 02 2023

RED DWAJO SUNDANCE 114A
RED TOPHAM MCLOVIN 757E
RED TOPHAM MS MADONA 977W

RED T-K RECOIL 72Y
RED DWAJO LUCY 21T
RED FLYING K PATRICK 85S
RED TOPHAM MS MADONA 754T

RED ANDRAS FUSION R236
RED LWNBRG FUSION 7D
RED LWNBRG ROLLIN DEEP 36B

ANDRAS IN FOCUS B175
RED ANDRAS BELLE B167
RED BIEBER ROLLIN DEEP Y118
RED TED LODI PRINCE 155P

PERF DATA

BW	84
WW	740
205D	712
365D	1096

EPDS	BW: +1.1	WW: +44	YW: +72	M: +31	MARB: +0.44	REA +0.35	CWT: +36
%	46	43	53	3	11	58	19



SIXM 234G



DAM OF SIXM 234G

SIX MILE P.O.E. 234G SIRE OF LOT 41

39

LWNBRG P.O.E. 17L

TED 17L · 2315692 · JANUARY 09



MATERNAL BROTHER- ICON 58F



RED SIX MILE JOHN WICK 882E
SIX MILE P.O.E. 234G
SIX MILE MS DARK STAR 161E

RED U-2 RECKONING 149A
RED SIX MILE & CO GLORIA 29A
PEAK DOT ELIMINATOR 100Z
SIX MILE MS DARK STAR 583A

RED SIX MILE SAKIC 832S
RED TED SAKIC 27Z
RED TED DAKOTA COPPER 66T

RED SIX MILE AVIATOR 217P
RED SIX MILE SIERA 257P
RED OHRR DAKOTA COPPER 29K
RED TED GRAND CANYON 73M OSC

PERF DATA

BW	78
WW	950
205D	856
365D	1279

EPDS	BW: -0.4	WW: +57	YW: +95	M: +28	MARB:	REA	CWT:
%	21	7	10	14	-	-	-

- A standout from a very early age and a favourite of most that have seen him
- Powerfully built stud is loaded with thickness and shape from front to back
- Herd bull presence to go along with real world performance and maternal excellence
- Old school maternal blood blended with cutting edge outcross genetics on the top side
- 13 year old dam that is a ranchers dream, low maintenance, functional, self-appointed boss lady of the entire herd and has a 106 wean ratio on 6 natural sons
- 3 natural daughters working in the herd, CAA Elite daughter 30B is the grandam of LWNBRG Instinct 100L
- Dam of POE 234G, Darkstar 161E, was designated CAA Elite this year with a ratio of 107 on 5 calves
- RETAINING IN HERD SEMEN INTEREST



REF
SIRE **D**

RED LWNBRG CRAFTSMAN 18H

SIRE OF LOTS 40 AND 41



TED 18H

TED 18H • 2182680 • JANUARY 13 2020

RED DWAJO SUNDANCE 114A
RED TOPHAM MCLOVIN 757E
RED TOPHAM MS MADONA 977W

RED T-K RECOIL 72Y
RED DWAJO LUCY 21T
RED FLYING K PATRICK 85S
RED TOPHAM MS MADONA 754T

RED ANDRAS FUSION R236 RED
LWNBRG FUSION 5D
RED TED CATALYST 20W

ANDRAS IN FOCUS B175
RED ANDRAS BELLE B167
RED TED CATALYST 107T
RED TED HOBO 76H

PERF DATA	
BW	83
WW	820
205D	750
365D	1207

BW: +1.3	WW: +52	YW: +91	M: +25	MARB: +0.34	REA +0.41	CWT: +31
% 50	17	14	42	23	40	30



40 RED LWNBRG CRAFTSMAN 20L

TED 20L • 2315695 • January 10 2023

RED TOPHAM MCLOVIN 757E
RED LWNBRG CRAFTSMAN 18H
RED LWNBRG FUSION 5D

RED DWAJO SUNDANCE 114A
RED TOPHAM MS MADONA 977W
RED ANDRAS FUSION R236
RED TED CATALYST 20W

RED BIEBER ROLLIN DEEP Y118
RED LWNBRG ROLLIN DEEP 25C
RED TED SAKIC 3W

RED BIEBER ROOSEVELT W384
RED BIEBER TILLY 399W
RED SIX MILE SAKIC 832S
RED TED CHATEAU 15T

PERF DATA	
BW	86
WW	780
205D	686
365D	1149

EPDS	BW: +1.1	WW: +44	YW: +78	M: +26	MARB: +0.30	REA +0.37	CWT: +32
%	46	43	39	30	33	52	29

- Soft made, deep bodied with a beautiful dark red hair coat
- Donor dam is built low to the ground with a massive hip, very good feet and has as good a fleshing ability as any in our herd
- She is a CAA premier cow and has sons at McGowans, M Bar, Wolfcreek and Gouw's along with two natural daughters in our herd
- Heavy milk in the pedigree to go along with exceptional fertility



DAM ROLLIN DEEP 25C



FULL BROTHERS HARVESTER 46E



FULL BROTHER 30G



FULL BROTHER 161H



MATERNAL BROTHER RANSOM 49J

CAN'T MAKE THE SALE?

Watch, Bid & Buy Online

Instructions for Viewing And Bidding At the Sale

Visit www.dlms.ca. Fill out the registration form located under registration and sign-up for your free user account to select a username and password. BIDDERS - To be approved as a bidder, Log in and click BUYER APPROVAL tab, select the sale you are interested in bidding at and click sign up.

For more information or help with buyer approved call:
Mark Shologan 780-699-5082 or Purebred Team 780-991-3025

DLMS
www.dlms.ca
Direct Livestock Marketing Systems



41 RED LWNBRG CRAFTSMAN 69L

TED 69L • 2320798 • January 17 2023

RED TOPHAM MCLOVIN 757E
RED LWNBRG CRAFTSMAN 18H
RED LWNBRG FUSION 5D

RED DWAJO SUNDANCE 114A
RED TOPHAM MS MADONA 977W
RED ANDRAS FUSION R236
RED TED CATALYST 20W

RED LAZY MC GUNNER 144B
RED LWNBRG GUNNER 121D
RED TED MULBERRY 95U

RED LAZY MC TROOPER 21Y
RED LAZY MC STAR 185M
RED FINE LINE MULBERRY 26P
RED TED KICHEN SAGEBRUSH 109P

PERF DATA	
BW	86
WW	909
205D	820
365D	1323

EPDS	BW: +1.8	WW: +60	YW: +105	M: +24	MARB: +0.22	REA +0.43	CWT: +27
%	60	5	3	54	51	35	49


TED 140J
TED 140J • 2235889 • FEBRUARY 01 2021
RED TER-RON MONOPOLY 84A D
RED WHEEL MONOPOLY 85C
BLACK WHEEL BARBIE 66A
TER-RON PARK PLACE 18Y
RED TER-RON ALYSA 33R
DMM CREED 75W
BARBARA OF PEAK DOT 541R
RED ANDRAS FUSION R236
RED LWNBRG FUSION 73C
RED TED CATALYST 27Y
ANDRAS IN FOCUS B175
RED ANDRAS BELLE B167
RED TED CATALYST 107T
RED TED FRONTLINE 45W

PERF DATA	
BW	95
WW	736
205D	787
365D	1164

EPDS	BW: +1.7	WW: +55	YW: +99	M: +19	MARB:	REA	CWT:
%	58	10	6	95	-	-	-

OWNED WITH BRIDGEWAY LIVESTOCK
42

RED LWNBRG CARTEL 102L
TED 102L • 2315740 • JANUARY 19 2023

MATERNAL BROTHERS

SLOWBURN 102H

SINGE 44K
RED WHEEL MONOPOLY 85C
RED LWNBRG CARTEL 140J
RED LWNBRG FUSION 73C
RED U-2 RENOWN 193C
RED U2 FAVORITE 275F
RED KBJ FAVORITE 931B
RED TER-RON MONOPOLY 84A
BLACK WHEEL BARBIE 66A
RED ANDRAS FUSION R236
RED TED CATALYST 27Y
RED U-2 RECKONING 149A
RED U-2 ENVIOUS 147X
RED U-2 MAUI BUILT 38Y
RED KBJ FAVORITE 888W

PERF DATA	
BW	97
WW	911
205D	829
365D	1330

EPDS	BW: +4.6	WW: +67	YW: +113	M: +19	MARB:	REA	CWT:
%	95	1	2	95	-	-	-

- Big time growth bull with added frame and loaded with muscle front to back
- Big boned and athletic
- Super sound from the ground up
- Wean index of 109 and yearling of 116
- Maternal brother to herdsire Slowburn 102H
- Maternal brother sold in last years sale to Wolfcreek
- Straight Canadian pedigree

43



RED LWNBRG CARTEL 112L

TED 112L • 2315745 • JANUARY 20 2023



RED DWAJO SUNDANCE 114A
RED TOPHAM MCLOVIN 757E
RED TOPHAM MS MADONA 977W

RED WHEEL MONOPOLY 85C
RED LWNBRG BARBIE 72J
RED LWNBRG FIRST DOWN 21F

RED T-K RECOIL 72Y
RED DWAJO LUCY 21T
RED FLYING K PATRICK 85S
RED TOPHAM MS MADONA 754T

RED TER-RON MONOPOLY 84A
BLACK WHEEL BARBIE 66A
RED BAR-E-L FIRST DOWN 161D
RED LWNBRG KODIAK 51C

PERF DATA	
BW	98
WW	836
205D	764
365D	-

- Big time power bull that stands square on the ground
- Ripped with muscle, huge barrel and an extra rib
- These stout, big boned bulls are exactly what's needed to make easy doing cows and sire calves that stomp the scale down

EPDS	BW: +4.5	WW: +51	YW: +86	M: +19	MARB:	REA	CWT:
%	94	20	20	96	-	-	-

44



RED LWNBRG CARTEL 156L

TED 156L • 2315773 • January 26 2023

RED WHEEL MONOPOLY 85C
RED LWNBRG CARTEL 140J
RED LWNBRG FUSION 73C

RED BAR-E-L FIRST DOWN 161D
RED LWNBRG FIRST DOWN 21F
RED LWNBRG KODIAK 51C

RED TER-RON MONOPOLY 84A
BLACK WHEEL BARBIE 66A
RED ANDRAS FUSION R236
RED TED CATALYST 27Y

RED CROWFOOT 4ACES 2193Z
RED BAR-E-L GLORIA 87R
RED BRYLOR RED KODIAK 3A
RED TED PATRIOT 113Y

PERF DATA	
BW	86
WW	740
205D	693
365D	1122

EPDS	BW: +0.4	WW: +42	YW: +80	M: +19	MARB:	REA	CWT:
%	33	52	34	95	-	-	-

45



RED LWNBRG CARTEL 233L

TED 233L • 2315817 • February 22 2023

RED WHEEL MONOPOLY 85C
RED LWNBRG CARTEL 140J
RED LWNBRG FUSION 73C

RED BAR-E-L FIRST DOWN 161D
RED LWNBRG FIRST DOWN 53F
RED LWNBRG HARVESTOR 187C

RED TER-RON MONOPOLY 84A
BLACK WHEEL BARBIE 66A
RED ANDRAS FUSION R236
RED TED CATALYST 27Y

RED CROWFOOT 4ACES 2193Z
RED BAR-E-L GLORIA 87R OSF
TED HARVESTOR 154A
RED TED KARWEIK 74T

PERF DATA	
BW	100
WW	788
205D	827
365D	1213

EPDS	BW: +4.3	WW: +54	YW: +96	M: +22	MARB:	REA	CWT:
%	94	12	9	76	-	-	-

TWIN BROTHERS LOT 46 & 47



TED 18L

RED WHEEL MONOPOLY 85C
RED LWNBRG CARTEL 140J
RED LWNBRG FUSION 73C

RED TER-RON MONOPOLY 84A
BLACK WHEEL BARBIE 66A
RED ANDRAS FUSION R236
RED TED CATALYST 27Y

RED BRYLOR AUTOMATIC 95B
RED LWNBRG AUTOMATIC 143F
RED LWNBRG PEACEMAKER 95B

RED WHEEL DODGE CITY 61Y
BLACK BRYLOR LAKME 155Y
RED GMRA PEACEMAKER 1216
RED TED CATALYST 72Y

46

RED LWNBRG CARTEL 19L

TED 19L • 2315694 • January 10 2023



EPDS	BW: +2.3	WW: +53	YW: +94	M: +26
%	69	14	12	41

PERF DATA

BW	80
WW	740
205D	651
365D	1193

47

RED LWNBRG CARTEL 18L

TED 18L • 2315693 • January 10 2023



EPDS	BW: +2.3	WW: +53	YW: +94	M: +26
%	69	14	12	41

PERF DATA

BW	88
WW	880
205D	773
365D	1157

- Twin bulls calves with rock solid growth numbers and phenotype
- Soft made and thick with plenty of hair
- Grandam 95B is CAA Elite along with twin sister 94B
- Maternal brother at Rock Lake



MATERNAL BROTHER
TO 18L & 19L
WICK 81H

Thank You

BJ SCHEIRLINK & TAURUS PREMIX

for supplying us with
coffee and donuts
on sale day!

TAURUS PREMIX Ltd.

BJ Scheirlink
Business Development
Representative
P: 1403.929.2484
E: bj.scheirlink@tauruspremix.com
Box 2078
Cardston, AB T0K 0N0





RED SRJJ RIDGLINE 00123 SIRE OF LOTS 48 TO 50

48



RED LWNBRG RIDGLINE 83L

TED 83L • 2315730 • JANUARY 17 2023



RED TER-RON PARKER 34A
RED SRJJ RIDGLINE 0012
RED 936 ECHO 2526

RED U-2 AMBUSH 423Y
RED U-2 BEAUTY 226B
RED U2 BEAUTY 192Z

TER-RON PARK PLACE 18Y
RED TER-RON DIAMOND MIST 164Y
RED LARSON THUNDEBIRD 936
RED ECHO 091 2526

RED FLYING K AMBUSH 51T
RED U-2 ANEXA 5F
RED U2 MISSION 61W
RED FLYING K BEAUTY 92U

PERF DATA	
BW	90
WW	909
205D	820
365D	1218

EPDS	BW: +2.1	WW: +62	YW: +97	M: +20	MARB:	REA	CWT:
%	65	3	8	91	-	-	-

- As much centre mass, depth and rib shape as you possibly pack into a bull
- A replica of his sire
- Will add power and pounds
- Three maternal sisters working in the herd and a son working at Granum Colony



DAM BEAUTY 226B



MATERNAL BROTHER ORIGINAL 115H

49



RED LWNBRG RIDGELINE 142L

TED 142L • 2315763 • JANUARY 25 2023



RED TER-RON PARKER 34A
RED SRJJ RIDGELINE 0012
RED 936 ECHO 2526

TER-RON PARK PLACE 18Y
RED TER-RON DIAMOND MIST 164Y
RED LARSON THUNDEBIRD 936
RED ECHO 091 2526

RED 5L DEFENDER 560-30Z
RED LWNBRG DEFENDER 44F
RED TED COWBOY CUT 96A

RED 5L ADVOCATE 817-14W
5L BLACK ADINA 525-560
RED LAZY MC COWBOY CUT 26U
RED TED MAKE MY DAY 57L

PERF DATA

BW	92
WW	830
205D	773
365D	1223

EPDS	BW: +1.4	WW: +57	YW: +97	M: +21	MARB:	REA	CWT:
%	52	7	8	84	-	-	-



MATERNAL BROTHER FIRST CLASS 7K

- A big stretchy cow bull that will sire pounds and fill up the replacement pen
- Excellent footed cows stacked in his pedigree with real world fleshing ability

50



RED LWNBRG RIDGELINE 152L

TED 152L • 2315769 • January 26 2023



RED TER-RON PARKER 34A
RED SRJJ RIDGELINE 0012
RED 936 ECHO 2526

TER-RON PARK PLACE 18Y
RED TER-RON DIAMOND MIST 164Y
RED LARSON THUNDEBIRD 936
RED ECHO 091 2526

RED U-2 STRIKE FORCE 24Y
RED U-2 MISTY 258B
RED U-2 MISTY 421Y

RED U2 MISSION 61W
RED U-2 LASSIE 8012U
RED HOWE MAGNUM 169W
RED U2 MISTY 110W

PERF DATA

BW	85
WW	785
205D	734
365D	1204

EPDS	BW: +1.6	WW: +53	YW: +89	M: +17	MARB:	REA	CWT:
%	56	14	17	98			



DAM - MISTY 258B



MATERNAL BROTHER
BLUE COLLAR 67H



RED ANGUS



REF
SIRE **F**

RED LWNBRG BRXTN 68H

SIRE OF LOTS 51 TO 57

TED 68H • 2150026 • JANUARY 25 2020



BRXTN 68H#1

LWNBRG CROSS OVER 66B
RED LWNBRG BROXBURN 68D
RED TED SHOCO DATA 18W

RED SSS CONTENDER 121B
RED LWNBRG CONTENDER 4E
RED LWNBRG ROLLIN DEEP

RED BIEBER ROLLIN DEEP Y118
TED BISMARCK 50Y
RED SHOCO DATA
RED TED COMBINATION 40R

RED SSS SOLUTION 329Z
RED SSS DYNA 688X
RED BIEBER ROLLIN DEEP Y118
RED LWNBRG BOXCAR 139X

PERF DATA

BW	93
WW	890
205D	874
365D	1399

EPDS	BW: -0.2	WW: +55	YW: +88	M: +26
	% 24	10	19	30
	MARB: +0.32	REA +0.17	CWT: +30	
	% 28	94	36	



BRXTN 68H YEARLING

51



RED LWNBRG BRXTN 1L

TED 1L • 2315679 • JANUARY 01 2023



RED LWNBRG BROXBURN 68D
RED LWNBRG BRXTN 68H
RED LWNBRG CONTENDER 4E

RED MRLA FLEX 49Z
RED LWNBRG FLEX 163B
RED TED HOLLIDAY 55Y

LWNBRG CROSS OVER 66B
RED TED SHOCO DATA 18W
RED SSS CONTENDER 121B
RED LWNBRG ROLLIN DEEP 104B

MRLA 53W
RED GET-A-LONG FIREFLY 363
RED WEBR DOC HOLLIDAY 2N OSF
RED TED FRONTLINE 151W

PERF DATA

BW	84
WW	874
205D	742
365D	1193

EPDS	BW: +0.5	WW: +53	YW: +84	M: +25	MARB:	REA	CWT:
	% 35	14	26	42	-	-	-

- Attractive, deep sided with the same length as his sire, a standout from birth
- His calves will stomp down the scale in the fall
- Heavy milking dam with high end fertility, she's the easy doing kind



MATERNAL BROTHER 77K

52 LX

RED LWNBRG BROXBURN 29L

TED 29L · 2315702 · January 11 2023

RED LWNBRG BROXBURN 68D
RED LWNBRG BRXTN 68H
 RED LWNBRG CONTENDER 4E

LWNBRG CROSS OVER 66B
 RED TED SHOCO DATA 18W
 RED SSS CONTENDER 121B
 RED LWNBRG ROLLIN DEEP 104B

RED SSS CONTENDER 121B
RED LWNBRG CONTENDER 4E
 RED LWNBRG ROLLIN DEEP

RED SSS SOLUTION 329Z OSF
 RED SSS DYNA 688X
 RED BIEBER ROLLIN DEEP Y118
 RED LWNBRG BOXCAR 139X

PERF DATA	
BW	84
WW	809
205D	714
365D	1165

EPDS	BW: -0.2	WW: +52	YW: +84	M: +25	MARB:	REA	CWT:
%	24	17	26	42	-	-	-

- I do appreciate a good linebred animal, but this might be a bit too intense for some
- Screwed up semen straws at AI time and didn't realize till it was too late
- The bull himself is a really good power bull with extra length and added frame

53 LX

RED LWNBRG BRXTN 135L

TED 135L · 2315758 · January 24 2023

RED LWNBRG BROXBURN 68D
RED LWNBRG BRXTN 68H
 RED LWNBRG CONTENDER 4E

LWNBRG CROSS OVER 66B
 RED TED SHOCO DATA 18W
 RED SSS CONTENDER 121B
 RED LWNBRG ROLLIN DEEP 104B

RED SSS BAR-NONE 313D
RED LWNBRG CROWSNEST 173F
 RED LWNBRG BELLE 89C

RED SSS BARON 695A
 RED SSS CASHMERE 558Z
 RED ANDRAS FUSION R236
 RED TED COMBINATION 129T

PERF DATA	
BW	88
WW	802
205D	744
365D	1092

EPDS	BW: +0.8	WW: +42	YW: +66	M: +26	MARB:	REA	CWT:
%	40	52	68	30	-	-	-

- An athletic bull with sound structure and a stylish profile
- Hails from a cow family that is as powerful, and sound footed as any you'll find this spring
- Maternal brother working at Handhills Colony
- Grandam 89C is CAA Premier with a wean ratio of 106 on 7 calves



MATERNAL BROTHER - MONOPOLY 175L



VISIT US ONLINE AT
WWW.LEEUWENBURGHANGUS.COM



T-K HIGH PRESSURE 148F



HIGH PRESSURE DAM- EU 69C

RED T-K HIGH PRESSURE 148F SIRE OF LOTS 54 TO 56

54



RED LWNBRG HIGH PRESSURE 3L

TED 3L • 2315681 • JANUARY 02 2023



RED T-K COBRA 34B
RED T-K HIGH PRESSURE 148F
RED T-K MISS RAMBO 69C

RED LWNBRG HARVESTOR 103C
RED LWNBRG CADENCE 31J
RED LWNBRG ROLLIN DEEP 85B

RED BAR-E-L WARDEN 144W
RED T-K RINA 87X
RED HAMCO PACKER 133Y
RED T-K MISS RAMBO 62A

TED HARVESTOR 154A
RED LWNBRG CADENCE 141Y
RED BIEBER ROLLIN DEEP Y118
RED TED OLES OSCAR 74Z

PERF DATA	
BW	87
WW	866
205D	813
365D	1241

EPDS	BW: +3.2	WW: +62	YW: +101	M: +27	MARB:	REA	CWT:
%	83	3	5	21	-	-	-

- A balanced beef bull with solid growth numbers and high end maternal merit
- Cow maker
- Dam is an ET daughter of donor 85B and has 6 sisters working in our herd
- High Pressure's dam is a donor cow working at Hawkeye Ranch with 30 registered progeny
- Expect high end udder quality to go along with real world production if you keep back this bulls daughters

55 RED LWNBRG HIGH PRESSURE 26L

TED 26L · 2315699 · January 11 2023

RED T-K COBRA 34B
RED T-K HIGH PRESSURE 148F
RED T-K MISS RAMBO 69C

RED BAR-E-L WARDEN 144W
RED T-K RINA 87X
RED HAMCO PACKER 133Y
RED T-K MISS RAMBO 62A

PERF DATA	
BW	90
WW	690
205D	685
365D	1122

RED U2 AUTHENTIC 414G
RED LWNBRG ANEXA 87J
RED TED FULL THROTTLE 52A

RED U-2 AUTHENTIC 139A
RED U-2 ANEXA 13A
RED 6 MILE FULL THROTTLE 171T
RED TED SAKIC 6W

EPDS	BW: +4.4	WW: +46	YW: +77	M: +23	MARB:	REA	CWT:
%	94	36	41	66	-	-	-

56 RED LWNBRG HIGH PRESSURE 121L

TED 121L · 2335709 · January 21 2023

RED T-K COBRA 34B
RED T-K HIGH PRESSURE 148F
RED T-K MISS RAMBO 69C

RED BAR-E-L WARDEN 144W
RED T-K RINA 87X
RED HAMCO PACKER 133Y
RED T-K MISS RAMBO 62A

PERF DATA	
BW	80
WW	813
205D	745
365D	1085

RED SHOCO DATA OSF MAF
RED TED SHOCO DATA 18W
RED TED COMBINATION 40R

RED SHOCO SIR ROBIN
RED VDAR BLACKANA 303
RED LSF COMBINATION A301M
RED TED LODI PRINCE 118N

EPDS	BW: +1.8	WW: +43	YW: +69	M: +25	MARB: +0.29	REA +0.21	CWT: +17
%	60	48	60	42	35	88	82



FULL BROTHER 129K



FULL BROTHER 76J



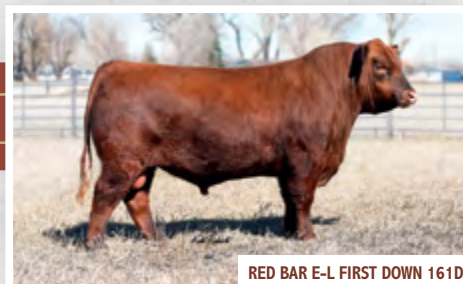
RED BAR-E-L FIRST DOWN 161D SIRE OF LOT 57

57 **RED LWNBRG FIRST DOWN 61L** TED 61L · 2315718 · January 15 2023

RED CROWFOOT 4ACES 2193Z	XO CROWFOOT 0102X
RED BAR-E-L FIRST DOWN 161D	RED CROWFOOT MISS STRTCH
RED BAR-E-L GLORIA 87R	RED BAR-E-L APPROVAL 4L
	RED BAR-E-L FIRST LADY 95J
RED WHEEL MONOPOLY 85C	RED TER-RON MONOPOLY 84A
RED LWNBRG BARBIE 11J	BLACK WHEEL BARBIE 66A
RED LWNBRG CROWSNEST 136F	RED SIX MILE CROWSNEST 313D
	RED LWNBRG PEACEMAKER 30B

PERF DATA	
BW	82
WW	820
205D	808
365D	1238

EPDS	BW: +1.5	WW: +49	YW: +88	M: +23	MARB:	REA	CWT:
%	54	25	19	66	-	-	-



RED BAR E-L FIRST DOWN 161D

- The only First Down son in the offering this year
- Very consistent in type, good rib shape and muscle, authentic angus character
- First Down females are at the top of the herd, easy keeping, fertile, with first class production
- Grandam 136F is a top ten cow in our herd with two daughters working here and a son at Dykshoorn's
- Same cow family as Instinct 100L and sale headliner POE 17L

RED U-2 MAMA'S BOY 167X SIRE OF LOT 58

58 **RED LWNBRG MAMA'S BOY 143L** TED 143L · 2335699 · January 25 2023

RED FLYING K AMBUSH 6T	RED SVR AMBUSH 59P
RED U-2 MAMA'S BOY 167X	RED FLYING K MANDY 120N
RED FLYING K LAKOTA 104U	RED U-2 BIG LEAGUE 544R
	RED FLYING K LAKOTA 68N
RED SSS ARSON 6U	RED SSS ARSENAL 271S
RED T-K RINA 87X	RED SSS GOLD EDGE 561K
RED JRA RINA 8T	RED BAR-X PATRIOT 18H
	RED SHODEREE RINA 205R

PERF DATA	
BW	95
WW	836
205D	779
365D	1208

EPDS	BW: +1.1	WW: +43	YW: +67	M: +26	MARB: -0.09	REA +0.54	CWT: +25
%	46	51	65	30	96	13	55



DUA 167X MAMA'S BOY

- A beauty of a cow bull that is a gentle as they come with good growth and very sound feet and legs
- Donor dam in T-K 87X, should produce hardworking moderate females with excellent phenotype

RED RREDS COMMON SENSE G933 SIRE OF LOT 59

59 **RED LWNBRG COMMON SENSE 86L** TED 86L · 2326870 · January 17 2023

RED RREDS SENECA 731C	RED BIEBER ROLLIN DEEP Y118
RED RREDS COMMON SENSE G933	RED RREDS ASTER 309A
RED PIE REBELLA 554	RED PIE CODE RED 9058
	RED RAISLAND REBELLA 314-606
RED LWNBRG FLEX 79B	RED MRLA FLEX 49Z
RED LWNBRG FLEX 51D	RED TED CHATEAU 6U
RED TED BARNEY 28X	RED TED BARNEY 41S
	RED TED KINCHEN SAGEBRUSH 163R

PERF DATA	
BW	83
WW	664
205D	601
365D	1124

EPDS	BW: +2.4	WW: +38	YW: +75	M: +21	MARB: +0.14	REA +0.40	CWT: +16
%	71	68	46	84	70	44	83



RREDS COMMON SENSE G933

- Moderate birth bull with plenty of shape and natural muscle
- Sound structured pedigree
- Udder quality from the maternal side
- Dam had a nagging injury most of the summer putting this guy at a disadvantage
- Caught right up to the rest of the pen for a Yearling index of 121 ranking him 4th

60



LWNBURG P.O.E. 4L

TED 4L • 2315682 • January 03 2023



RED SIX MILE JOHN WICK 882E
SIX MILE P.O.E. 234G
SIX MILE MS DARK STAR 161E

RED ANDRAS FUSION R236
RED LWNBURG FUSION 5D
RED TED CATALYST 20W

RED U-2 RECKONING 149A
RED SIX MILE & CO GLORIA 29A
PEAK DOT ELIMINATOR 100Z
SIX MILE MS DARK STAR 583A

ANDRAS IN FOCUS B175
RED ANDRAS BELLE B167
RED TED CATALYST 107T
RED TED HOB0 76H

PERF DATA

BW	74
WW	845
205D	722
365D	1092

EPDS	BW: -2.7	WW: +44	YW: +78	M: +23	MARB:	REA	CWT:
%	4	43	39	66	-	-	-

- Red carrier
- Calving ease option with good growth
- Soft sided, deep ribbed with plenty of frame
- Maternal sister sold to Wood Coulee and Cockburn Red Angus along with two sisters working in the herd
- Maternal brother Craftsman 18H sold to Rightcross Ranch in 2021



61



LWNBURG ADRENALINE 153L

TED 153L • 2315770 • January 26 2023

RED LWNBURG ELECTRIC 4D
RED LWNBURG ADRENALINE 28J
RED LWNBURG CROSS OVER 150D

RED WHEEL MONOPOLY 85C
LWNBURG BARBIE 81J
LWNBURG FIRST DOWN 29F

RED ANDRAS FUSION R236 AMF
CAF NHF OSF MAF
RED LWNBURG SCARLET 62Z
RED LWNBURG ROLLIN DEEP 90B
RED TED ROMEO 149S OSC

RED TER-RON MONOPOLY 84A
DMF AMF OSF
BLACK WHEEL BARBIE 66A
RED BAR-E-L FIRST DOWN 161D

PERF DATA

BW	72
WW	710
205D	738
365D	1238

EPDS	BW: +0.6	WW: +60	YW: +107	M: +26	MARB:	REA	CWT:
%	37	5	3	30	-	-	-

- A super cool red carrier, calving ease option that is very sound and has a great angus skull and is packed with muscle
- Excellent footed and athletic
- Proven maternal excellence built in on the cow side, stemming from great cowmakers like 161D and 66B



BLACK / RED CARRIERS

62



LWNBURG TRIGGS 178L

TED 178L • 2315790 • FEBRUARY 01 2023



BEAR CREEK JACKSON 74E
EASTONDALE TRIGGS 98J
EASTONDALE BETSY 118'17

RED GMRA PEACEMAKER 1216
LWNBURG PEACEMAKER 167C
TED BISMARCK 58Y

EASTONDALE JACKSON 63'15
BEAR CREEK 66S BLACKCAP 74A
HF REFLECTION 241C
EASTONDALE BETSY 108'03

RED FRITZ JUSTICE 8013
RED GMRA THELMA 930
S A V BISMARCK 5682
TED IN FOCUS 16W

PERF DATA	
BW	84
WW	800
205D	767
365D	1230

- A personal favourite from an early age, this stud really ties it all together
- Long and super stout with a cocky herd bull look, he's hard to miss
- Huge top and great rib shape, he will sire the easy keeping kind
- Cow family is very potent, anchored by CAA Premier dam 16W

EPDS	BW: -0.4	WW: +52	YW: +92	M: +24	MARB:	REA	CWT:
%	9	56	56	42			

63



LWNBURG TRIGGS 123L

TED 123L • 2315750 • January 21 2023

BEAR CREEK JACKSON 74E
EASTONDALE TRIGGS 98J
EASTONDALE BETSY 118'17

RED BRYLOR AUTOMATIC 95B
LWNBURG AUTOMATIC 162G
LWNBURG CROSSOVER 141D

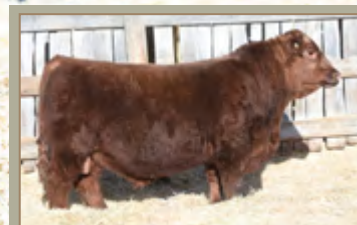
EASTONDALE JACKSON 63'15
BEAR CREEK 66S BLACKCAP 74A
HF REFLECTION 241C
EASTONDALE BETSY 108'03

RED WHEEL DODGE CITY 61Y
BLACK BRYLOR LAKME 155Y
LWNBURG CROSS OVER 66B
RED TED CHATEAU 6U

PERF DATA	
BW	91
WW	885
205D	827
365D	1283

EPDS	BW: +2.5	WW: +65	YW: +107	M: +21	MARB:	REA	CWT:
%	61	17	27	70	-	-	-

- Red carrier Triggs son that always catches your attention
- So much mass and dimension this guy is built exactly how power bulls should be, 10th ranked bull at weaning for a 110 WI and YI 105
- An athletic, high libido bull just like his sire
- Authentic angus skull and great hair coat
- Dam is long as a train, a wedge shaped beauty with excellent feet



MATERNAL BROTHER - BROXBURN 93K

BEAR CREEK JACKSON 74E
EASTONDALE TRIGGS 98J
EASTONDALE BETSY 118'17

RED LWNBURG PROLINE 55E
RED LWNBURG PROLINE 4G
RED LWNBURG CROSSOVER 193D

EASTONDALE JACKSON 63'15
BEAR CREEK 66S BLACKCAP 74A
HF REFLECTION 241C
EASTONDALE BETSY 108'03

RED LWNBURG HARVESTOR 103C
RED LWNBURG KODIAK 147C
LWNBURG CROSS OVER 66B
RED TED DETOUR 84A

PERF DATA

BW	88
WW	909
205D	823
365D	1248

EPDS	BW: +1.1	WW: +68	YW: +114	M: +22	MARB:	REA	CWT:
%	45	1	1	80			

- A standout in his calf crop with stellar phenotype and herd bull profile and presence
- A soggy, deep bodied bull built right from the ground up
- Top 1% of the breed in both weaning and yearling
- Dam is perfect uddered with awesome feet
- Maternal brother sold in last years sale to McIntyre Ranching
- Keep every female, they will be the low maintenance, high IQ kind that make money



DAM - HARVESTOR 12F

BEAR CREEK JACKSON 74E
EASTONDALE TRIGGS 98J
EASTONDALE BETSY 118'17

RED LWNBURG HARVESTOR 180C
LWNBURG HARVESTOR 12F
LWNBURG CROSSOVER 9D

EASTONDALE JACKSON 63'15
BEAR CREEK 66S BLACKCAP 74A
HF REFLECTION 241C
EASTONDALE BETSY 108'03

TED HARVESTOR 154A OSF MAF
RED LWNBURG IVY 9Z
LWNBURG CROSS OVER 66B
RED LWNBURG PEACEMAKER 77B

PERF DATA

BW	91
WW	812
205D	766
365D	1180

EPDS	BW: +1.1	WW: +54	YW: +89	M: +21	MARB:	REA	CWT:
%	29	49	62	70	-	-	-

- Well balanced cow bull with a deep bodied build and a cool look
- These Triggs cattle are very consistent in type and performance
- Authentic angus skulls and awesome hair
- Dam is an absolute beauty, wedge shaped and feminine, perfect udder and good footed, designated CAA Elite with a ratio of 106 on her calves



REF
SIRE **G**

EASTONDALE TRIGGS 98J

SIRE OF LOTS 66 TO 69

VK 98J • 2221514 • FEBRUARY 19 2021



TRIGGS VK 98J

EASTONDALE JACKSON 63'15
BEAR CREEK JACKSON 74E
BEAR CREEK 66S BLACKCAP 74A

CUDLOBE JACKSON 34Z DDF
EASTONDALE TOPSY 19'08
SSA 4336 DENSITY 26T
OTA BOYD NEW DAY 66S

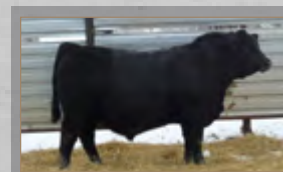
HF REFLECTION 241C
EASTONDALE BETSY 118'17
EASTONDALE BETSY 108'03

LLB REFLECTION 607A
HF TIBBIE 77Z OHF
B.B.A.R HERO 1267
EASTONDALE BETSY 43'99

PERF DATA

BW	92
WW	755
205D	743
365D	1267

EPDS	BW: +0.8	WW: +53	YW: +90	M: +19
%	24	10	19	30



TRIGGS VK 98J YEARLING

66



LWNBURG TRIGGS 154L

TED 154L • 2315771 • JANUARY 26 2023



BEAR CREEK JACKSON 74E
EASTONDALE TRIGGS 98J
EASTONDALE BETSY 118'17

74-51 SUDDEN LOOK 1023
PM MISS ESSENCE 124'20
GREENWOOD MISS ESSENCE

EASTONDALE JACKSON 63'15
BEAR CREEK 66S BLACKCAP 74A
HF REFLECTION 241C
EASTONDALE BETSY 108'03

B C LOOKOUT 7024
EXG LUCY P061 R3
S A V BRILLIANCE 8077 DMM MISS
ESSENCE 37T MAF

PERF DATA

BW	78
WW	850
205D	832
365D	1143

EPDS	BW: +0.1	WW: +55	YW: +81	M: +24	MARB:	REA	CWT:
%	14	45	76	42	-	-	-

- Calving ease Triggs son with great style and sound structure
- Extra length, good muscle, and rib shape
- These Triggs sons are athletic with early maturity and libido

67

LWNBURG TRIGGS 149L

TED 149L • 2315766 • January 25 2023

BEAR CREEK JACKSON 74E
EASTONDALE TRIGGS 98J
EASTONDALE BETSY 118'17

EASTONDALE JACKSON 63'15
BEAR CREEK 66S BLACKCAP 74A
HF REFLECTION 241C
EASTONDALE BETSY 108'03

PERF DATA	
BW	88
WW	924
205D	898
365D	1329

ANCHORAGE TRENDSEEKER 8011
SIX MILE DIANA 165H
SIX MILE DIANA 403F

BROOKING TRENDSPOTTER 6166
EXAR MISS BEAUTY 4023
U2 PREMIUM CUT 38D
SIX MILE DIANA 144D

EPDS	BW: +2.5	WW: +66	YW: +108	M: +22	MARB:	REA	CWT:
%	61	15	26	61	-	-	-

- One of the best cow bulls in the offering
- Super stout, with good bone and great natural muscle
- Standout from birth, with built performance
- 2nd ranked bull at weaning for 120 index



68

LWNBURG TRIGGS 171L

TED 171L • 2315784 • January 30 2023

BEAR CREEK JACKSON 74E
EASTONDALE TRIGGS 98J
EASTONDALE BETSY 118'17

EASTONDALE JACKSON 63'15
BEAR CREEK 66S BLACKCAP 74A
HF REFLECTION 241C
EASTONDALE BETSY 108'03

PERF DATA	
BW	75
WW	735
205D	715
365D	1091

MRLA RELOAD 56C
LWNBURG BISMARCK 119G
TED BISMARCK 50Y

S A V RESOURCE 1441
RED MRLA MISS 641Y
S A V BISMARCK 5682
TED COMMANDER 26W

EPDS	BW: -1.0	WW: +42	YW: +71	M: +20
%	5	85	89	78



GRAND DAM-BISMARCK 50Y



69

LWNBURG TRIGGS 197L

TED 197L • 2315802 • February 09 2023

BEAR CREEK JACKSON 74E
EASTONDALE TRIGGS 98J
EASTONDALE BETSY 118'17

EASTONDALE JACKSON 63'15
BEAR CREEK 66S BLACKCAP 74A
HF REFLECTION 241C
EASTONDALE BETSY 108'03

PERF DATA	
BW	91
WW	705
205D	737
365D	1187

REMITALL F DESIRE 64D
PM MISS MAYFLOWER 279'20
PM MISS MAYFLOWER 59'16

S A V PIONEER 7301
REMITALL F ELLEN 62B
PEAK DOT PIONEER 124B
PM MISS MAYFLOWER 146'14

EPDS	BW: +2.0	WW: +48	YW: +86	M: +22	MARB:	REA	CWT:
%	49	70	68	61	-	-	-



REF
SIRE

G

SAV PRESIDENT 6847

SIRE OF LOTS 70 TO 76

IMP 6847D • 2022643 • JANUARY 10 2016



SAV PRESIDENT 6847



NESSET LAKE ERICA 91S

O C C PAXTON 730P D
COLEMAN CHARLO 0256
BOHI ABIGALE 6014

S A V 8180 TRAVELER 004
S A V BLACKCAP MAY 4136
S A V MAY 2397

O C C FOCUS 813F
O C C BLACKBIRD 736K
SITZ TRAVELER 8180
S A V ABIGALE 6062 OHF

SITZ TRAVELER 8180 BOYD
FOREVER LADY 8003
S A F 598 BANDO 5175
S A V MAY 7238 CAF DDF

PERF DATA

BW	84
WW	1215
205D	-
365D	-

EPDS	BW: +3.4	WW: +73	YW: +121	M: +24	MARB: -0.04	REA +0.86	CWT: +34
%	79	6	11	42	98	6	75

SAV PRESIDENT 6847 x NESSET LAKE ERICA 91S SONS

COLEMAN CHARLO 0256
S A V PRESIDENT 6847
S A V BLACKCAP MAY 4136 CAF

MINBURN MAIN EVENT 126P
NESSET LAKE ERICA 91S
NESSET LAKE ERICA IDM 111M

O C C PAXTON 730P
BOHI ABIGALE 6014
S A V 8180 TRAVELER 004
S A V MAY 2397

CRESCENT CREEK MAIN EVENT 6H
MINBURN BLACKBIRD 163K
NESSET LAKE SCOTCHCAP IDM 58K
NESSET LAKE ERICA IDM 42K

- 7 ET flush mates from SAV President 6847 and Nessel Lake Erica 91S
- Consistent in type, with breed leading growth and performance
- Long spined, deep ribbed beef bulls that will take a herd to the next level
- Proven genetics, from a foundation type 15 year old Main Event 126P donor cow
- A high capacity, easy fleshing cow with udder quality and great feet
- Keep every female with confidence and take advantage of a cow family that has proven donor cows and CAA Elite dams stacked up four generations deep



70

LWNBURG PRESIDENT 75L

TED 75L • 2335689 • January 16 2023

PERF	BW	WW	205D	365D
	97	895	805	1294
EPDS	BW: +3.9	WW: +57	YW: +98	M: +22
%	87	39	46	70



71

LWNBURG PRESIDENT 91L

TED 91L • 2335675 • January 18 2023

PERF	BW	WW	205D	365D
	79	764	692	1103
EPDS	BW: +3.9	WW: +57	YW: +98	M: +22
%	87	39	46	70



72 LX LWNBURG PRESIDENT 97L

TED 97L • 2335674 • January 18 2023

PERF	BW	WW	205D	365D
	78	718	651	1149
EPDS	BW: +3.9	WW: +57	YW: +98	M: +22
%	87	39	46	70



73 LX LWNBURG PRESIDENT 103L

TED 103L • 2335668 • January 19 2023

PERF	BW	WW	205D	365D
	85	730	665	1062
EPDS	BW: +3.9	WW: +57	YW: +98	M: +22
%	87	39	46	70



74 LX LWNBRG PRESIDENT 39L

TED 39L · 2335694 · January 12 2023

PERF	BW	WW	205D	365D
	82	841	744	1219
EPDS	BW: +3.9	WW: +57	YW: +98	M: +22
%	87	39	46	70



75 LX LWNBRG PRESIDENT 109L

TED 109L · 2335669 · January 19 2023

PERF	Bw	WW	205D	365D
	93	660	603	1403
EPDS	BW: +3.9	WW: +57	YW: +98	M: +22
%	87	39	46	70

76 LX LWNBRG PRESIDENT 34L

TED 34L · 2335695 · January 12 2023

PERF	BW	WW	205D	365D
	100	903	800	1120
EPDS	BW: +3.9	WW: +57	YW: +98	M: +22
%	87	39	46	70



VISIT US ONLINE AT
WWW.CATTLEVIDS.CA

REF
SIRE

H

DEER VALLEY GROWTH FUND

SIRE OF LOT 77



BLACK ANGUS



DEER VALLEY GROWTH FUND

IMP 7112E • 2077827 • JANUARY 22 2017

BASIN PAYWEIGHT 006S
BASIN PAYWEIGHT 1682
21AR O LASS 7017VERMILION PAYWEIGHT J847
BASIN LUCY 3829 AMF NHF
HARB PENDLETON 765 J H
21AR O LASS F24APLATTEMERE WEIGH UP K360
DEER VALLEY RITA 36113
DEER VALLEY RITA 9457SITZ UPWARD 307R
BARBARA OF PLATTEMERE 337
G A R NEW DESIGN 5050
G A R EXT 614 AMF

PERF DATA

BW	70
WW	815
205D	
365D	

EPDS	BW: +3.4	WW: +73	YW: +121	M: +24	MARB: -0.04	REA +0.86	CWT: +34
%	33	1	1	5	44	11	1



77



LWNBGRG GROWTH FUND 54L

TED 54L • 2335680 • January 14 2023

BASIN PAYWEIGHT 1682
DEER VALLEY GROWTH FUND
DEER VALLEY RITA 36113BASIN PAYWEIGHT 006S
21AR O LASS 7017
PLATTEMERE WEIGH UP K360
DEER VALLEY RITA 9457MINBURN MAIN EVENT 126P
NESSET LAKE ERICA 91S
NESSET LAKE ERICA IDM 111MCRESCENT CREEK MAIN EVENT 6H
MINBURN BLACKBIRD 163K
NESSET LAKE SCOTCHCAP IDM 58K
NESSET LAKE ERICA IDM 42K

PERF DATA

BW	83
WW	855
205D	762
365D	1192

EPDS	BW: +2.9	WW: +65	YW: +120	M: +25	MARB:	REA	CWT:
%	69	17	12	41	-	-	-

- A larger framed cow bull that will add pounds
- A standout since birth he moves around the pen like he owns it
- Sound structured with good length, rib shape and packed with red meat
- His full sibs in the replacement pen are absolute stunners with a real broody look and possess the same extra rib and length he does

HEIFER CALVES



EPDS	BW: +3.3	WW: +48	YW: +85	M: +24	MARB:	REA	CWT:
%	84	28	24	54	-	-	-

78

RED LWNBRG BELLE 7L

TED 7L • 2315684 • January 06 2023

RED CROWFOOT 4ACES 2193Z
RED BAR-E-L FIRST DOWN 161D
RED BAR-E-L GLORIA 87R

XO CROWFOOT 0102X
RED CROWFOOT MISS STRTCH
RED BAR-E-L APPROVAL 4L
RED BAR-E-L FIRST LADY 95J

RED U2 BLUE COLLAR 295E
RED LWNBRG ANEXA 176J
RED LWNBRG FUSION 7D

RED U-2 RECKONING 149A
RED U-2 ANEXA 439A
RED ANDRAS FUSION R236
RED LWNBRG ROLLIN DEEP 36B

PERF DATA	
BW	88
WW	681
205D	652
365D	889

- A typical First Down daughter with an attractive pattern and balance
- First Down cows just flat out work, with high maternal IQ, no nonsense fleshing ability and fertility
- 3 CAA Elite cows stacked up in the maternal side of her pedigree
- Real world genetics at their finest here



EPDS	BW: +0.1	WW: +51	YW: +88	M: +31
%	36	20	20	4

79

RED LWNBRG MISS PEACEMAKER 68L

TED 68L • 2315721 • January 16 2023

RED DWAJO SUNDANCE 114A
RED TOPHAM MCLOVIN 757E
RED TOPHAM MS MADONA 977W

RED T-K RECOIL 72Y
RED DWAJO LUCY 21T
RED FLYING K PATRICK 85S
RED TOPHAM MS MADONA 754T

RED ANDRAS FUSION R236
RED LWNBRG FUSION 8E
RED LWNBRG PEACEMAKER 92B

ANDRAS IN FOCUS B175
RED ANDRAS BELLE B167
RED GMRA PEACEMAKER 1216
RED TED NEW TREND 108P

PERF DATA	
BW	74
WW	670
205D	629
365D	895



- A super deep, soft sided Mclovin daughter with some jam
- Loads of hair, good length and natural thickness
- Built just like her mama, this soggy made girl is designed to thrive in the harshest environments
- Expect high end udder quality and great maternal instincts
- Two maternal sisters working in our herd and grandam 92B is a donor cow for us and the dam to Fireside 77G, herd sire at Lonestone Farms



EPDS	BW: +1.8	WW: +43	YW: +69	M: +25	MARB: +0.29	REA +0.21	CWT: +17
%	60	48	60	42	35	88	82

80

RED LWNBRG MISS SHOCO DATA 82L

TED 82L • 2335686 • January 17 2023

RED T-K COBRA 34B
RED T-K HIGH PRESSURE 148F
RED T-K MISS RAMBO 69C

RED BAR-E-L WARDEN 144W
RED T-K RINA 87X
RED HAMCO PACKER 133Y
RED T-K MISS RAMBO 62A

RED SHOCO DATA
RED TED SHOCO DATA 18W
RED TED COMBINATION 40R

RED SHOCO SIR ROBIN
RED VDAR BLACKANA 303
RED LSF COMBINATION A301M
RED TED LODI PRINCE 118N

PERF DATA	
BW	73
WW	730
205D	659
365D	870

- An ET daughter of CAA Elite donor 18W, who has put 7 natural sons through our sale and still raised her own calf last year at 14 years of age
- Cow power, longevity and serious production potential built into this girl
- No frills genetics that most likely won't win any banners but will produce consistently and pay the bills

Somewhat of a new venture here, we've decided to sell a handful of heifer calves from cow families or donor cows that have proven production in our program. We've selected these females from bulls that have and are still influencing our cowherd and we are confident in their maternal capabilities.



EPDS	BW: +1.5	WW: +51	YW: +88	M: +31	MARB: +0.40	REA +0.42	CWT: +37
%	54	19	19	3	16	38	16

81



RED LWNBRG OSCARA 117L

TED 117L · 2335664 · January 20 2023

RED DWAJO SUNDANCE 114A
RED TOPHAM MCLOVIN 757E
 RED TOPHAM MS MADONA 977W

RED T-K RECOIL 72Y
 RED DWAJO LUCY 21T
 RED FLYING K PATRICK 85S
 RED TOPHAM MS MADONA 754T

RED BIEBER ROLLIN DEEP Y118
RED LWNBRG ROLLIN DEEP 85B
 RED TED OLES OSCAR 74Z

RED BIEBER ROOSEVELT W384
 RED BIEBER TILLY 399W
 RED CROWFOOT OLE'S OSCAR 2042M
 RED TED SHOCO DATA 18W

PERF DATA	
BW	82
WW	648
205D	593
365D	854

- An ET daughter CAA Elite cow 85B
- 6 maternal sisters working in our herd
- Maternal brother Fallout 100G working at Cooksley's in Nebraska
- Hard working cow family that brings home payweight consistently



EPDS	BW: +4.2	WW: +57	YW: +99	M: +27	MARB:	REA	CWT:
%	93	7	6	21	-	-	-

82



RED LWNBRG MISS ICON 137L

TED 137L · 2315759 · January 24 2023

RED LWNBRG ELECTRIC 4D
RED LWNBRG ADRENALINE 28J
 RED LWNBRG CROSS OVER 150D

RED ANDRAS FUSION R236
 RED LWNBRG SCARLET 62Z
 RED LWNBRG ROLLIN DEEP 90B
 RED TED ROMEO 149S

RED LWNBRG HARVESTOR 41E
RED LWNBRG ESSENCE 189J
 RED LWNBRG ICON 73F

TED HARVESTOR 154A
 RED TED KARWEIK 74T
 RED COUNT RIDGE ICON 1D
 RED TED LARAMIE 4Z

PERF DATA	
BW	90
WW	635
205D	651
365D	902

- Sweet heifer calf with such a natural cool look
- Her sire Adrenaline 28J was our high selling bull to Dersta's, Faulk's and Matejka's
- Moderate, with good rib shape and added length she has the same look as 28J's mama
- No nonsense cow family, that weans a high percentage of their body weight
- Maternal brother was a highlight in last years sale to Dave Slingerland and another to Lost River Ranches



EPDS	BW: +2.4	WW: +59	YW: +98	M: +26	MARB:	REA	CWT:
%	71	5	7	30	-	-	-

83



RED LWNBRG MS NETWORK 140L

TED 140L · 2315761 · January 24 2023

RED U2 DOMINION AMF NHF
RED LWNBRG SLOWBURN 102H
 RED U2 FAVORITE 275F

RED HOWE HESSTON 212C O
 RED U2 HIDE HO 459D
 RED U-2 RENOWN 193C
 RED KBJ FAVORITE 931B

RED TOPHAM MCLOVIN 757E
RED LWNBRG MS MADONA 153H
 TED NETWORK 68A

RED DWAJO SUNDANCE 114A
 RED TOPHAM MS MADONA 977W
 S A V NET WORTH 4200
 RED TED CATALYST 20W

PERF DATA	
BW	80
WW	705
205D	685
365D	916

- A beautiful well constructed female, with class and style
- She is stout and moderate and blends together a really cool look with cow power
- Outcross cow family different from most in the breed
- Her sire is as red hot as any in the breed and her cow family features the
- predictable cow maker SAV Network 4200 and Mclovin 757E, who is really leaving a mark here on the cowherd
- As is evident through the bull sale catalogue the Slowburn/McLovin mating really clicked
- Mclovin really stamps his females, dark red, deep sided, moderate, easy keeping females that have high fertility and outstanding udder quality
- Dam is cherry red, a heavy milking mama that has calved her second set of twins in three years

BOLT EPD'S

If a Lot# is missing in this list it means the CAA does not have BOLT EPD on file for this animal at this time.

GENETIC EVALUATION BY THE RED ANGUS ASSOCIATION OF AMERICA

CURRENT AS OF JANUARY 11, 2024		BW	WW	YW	MILK	MARB	CW	REA
IMP 6847D	S A V PRESIDENT 6847	1.3	93	148	24	0.21	45	0.58
IMP 7112E	DEER VALLEY GROWTH FUND	-0.9	112	195	33	0.37	93	0.45
TOP 757E	RED TOPHAM MCLOVIN 757E	0.4	66	101	31	0.17	21	0.12
TED 18H	RED LWNBRG CRAFTSMAN 18H	-1	64	102	26	0.34	18	-0.03
TED 68H	RED LWNBRG BRXTN 68H	-1.5	74	110	26	0.41	34	0.16
TED 140J	RED LWNBRG CARTEL 140J	-0.4	65	109	17	0.35	30	0.14
TED 28J	RED LWNBRG ADRENALINE 28J	-0.5	64	103	24	0.34	17	0.04
VK 98J	EASTONDALE TRIGGS 98J	-0.8	59	92	20	0.42	39	0.27
TED 100L	RED LWNBRG ADRENALINE 100L	-0.4	79	124	31	0.37	33	0.22
TED 102L	RED LWNBRG CARTEL 102L	1.8	76	117	19	0.27	27	0.25
TED 108L	RED LWNBRG SLOWBURN 108L	-0.3	81	123	25	0.2	34	0.37
TED 121L	RED LWNBRG HIGH PRESSURE 121L	0.2	64	93	27	0.38	19	0.08
TED 127L	RED LWNBRG SLOWBURN 127L	0.9	73	113	26	0.21	33	0.35
TED 12L	RED LWNBRG SLOWBURN 12L	2.1	71	110	27	0.24	23	0.25
TED 135L	RED LWNBRG BRXTN 135L	0.6	63	98	24	0.4	20	0.02
TED 13L	RED LWNBRG SLOWBURN 13L	2.1	71	110	27	0.24	23	0.25
TED 142L	RED LWNBRG RIDGELINE 142L	-0.8	71	113	22	0.29	25	0.36
TED 143L	RED LWNBRG MAMA'S BOY 143L	-0.8	52	76	30	0.05	6	0.2
TED 152L	RED LWNBRG RIDGELINE 152L	-1.2	66	101	20	0.13	26	0.29
TED 153L	LWNBRG ADRENALINE 153L	-2.4	61	101	22	0.31	23	0.1
TED 156L	RED LWNBRG CARTEL 156L	-1.7	56	95	17	0.3	20	0.05
TED 157L	RED LWNBRG SLOWBURN 157L	0.4	64	103	22	0.3	27	0.18
TED 160L	RED LWNBRG ADRENALINE 160L	-1.7	63	94	28	0.29	16	0.1
TED 167L	RED LWNBRG SLOWBURN 167L	-0.3	65	99	25	0.25	23	0.13
TED 168L	RED LWNBRG DOMINION 168L	3.3	77	128	24	0.34	42	0.24
TED 176L	RED LWNBRG SLOWBURN 176L	0.1	72	113	24	0.39	31	0.22
TED 177L	RED LWNBRG MCLOVIN 177L	-0.6	66	105	28	0.35	21	0.16
TED 17L	LWNBRG P.O.E. 17L	-3.3	67	105	29	0.21	29	0.27
TED 181L	RED LWNBRG MCLOVIN 181L	-0.2	61	97	28	0.36	21	-0.04
TED 18L	RED LWNBRG CARTEL 18L	0.7	70	114	24	0.35	33	0.15
TED 190L	RED LWNBRG ADRENALINE 190L	-3.6	56	88	20	0.31	19	-0.09
TED 19L	RED LWNBRG CARTEL 19L	0.7	70	114	24	0.35	33	0.15
TED 1L	RED LWNBRG BRXTN 1L	-1.6	67	98	26	0.41	22	0.11
TED 209L	RED LWNBRG RIDGELINE 209L	-1.1	62	96	24	0.25	20	0.19
TED 20L	RED LWNBRG CRAFTSMAN 20L	-1.5	56	87	27	0.28	16	-0.02
TED 213L	RED LWNBRG SLOWBURN 213L	0.4	75	120	22	0.33	37	0.2
TED 216L	RED LWNBRG ADRENALINE 216L	0.9	60	100	20	0.34	19	-0.04
TED 22L	RED LWNBRG SHOCO 22L	-1.1	63	98	31	0.3	21	0.15
TED 233L	RED LWNBRG CARTEL 233L	1.8	69	114	20	0.3	29	0.1
TED 239L	RED LWNBRG ADRENALINE 239L	1.2	59	92	20	0.29	13	0.01
TED 23L	RED LWNBRG ELECTRIC 23L	-2.8	69	111	25	0.26	24	0.14
TED 26L	RED LWNBRG HIGH PRESSURE 26L	1.1	62	90	26	0.23	12	0.03
TED 27L	RED LWNBRG FIRESIDE 27L	-2.9	62	100	27	0.4	21	0.12
TED 29L	RED LWNBRG BROXBURN 29L	-1.1	69	101	25	0.39	27	0.15
TED 30L	RED LWNBRG MCLOVIN 30L	-2.4	60	96	24	0.2	23	0.11
TED 31L	RED LWNBRG ADRENALINE 31L	1.6	74	114	27	0.33	24	0.12
TED 33L	RED LWNBRG HOT WIRE 33L	-2.2	67	105	26	0.36	24	0.12
TED 36L	RED LWNBRG SLOWBURN 36L	0.8	81	125	28	0.29	33	0.36
TED 37L	RED LWNBRG MCLOVIN 37L	1.2	73	117	25	0.32	32	0.04
TED 3L	RED LWNBRG HIGH PRESSURE 3L	0.4	76	114	30	0.34	28	0.13
TED 4L	LWNBRG P.O.E. 4L	-5.1	55	90	24	0.4	25	0.1
TED 57L	RED LWNBRG SLOWBURN 57L	0.4	80	126	21	0.28	37	0.34
TED 59L	RED LWNBRG SLOWBURN 59L	-0.3	73	115	25	0.23	33	0.29
TED 61L	RED LWNBRG FIRST DOWN 61L	-1	66	107	22	0.23	22	0.18
TED 62L	RED LWNBRG ADRENALINE 62L	-1.8	59	96	24	0.37	15	0.1
TED 63L	RED LWNBRG ADRENALINE 63L	-2.5	57	88	23	0.29	15	0.01
TED 66L	RED LWNBRG ADRENALINE 66L	1.1	70	111	24	0.32	21	0.14
TED 69L	RED LWNBRG CRAFTSMAN 69L	-0.9	71	110	24	0.32	19	0.05
TED 71L	RED LWNBRG MCLOVIN 71L	0	68	108	30	0.37	24	0.17
TED 74L	RED LWNBRG MCLOVIN 74L	-0.9	63	95	26	0.18	22	0.06
TED 83L	RED LWNBRG RIDGELINE 83L	-0.5	74	115	23	0.14	31	0.39
TED 86L	RED LWNBRG COMMON SENSE 86L	-2.1	54	86	21	0.2	12	0.08
TED 87L	RED LWNBRG SLOWBURN 87L	0.6	70	111	21	0.29	31	0.16
TED 88L	RED LWNBRG MCLOVIN 88L	0.3	59	87	29	0.26	9	0.07
TED 93L	RED LWNBRG MCLOVIN 93L	2.2	80	124	30	0.2	31	0.32
TED 94L	RED LWNBRG ADRENALINE 94L	-3.4	53	89	22	0.29	18	0.06

CANADIAN AngusONE EVALUATION

Please note that the EPDs listed in this sale catalogue are the product of the new Canadian AngusONE Genetic Evaluation. These EPDs are calculated by Angus Genetics Inc in partnership with the American Angus Association. Therefore, EPDs for Canadian Red Angus, Canadian Black Angus, and American Black Angus animals are directly comparable to each other. This is a completely new base for Canadian Red Angus however, therefore, please be advised that the EPDs are not comparable to last year's EPDs for Red Angus. These EPDs are on a completely different scale, so please familiarize your selves with the new Breed Average and with the new threshold number for traits of importance to you. The right EPD for you will depend on your cow herd, your management, and your breeding goals. For more information on using EPDs please contact your Association, the Canadian Angus Association, at 1-888-571-3580, and for more information about the genetics offered in this catalogue and what might best suit your breeding needs please contact the seller.

EPD: Expected Progeny Difference is the prediction of how progeny of each animal are expected to perform relative to the progeny of other animals in the Angus breed. As data continues to accumulate, accuracy levels rise and EPD's can shift accordingly.

BW: Birth weight is related to calving ease. Lower birth weights tend to reduce the incidence of calving difficulties. Lower birth weight EPD is more desirable for heifers.

WW: Weaning Weight is an indicator of growth from birth to weaning(205 days of age). During this period, the calf's growth is influenced by it's mother's ability to produce milk and it's own ability to grow.

YW: Yearling Weight is an indicator of growth from birth to yearling (365 days of age). The calf's growth during this period is influenced by its own ability to grow plus its mother's maternal abilities. It is the best estimate for total growth.

MILK: Milk EPD reflects the milking ability of a sire's daughters expressed in pounds of calf weaned.

CARCASS EPD

MARB:(%IMF) Marbling EPD is a predictor of the level of intramuscular fat and is derived using CUP ultrasound data and actual carcass data. Marbling determines quality grade.

REA: (Ribeye Area) Ribeye area is expressed in inches² and is a predictor of the area of ribeye muscle at the 12th/13th rib.

CWT: Is a predictor of transmitting ability for hot carcass weight.

AVERAGE EPD'S FOR ALL RED CALVES BORN IN 2023

BW	WW	YW	M	MARB	REA	CWT
1.2	43	74	25	0.23	0.53	43

AVERAGE EPD'S FOR ALL BLACK CALVES BORN IN 2023

BW	WW	YW	M	MARB	REA	CWT
2.0	54	95	23	0.49	0.53	26



REAL • FUNCTIONAL • CATTLE



SCAN TO VISIT OUR SITE

Catalogue Design by
Coyote Publishing
www.coyotepublishing.ca



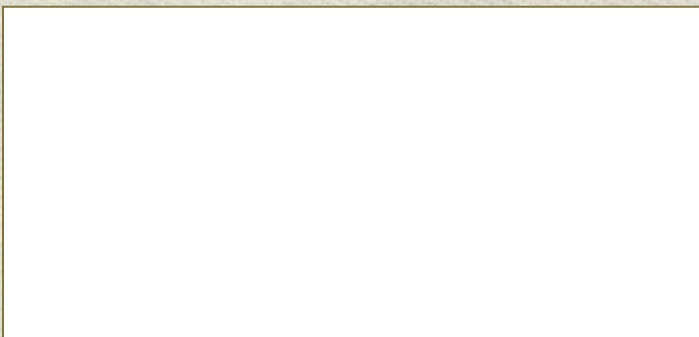
LEEUWENBURGH ANGUS
BOX 25
LETHBRIDGE AB T1J 3Y3



33rd Annual
BULL SALE
MARCH 12 • 2024

BALOG AUCTION . LETHBRIDGE, AB . 1:00PM

PLEASE BRING THIS CATALOG TO THE SALE



LEEUWENBURGHANGUS.COM